



# Attachment P

## Roadway Improvements – Full Build

**26841.01: Sands Integrated Resort  
Traffic Impact Study Attachments  
Attachment P – Roadway Improvements – Full Build**

---



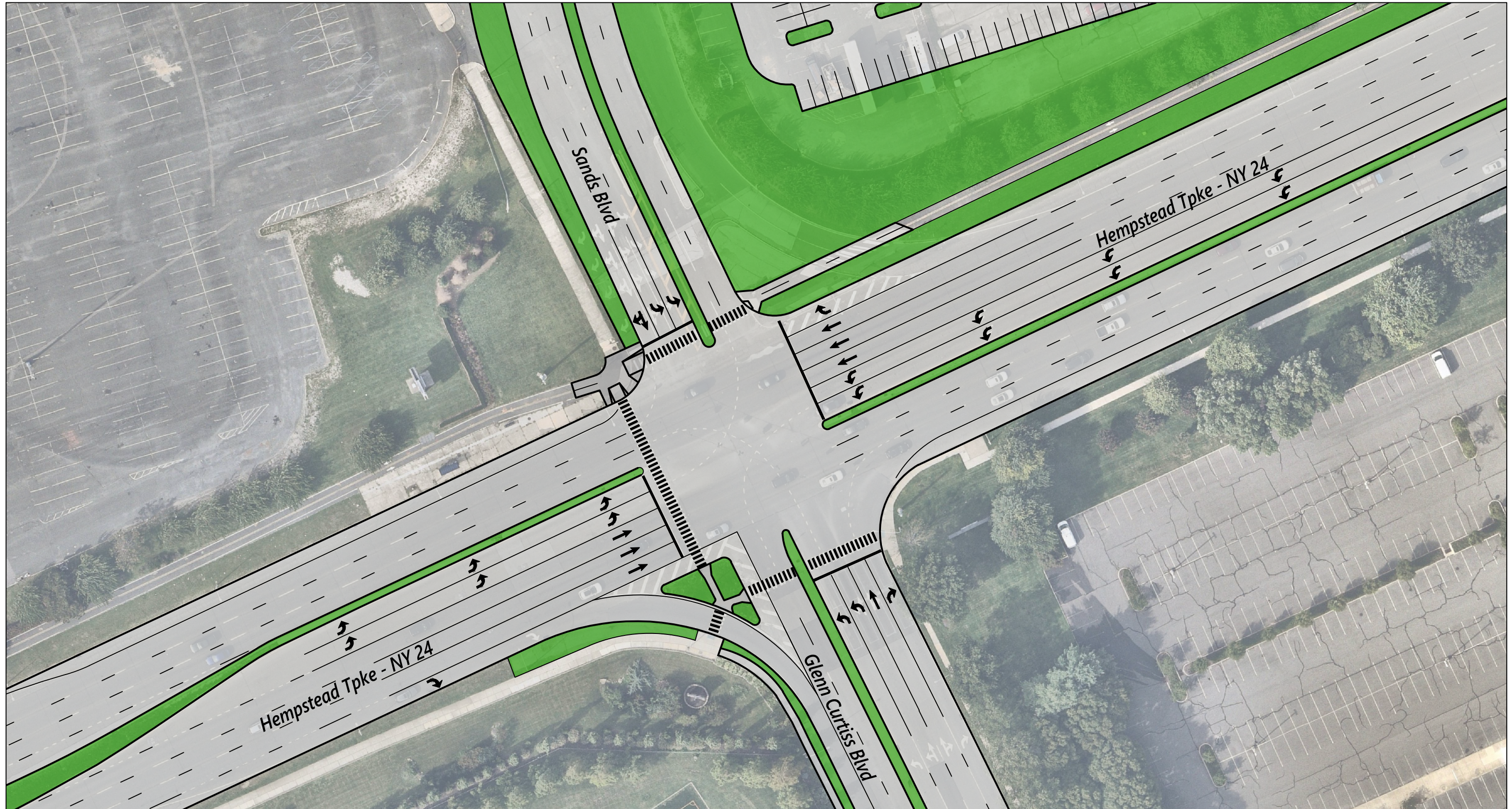


**Figure A: Intersection 2**

Sands New York Integrated Resort

Hempstead Turnpike (NY 24) at Glenn Curtiss Boulevard & Sands Blvd, Town of Hempstead, Nassau County

ISSUED | 6/13/2024



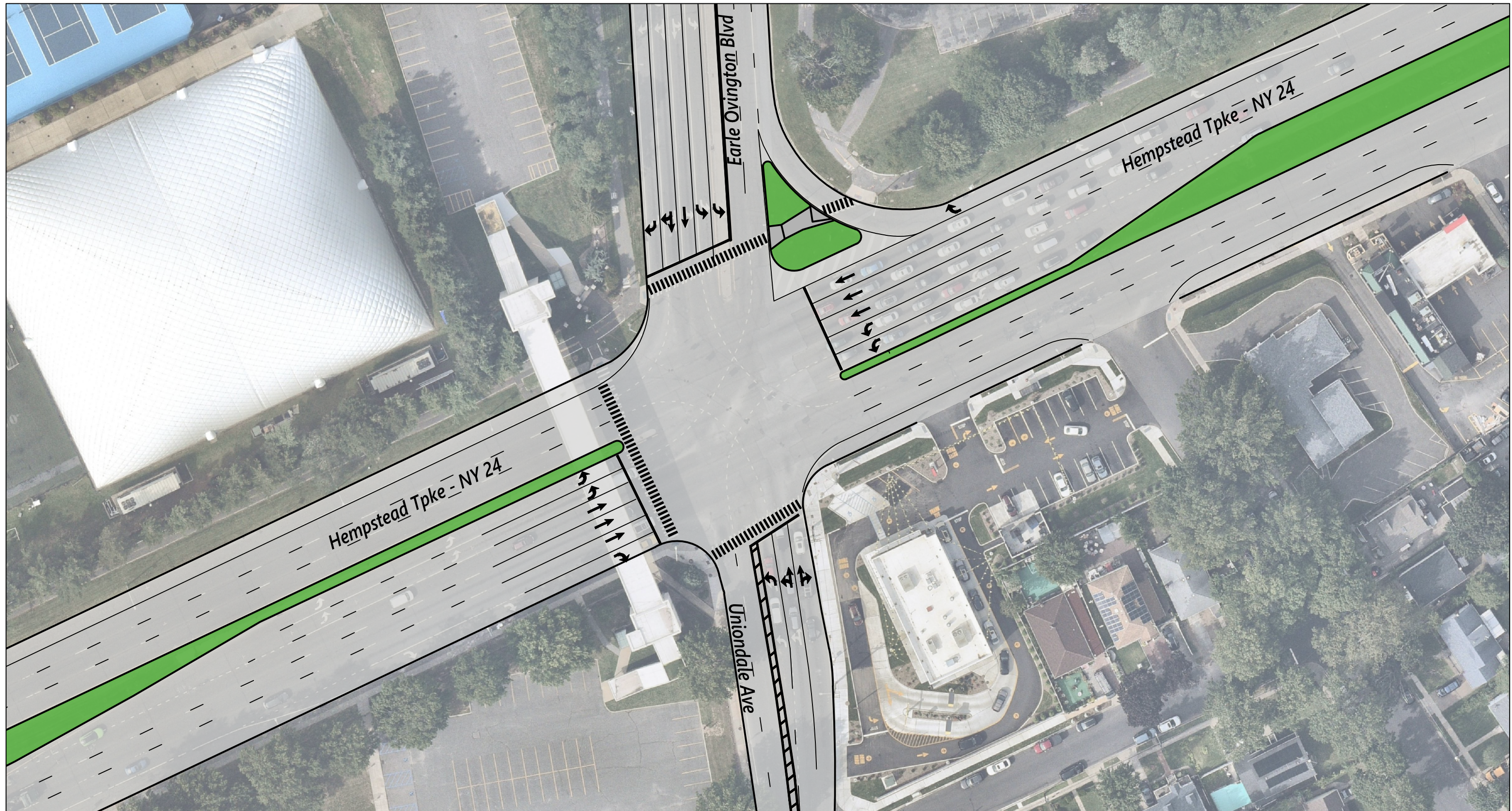
Basemap Source: Nearmap



**Figure B: Intersection 5**

Sands New York Integrated Resort

Hempstead Turnpike (NY 24) at Earle Ovington Boulevard/Uniondale Avenue, Town of Hempstead, Nassau County



Basemap Source: Nearmap

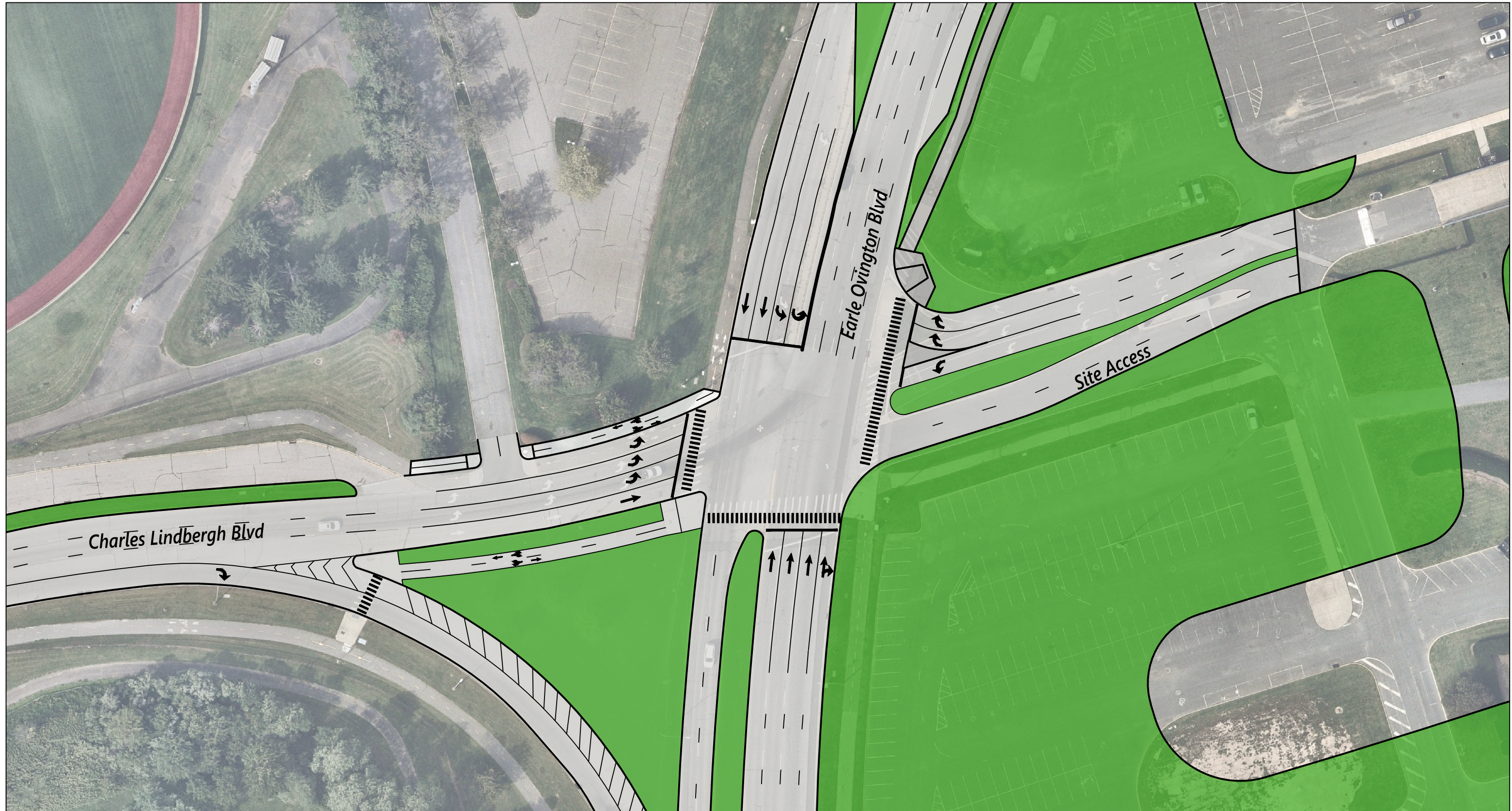


**Figure C: Intersection 7**

Sands New York Integrated Resort

Earle Ovington Boulevard at Charles Lindbergh Boulevard/Site Access, Town of Hempstead, Nassau County

ISSUED | 6/13/2024





**Figure D: Intersection 8**

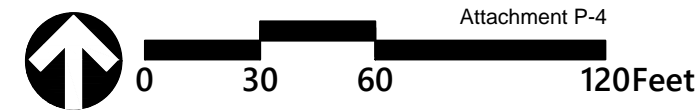
Sands New York Integrated Resort

Charles Lindbergh Boulevard at Earle Ovington Boulevard & Site Access, Town of Hempstead, Nassau County

ISSUED |6/13/2024



Basemap Source: Nearmap





**Figure E: New Signal at Intersection 360**

Sands New York Integrated Resort

Charles Lindbergh Boulevard at Sands Blvd/Main Entrance, Town of Hempstead, Nassau County

ISSUED | 6/13/2024



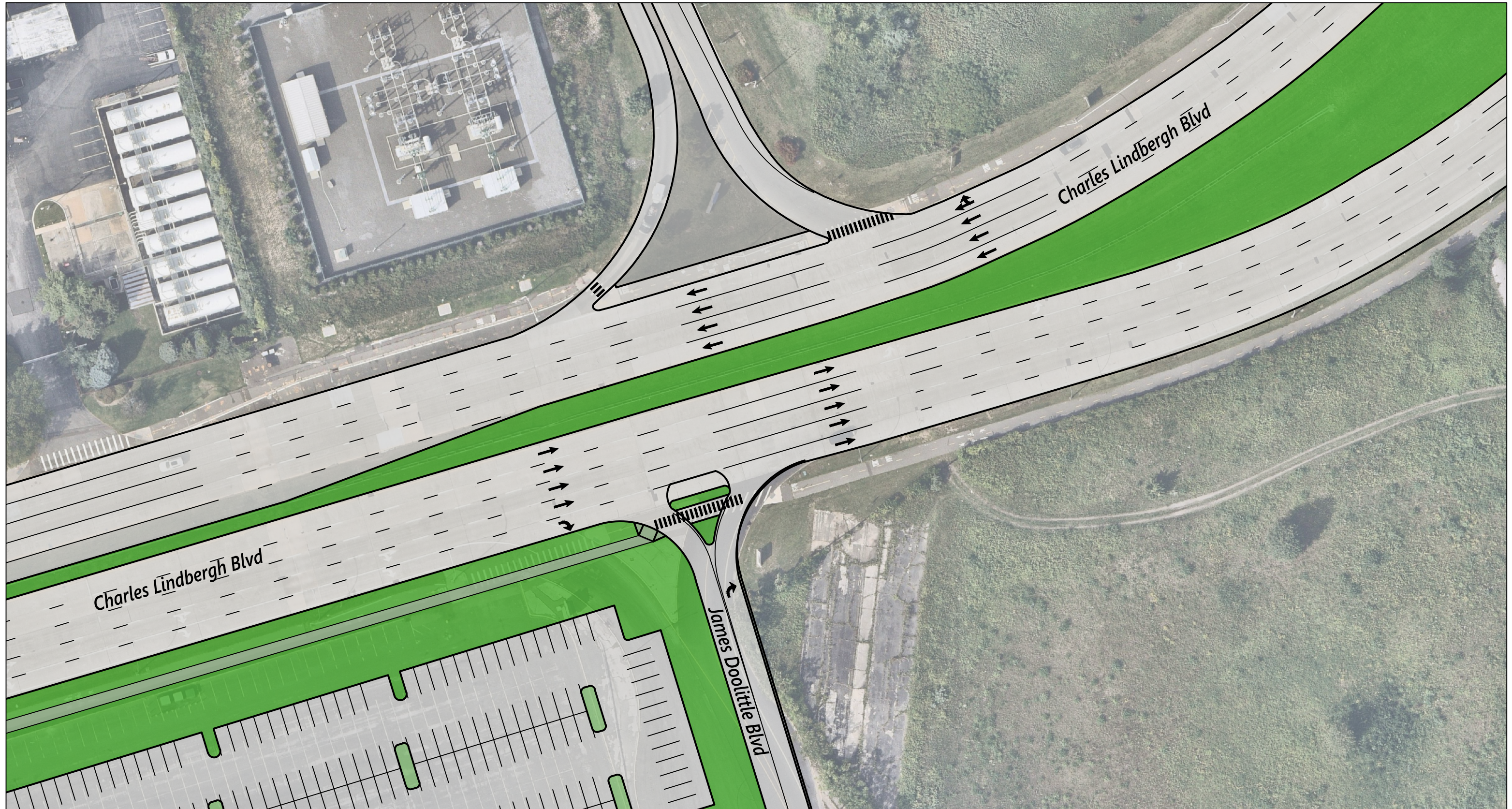


**Figure F: Intersection 9**

Sands New York Integrated Resort

Charles Lindbergh Boulevard at James Doolittle Boulevard, Town of Hempstead, Nassau County

ISSUED | 6/13/2024



Basemap Source: Nearmap

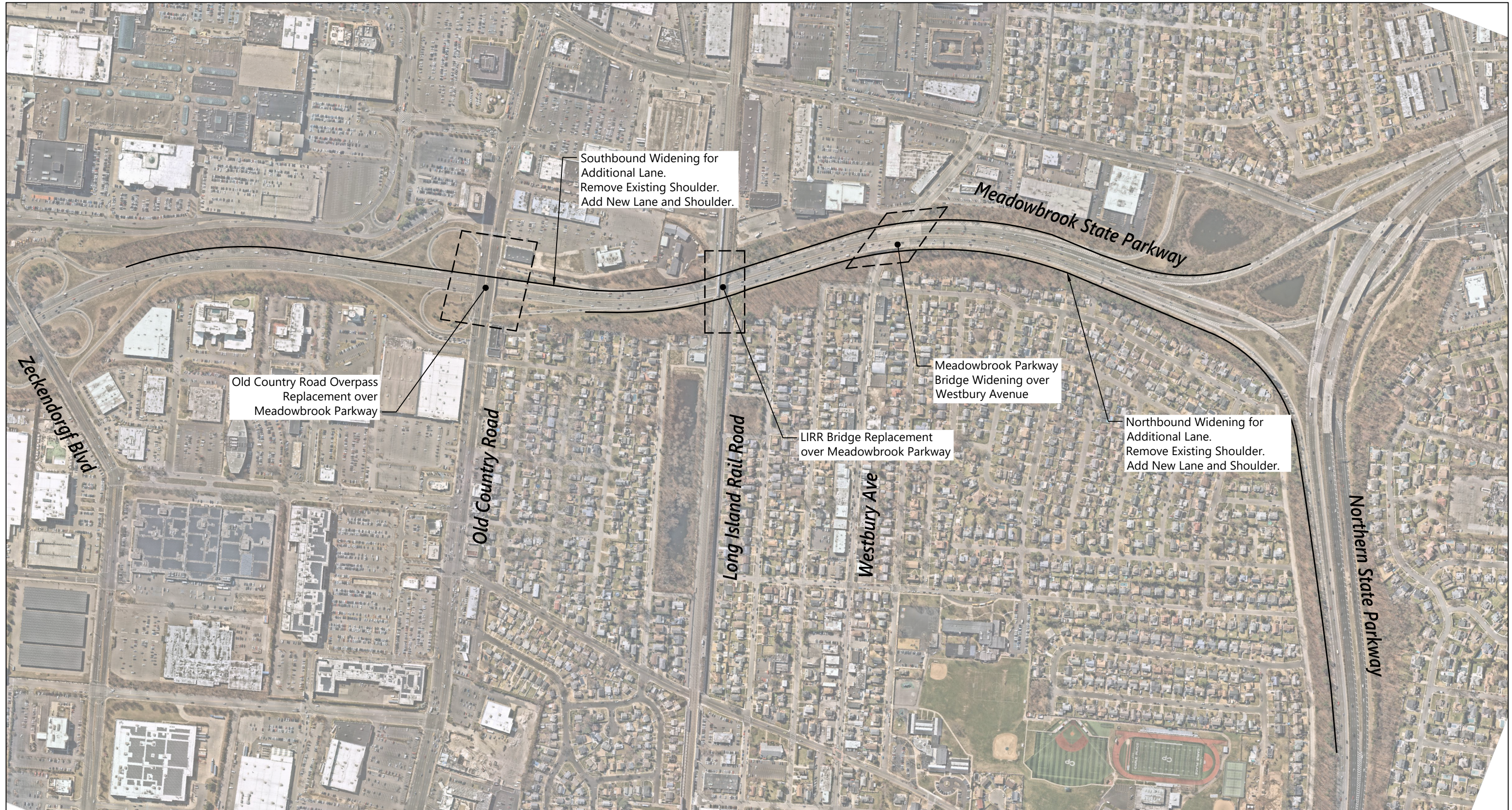


### Figure G: Meadowbrook State Parkway Mitigation - Mainline Widening

Sands New York Integrated Resort

Meadowbrook State Parkway, Town of Hempstead, Nassau County

ISSUED | 6/13/2024



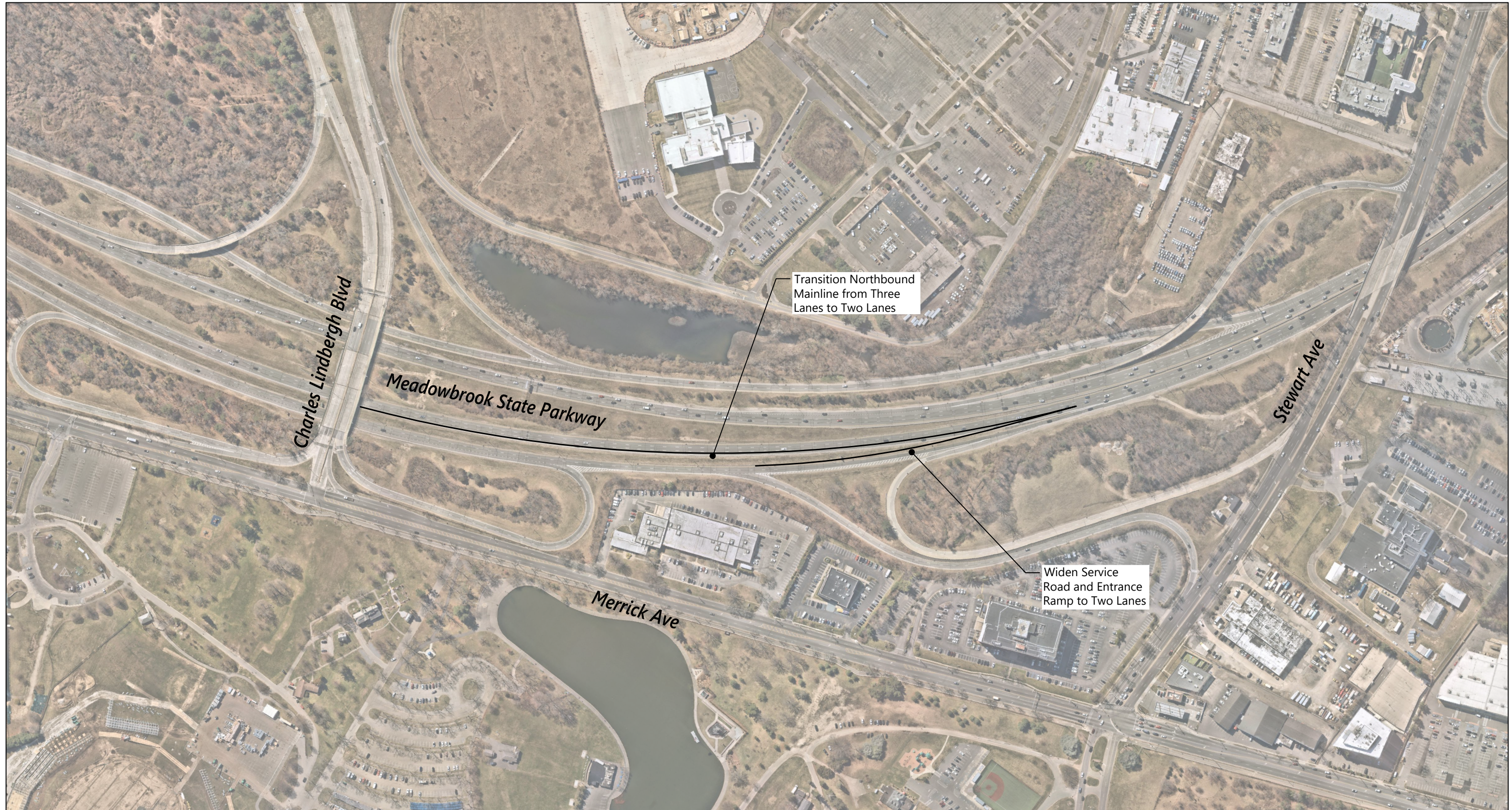


**Figure H: Meadowbrook State Parkway Mitigation - Northbound C/D Road Widening**

Sands New York Integrated Resort

Meadowbrook State Parkway, Town of Hempstead, Nassau County

ISSUED | 6/13/2024





**Figure I: Meadowbrook State Parkway Mitigation - Hempstead Turnpike Eastbound to Southbound Meadowbrook State Parkway Ramp & Charles Lindbergh Boulevard Eastbound to Southbound Meadowbrook State Parkway Ramp**

Sands New York Integrated Resort  
Meadowbrook State Parkway, Town of Hempstead, Nassau County

ISSUED | 10/24/2024

