



# Appendix 3.6-4

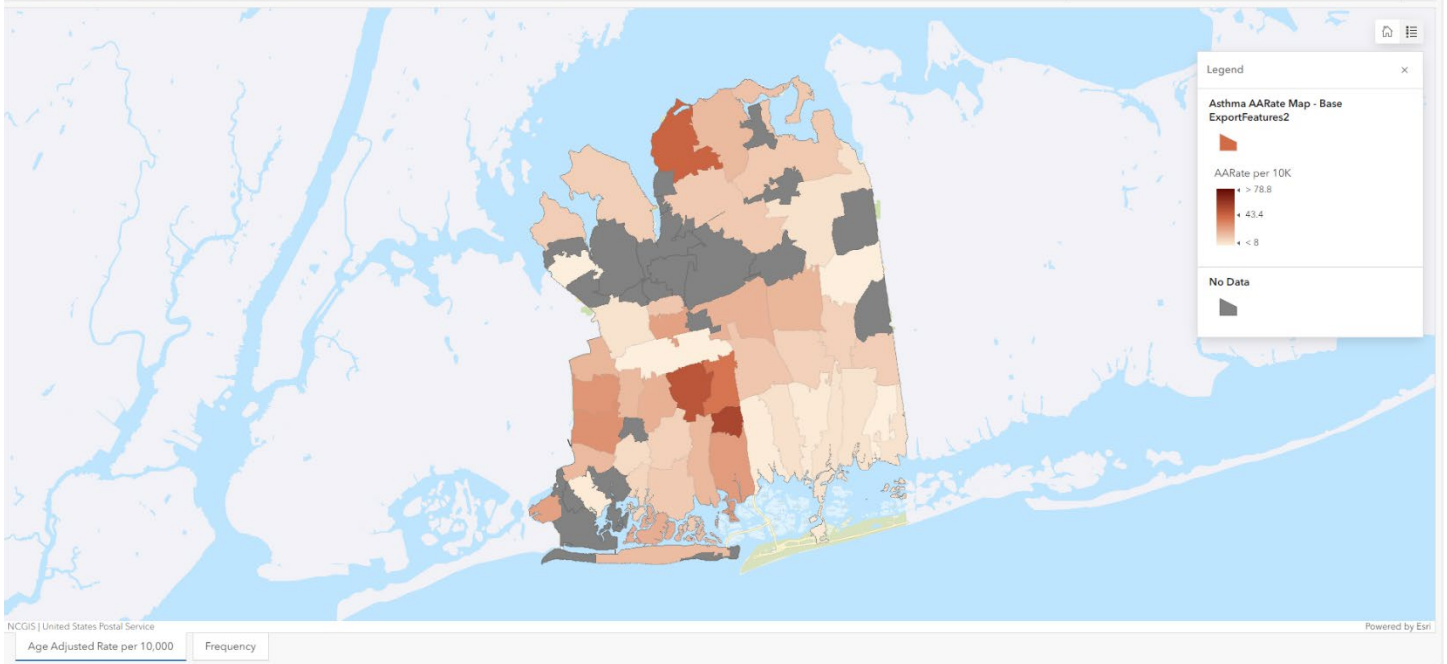
**Nassau County Department of Health  
Asthma Dashboard**

# Nassau County Asthma Rates per 10,000 Population and Frequencies, 2022

## Asthma Emergency Department Visits

Data was cleaned to comply with SPARCS data regulations. All categories with frequency values of 10 or less have been removed.

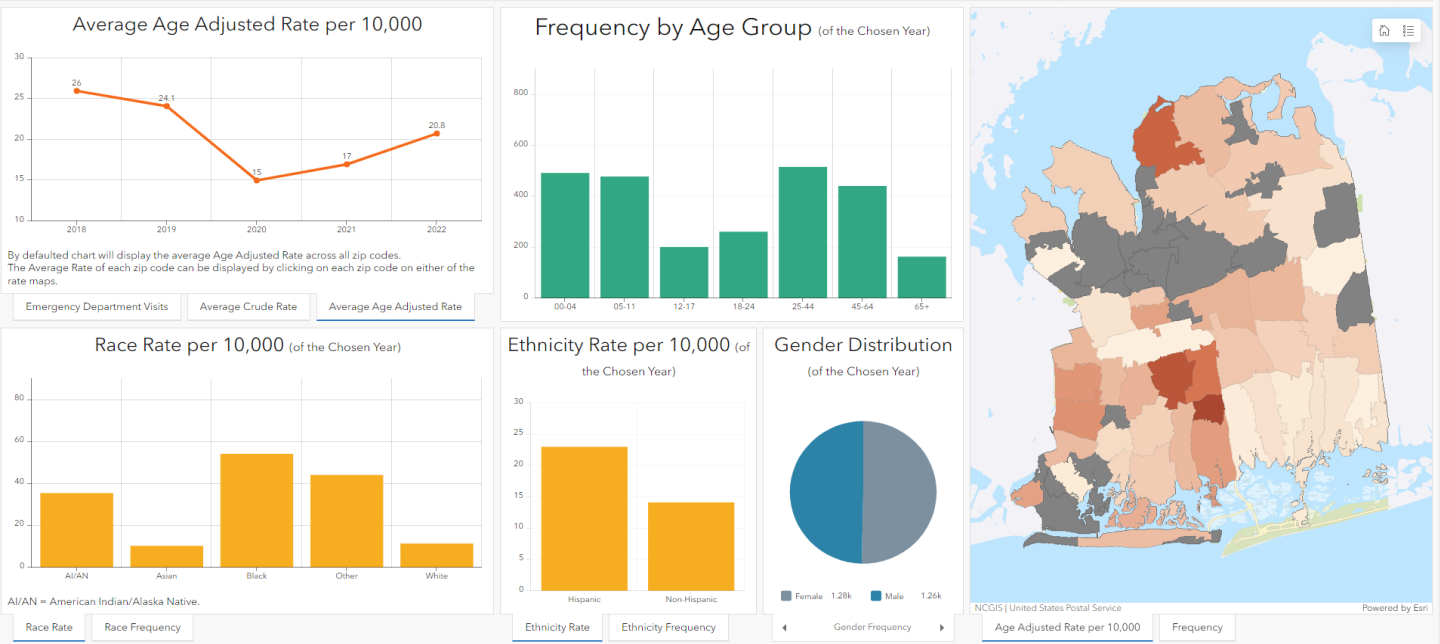
Select a category: 2018 2019 2020 2021 2022



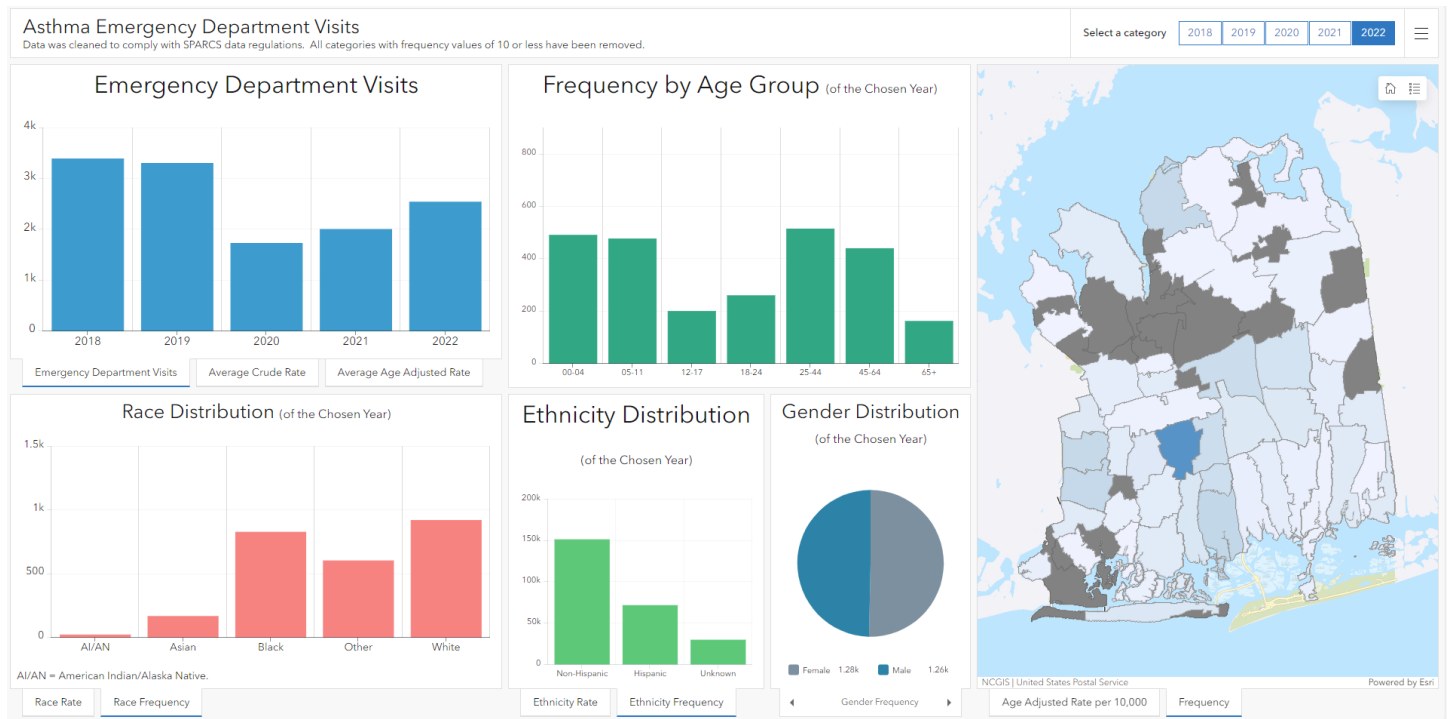
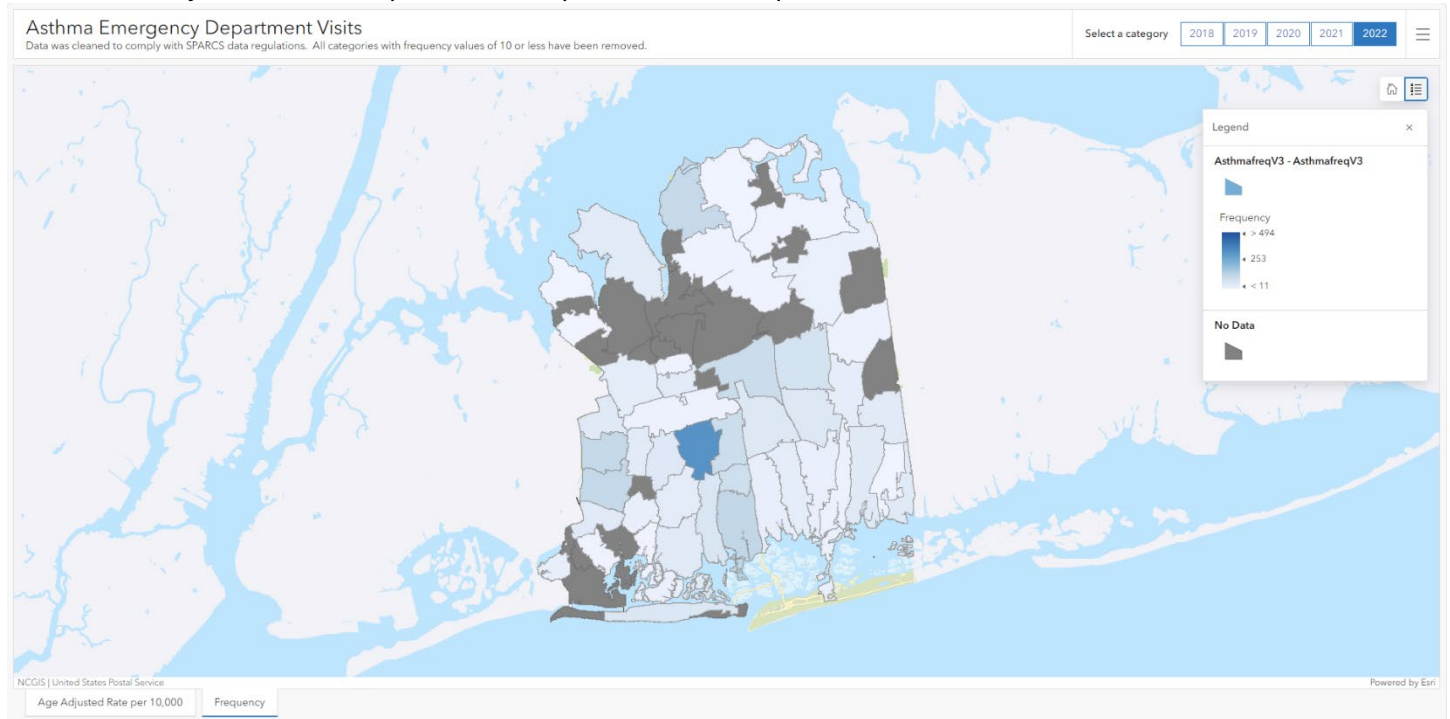
## Asthma Emergency Department Visits

Data was cleaned to comply with SPARCS data regulations. All categories with frequency values of 10 or less have been removed.

Select a category: 2018 2019 2020 2021 2022



# Nassau County Asthma Rates per 10,000 Population and Frequencies, 2022



\*For the year 2022, the age-adjusted asthma rate for Uniondale was 40.9/10,000 population, compared to 20.65/10,000 population, for the county as a whole.