



# Appendix 3.1-7

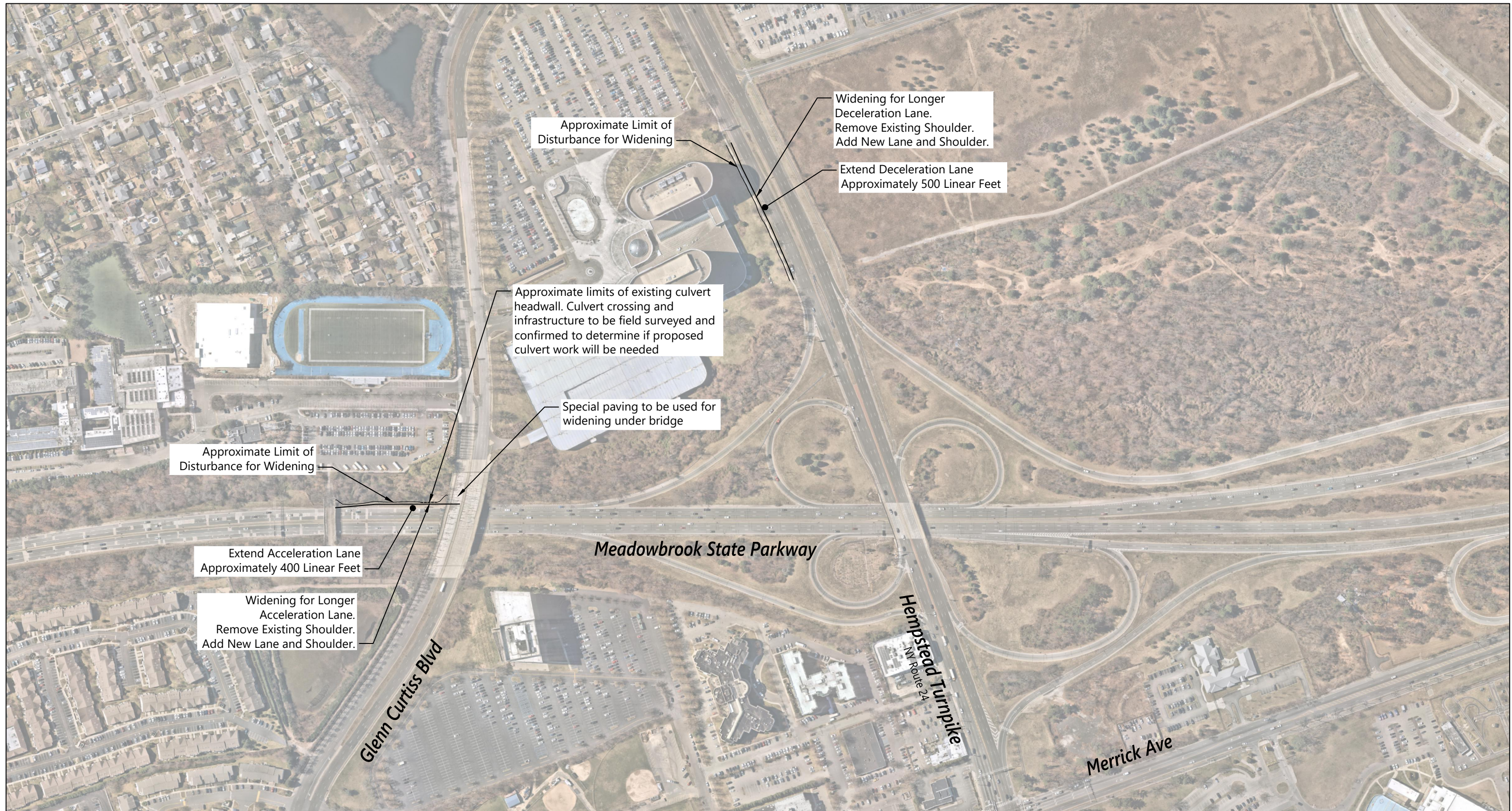
## Limits of Disturbance: Off-Site Traffic Mitigation

# Figure 1: Meadowbrook State Parkway Mitigation - Hempstead Turnpike Eastbound to Southbound Meadowbrook State Parkway Ramp Limit of Disturbance (Plan)

Sands New York Integrated Resort

09/06/2024

Meadowbrook State Parkway, Town of Hempstead, Nassau County



Basemap Source: Nearmap

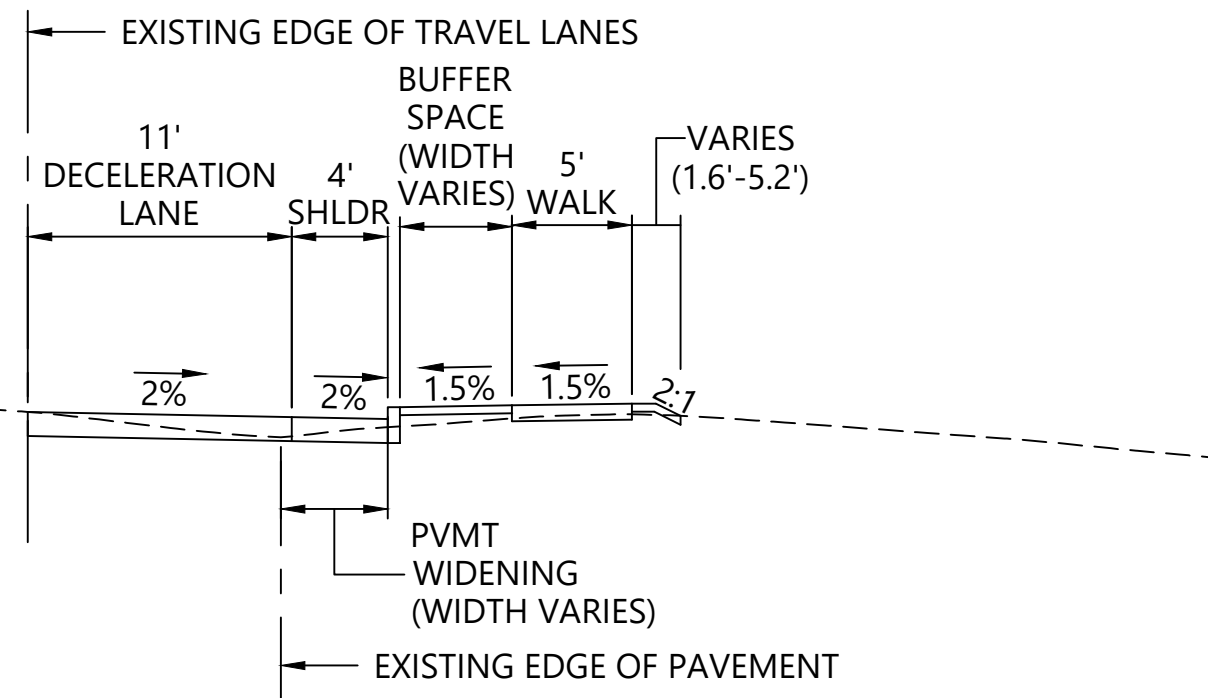


**Figure 2: Meadowbrook State Parkway Mitigation - Hempstead Turnpike Eastbound to Southbound Meadowbrook State Parkway Ramp Limit of Disturbance (Typical Sections)**

Sands New York Integrated Resort

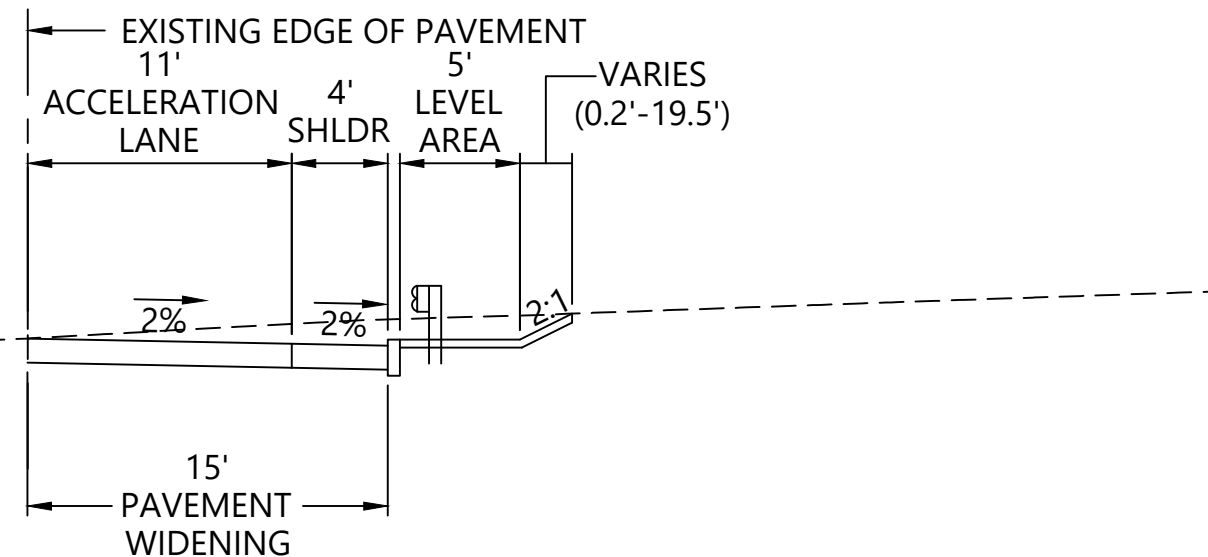
09/06/2024

Meadowbrook State Parkway, Town of Hempstead, Nassau County



**HEMPSTEAD TURNPIKE  
DECELERATION LANE**

NOT TO SCALE



**MEADOWBROOK STATE PARKWAY  
ACCELERATION LANE**

NOT TO SCALE

**HEMPSTEAD TURNPIKE DECELERATION LANE  
ASSUMPTIONS**

- Proposed 11 foot wide deceleration lane and 4 foot shoulder from edge of existing travel lane at 2% cross slope and complete pavement replacement
- Pavement widening width varies
- Proposed curbing with 6 inch reveal at edge of shoulder
- Proposed buffer space and sidewalk matching existing widths at 1.5% cross slope
- 2:1 slope to meet existing ground

**MEADOWBROOK STATE PARKWAY ACCELERATION  
LANE ASSUMPTIONS**

- Proposed 11 foot wide acceleration lane and 4 foot shoulder
- 15 foot pavement widening from edge of existing travel lanes at 2% cross slope
- Proposed mountable curbing with 3 inch reveal at edge of shoulder
- 5 foot level area for highway guard
- 2:1 slope to meet existing ground

Note: The existing culvert crossing and infrastructure to be field surveyed and confirmed to determine if proposed culvert work will be needed.

# Figure 1.0: Sands LOD Full

Sands New York Integrated Resort  
Meadowbrook State Parkway | Town of Hempstead, Nassau County



August 05, 2024



Existing Roadway Edge

Approximate Limit of Disturbance

Proposed Total Acres Disturbed  
by 12 Foot Lane Widening: 6.1

**Figure 1.1: Sands LOD: Page 1 of 8**

Sands New York Integrated Resort  
Meadowbrook State Parkway | Town of Hempstead, Nassau County



August 05, 2024



Existing Roadway Edge

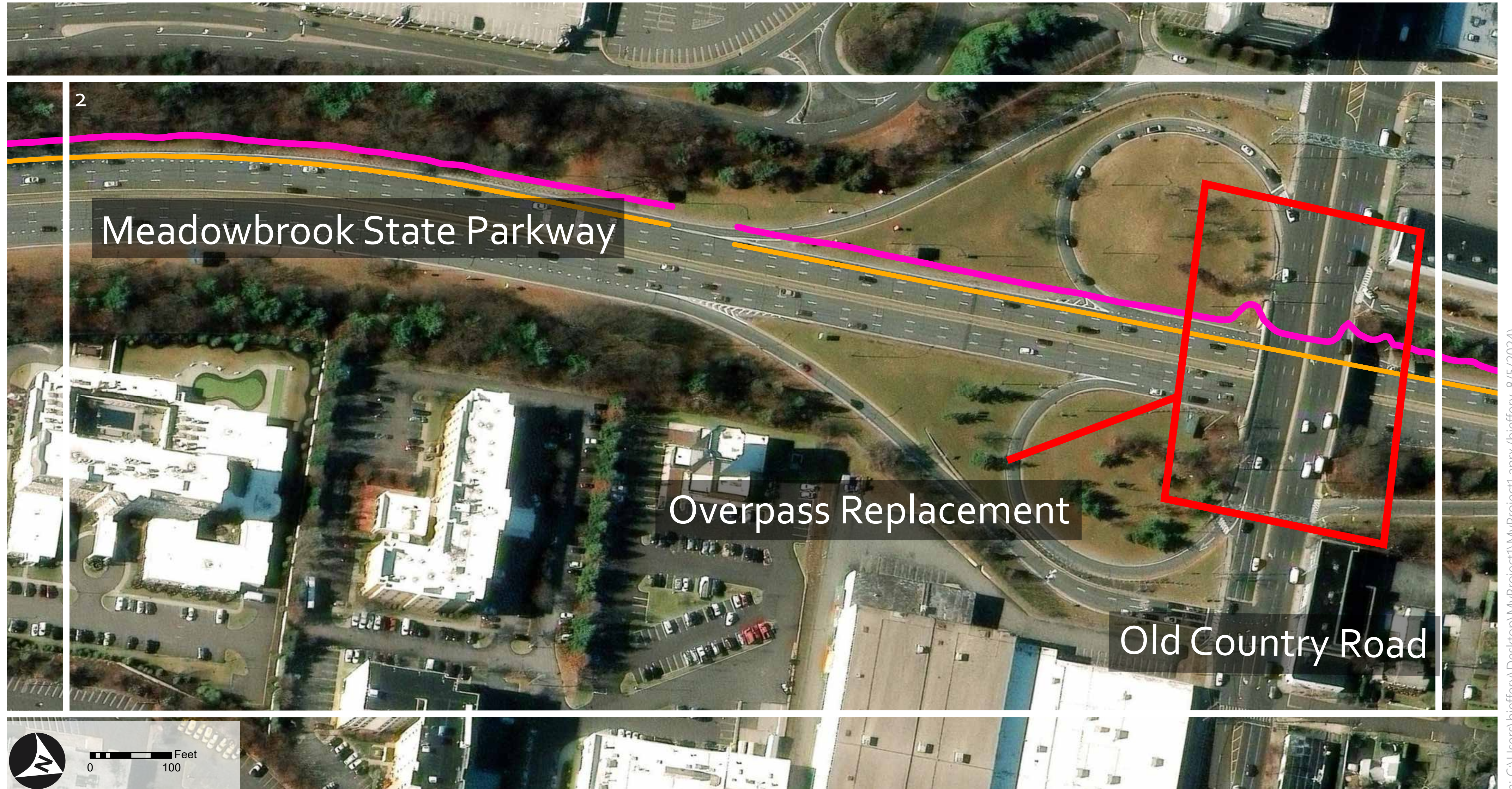
Approximate Limit of Disturbance

**Figure 1.2: Sands LOD: Page 2 of 8**

Sands New York Integrated Resort  
Meadowbrook State Parkway | Town of Hempstead, Nassau County



August 05, 2024



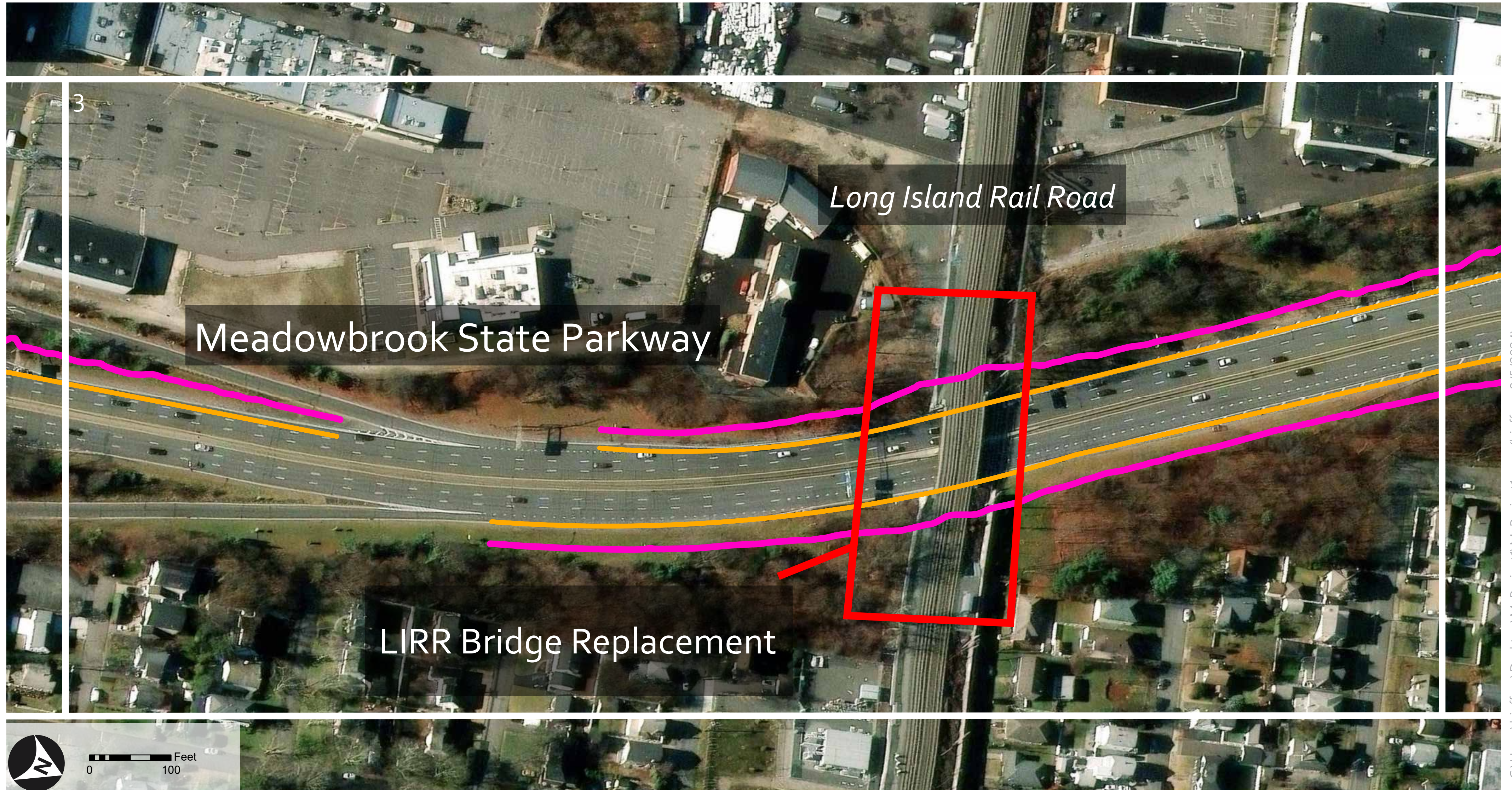
Path: C:\Users\bjeffery\Desktop\MyProject\MyProject1.aprx (bjeffery, 8/5/2024)

Figure 1.3: Sands LOD: Page 3 of 8

Sands New York Integrated Resort  
Meadowbrook State Parkway | Town of Hempstead, Nassau County



August 05, 2024



Existing Roadway Edge

Approximate Limit of Disturbance

Figure 1.4: Sands LOD: Page 4 of 8

Sands New York Integrated Resort  
Meadowbrook State Parkway | Town of Hempstead, Nassau County



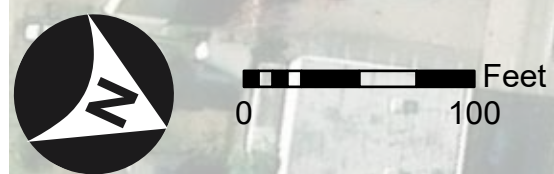
August 05, 2024



Meadowbrook State Parkway

Bridge Widening over  
Westbury Ave

Westbury Ave



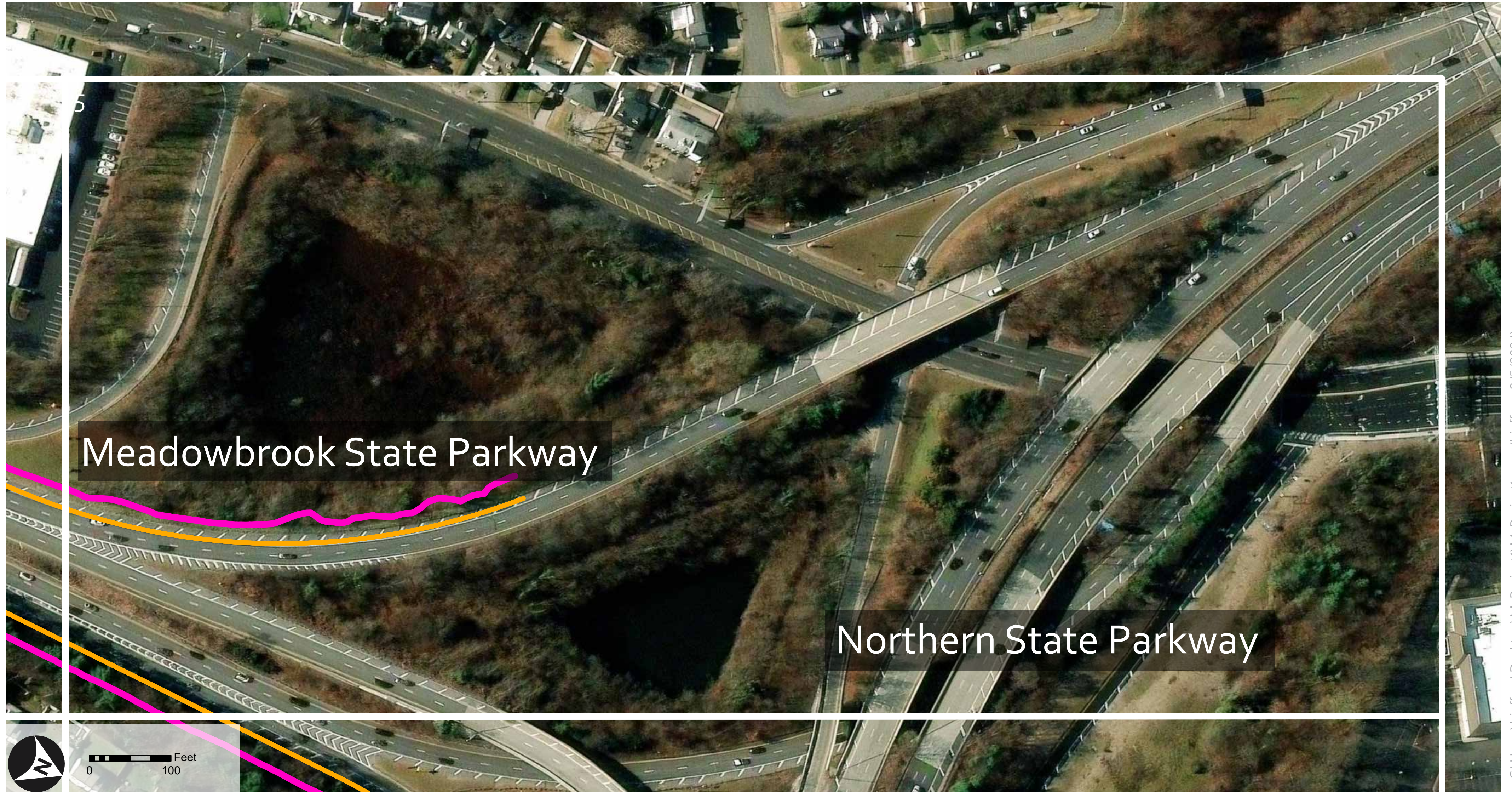
Existing Roadway Edge      Approximate Limit of Disturbance

Path: C:\Users\bjeffery\Desktop\MyProject\MyProject1.aprx (bjeffery, 8/5/2024)



**Figure 1.5: Sands LOD: Page 5 of 8**

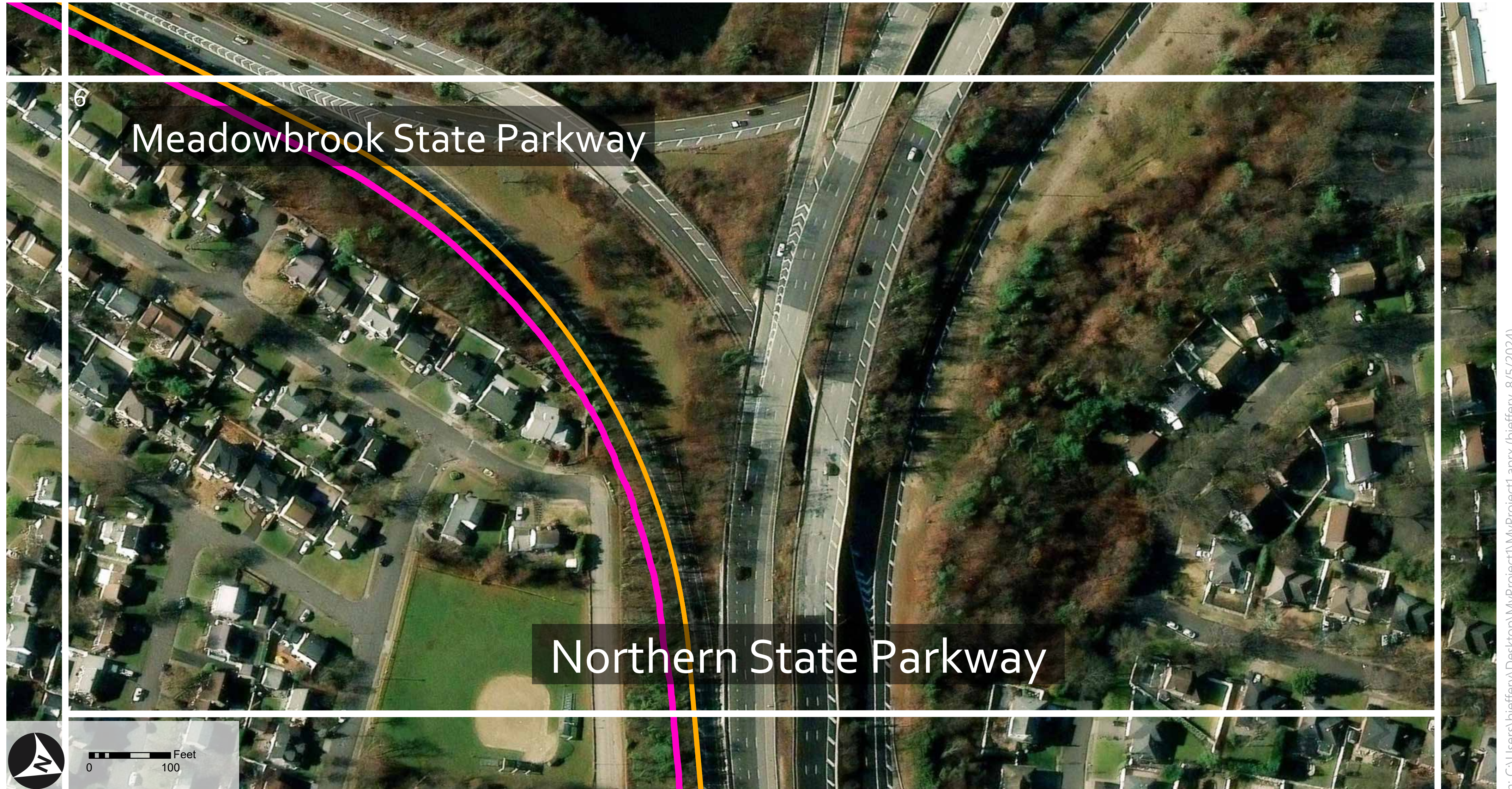
Sands New York Integrated Resort  
Meadowbrook State Parkway | Town of Hempstead, Nassau County



— Existing Roadway Edge      — Approximate Limit of Disturbance

**Figure 1.6: Sands LOD: Page 6 of 8**

Sands New York Integrated Resort  
Meadowbrook State Parkway | Town of Hempstead, Nassau County



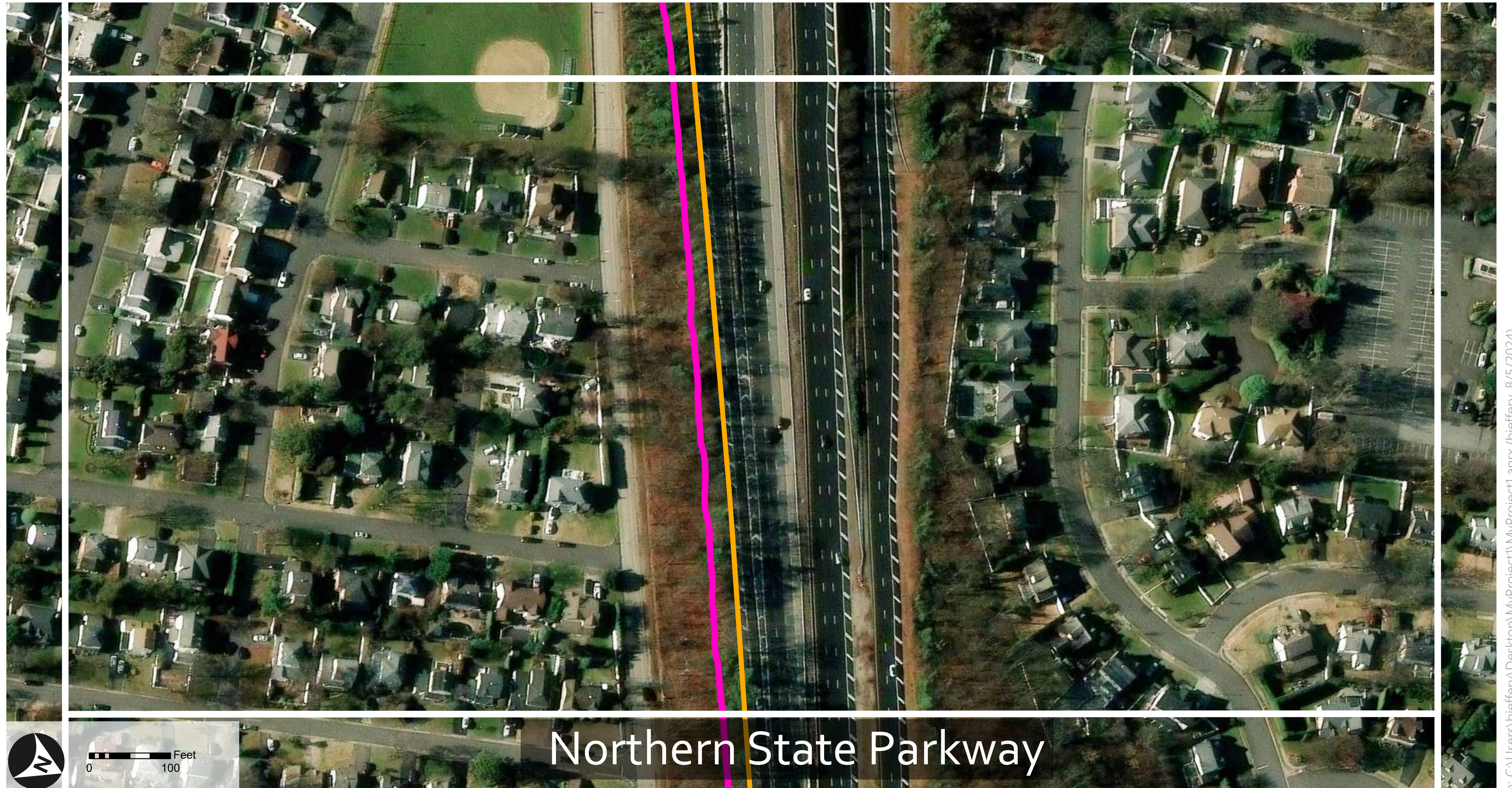
— Existing Roadway Edge      — Approximate Limit of Disturbance

# Figure 1.7: Sands LOD: Page 7 of 8

Sands New York Integrated Resort  
Meadowbrook State Parkway | Town of Hempstead, Nassau County



August 05, 2024

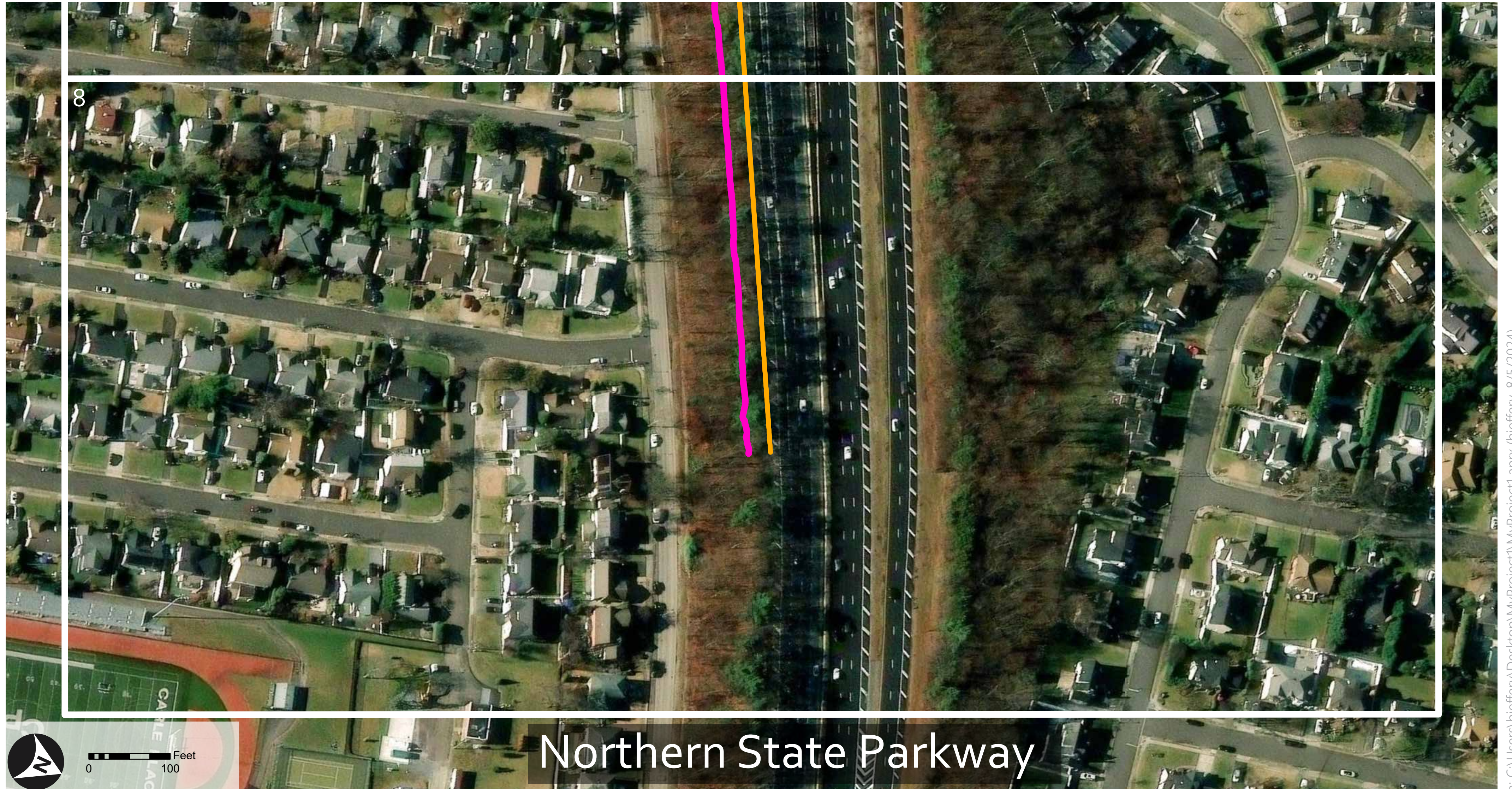


Existing Roadway Edge

Approximate Limit of Disturbance

**Figure 1.8: Sands LOD: Page 8 of 8**

Sands New York Integrated Resort  
Meadowbrook State Parkway | Town of Hempstead, Nassau County



Existing Roadway Edge

Approximate Limit of Disturbance