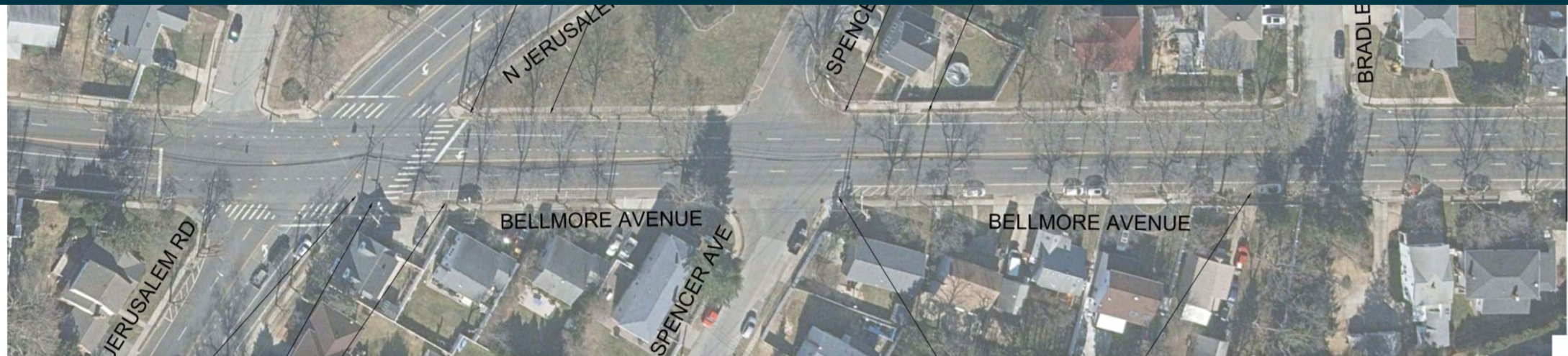


# N. Jerusalem Road to South of Bradley Court



MATCHLINE - SEE DWG. NO. CP-2

EXISTING ROADWAY

LEGEND

	SPEED AWARENESS SIGNS
	EXISTING/PROPOSED TRAFFIC SIGNAL
	PROPOSED PAINTED MEDIAN
	PROPOSED BULB-OUT



MATCHLINE - SEE DWG. NO. CP-2

PROPOSED ROAD DIET

INSTALL OVERHEAD SPEED AWARENESS DEVICE





# South of Bradley Court to South of Decatur Avenue

MATCHLINE - SEE DWG. NO. CP-1



MATCHLINE - SEE DWG. No. CP-3



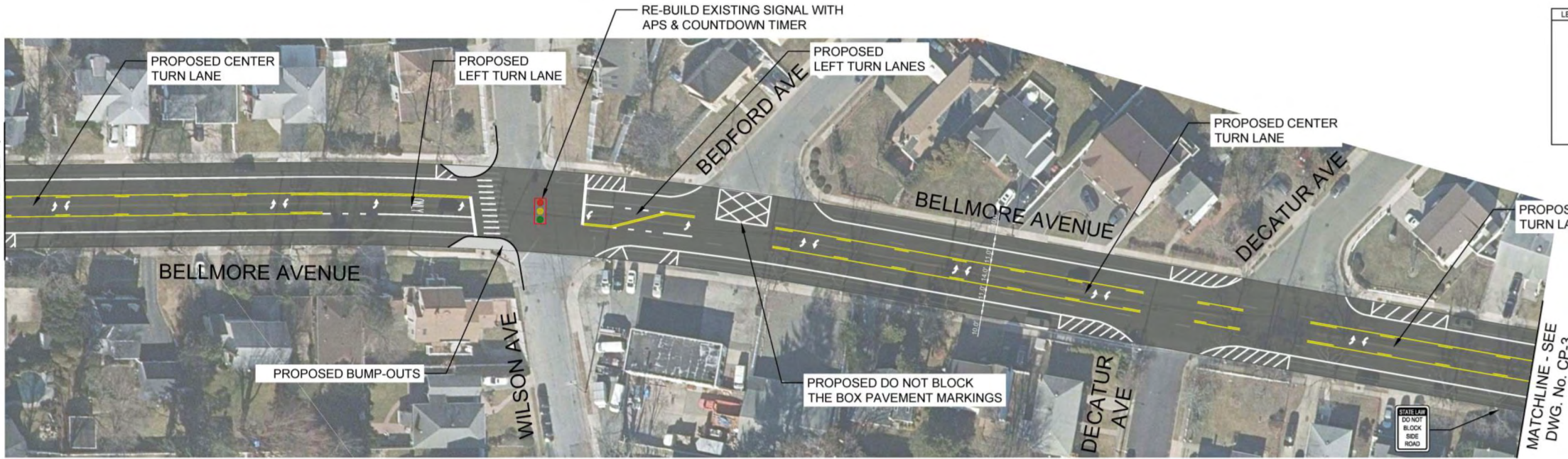
**EXISTING ROADWAY**



STREET SIGN



MATCHLINE - SEE DWG. NO. CP-1



MATCHLINE - SEE DWG. No. CP-3

PROPOSED CENTER TURN LANE

PROPOSED LEFT TURN LANE

RE-BUILD EXISTING SIGNAL WITH APS & COUNTDOWN TIMER

PROPOSED LEFT TURN LANES

PROPOSED CENTER TURN LANE

PROPOSED BUMP-OUTS

PROPOSED DO NOT BLOCK THE BOX PAVEMENT MARKINGS

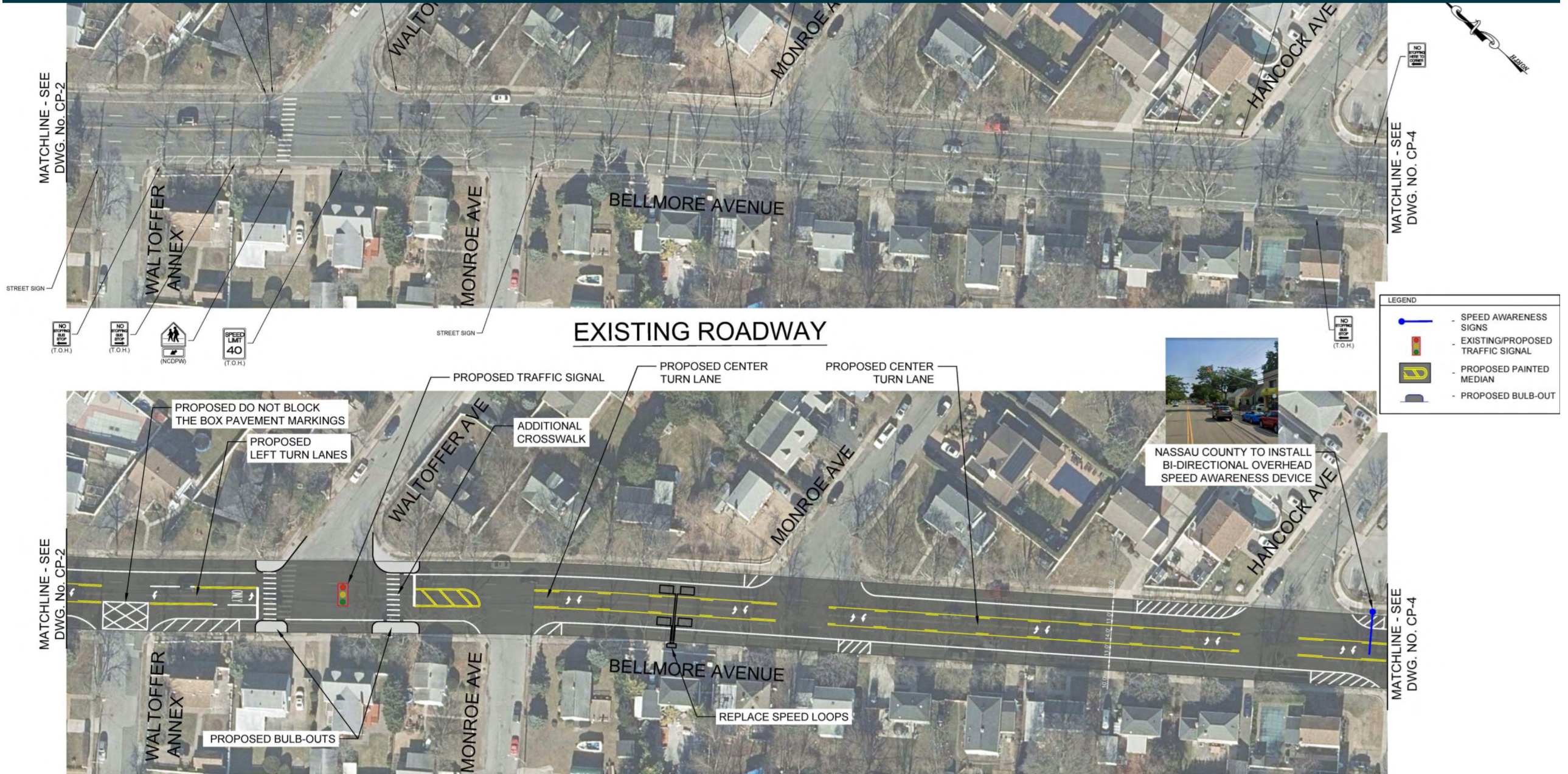
PROPOSED CENTER TURN LANE

LEGEND	
	SPEED AWARENESS SIGNS
	EXISTING/PROPOSED TRAFFIC SIGNAL
	PROPOSED PAINTED MEDIAN
	PROPOSED BULB-OUT



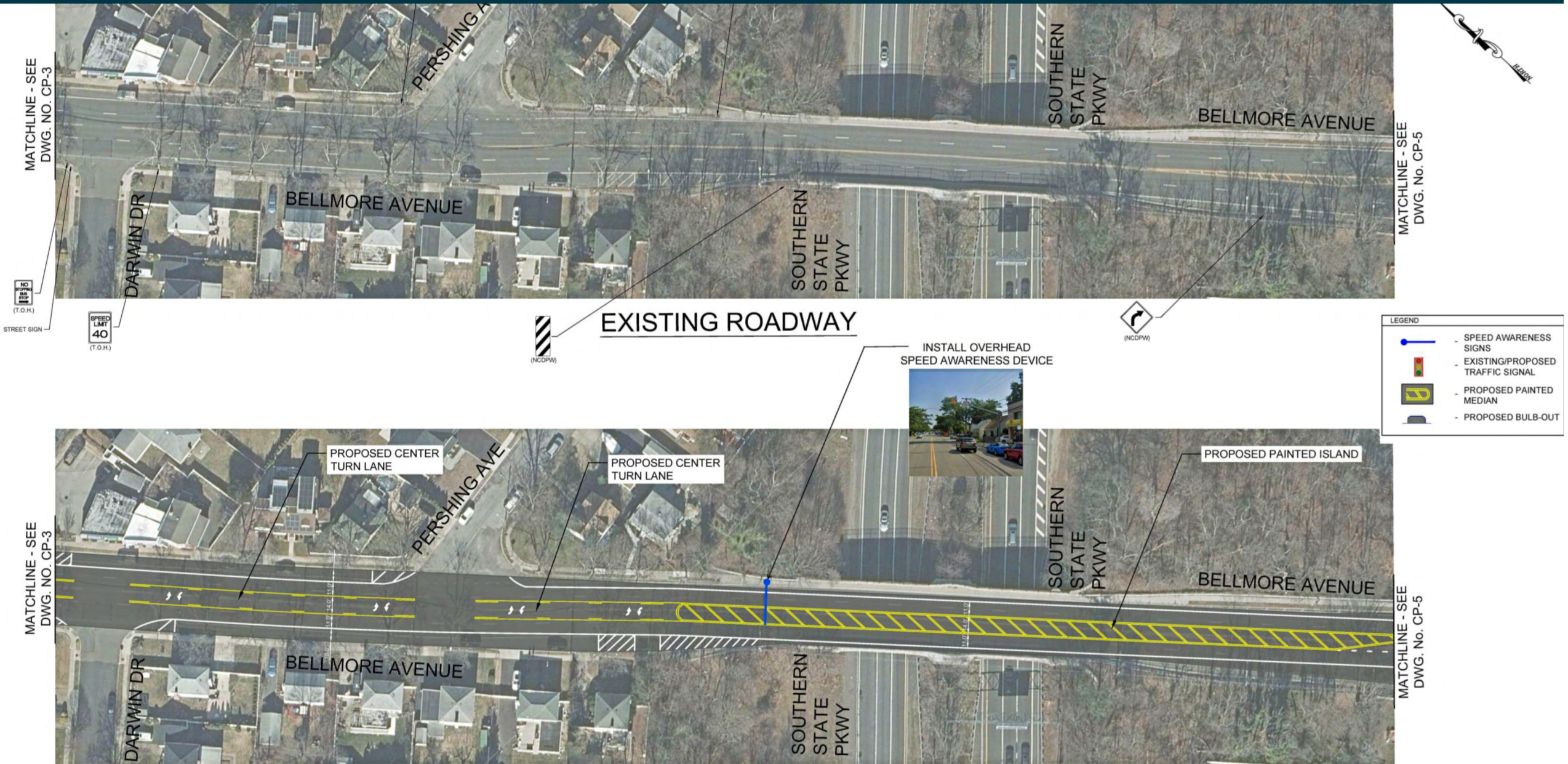


# South of Decatur Avenue to South of Hancock Avenue





# South of Hancock Avenue to South of Southern State



PROPOSED ROAD BUILT



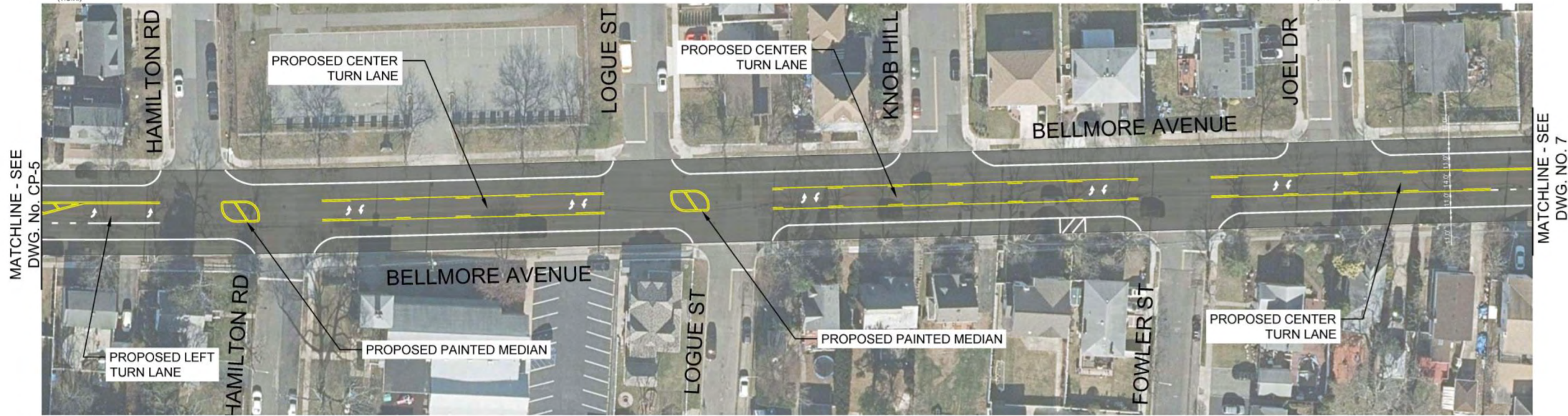




# South of Schiller Avenue to South of Joel Drive



LEGEND	
	SPEED AWARENESS SIGNS
	EXISTING/PROPOSED TRAFFIC SIGNAL
	PROPOSED PAINTED MEDIAN
	PROPOSED BULB-OUT



**PROPOSED ROAD DIET**



# South of Joel Drive to South of Cleveland Street





# South of Cleveland Street to Newbridge Road

MATCHLINE - SEE  
DWG. NO. 7



LEGEND	
	- SPEED AWARENESS SIGNS
	- EXISTING/PROPOSED TRAFFIC SIGNAL
	- PROPOSED PAINTED MEDIAN
	- PROPOSED BULB-OUT

MATCHLINE - SEE  
DWG. NO. 7

