



**Nassau County Department of Human Services  
Office of Mental Health, Chemical Dependency  
and Developmental Disabilities Services**

**Directions in Nassau County  
Mental Health, Substance Abuse, and  
Developmental Disabilities Resources**

**Town Hall**

**September 25, 2024**



**Office of  
Mental Health**



**Office of Addiction  
Services and Supports**

# Today's Agenda

- **Nassau County Office of Mental Health, Chemical Dependency & Developmental Disabilities Services**
  - Jill Nevin, Commissioner, Office of Mental Health Chemical Dependency & Developmental Disabilities Services
  - Omayra Perez, R-LCSW, Director of Community Services
  - Calle Panakos, Director of Education & Training
  - Edward Rebenwurz, CEO, Triumph Treatment Center, Keynote Speaker
  - Nassau County Crisis Response System Panel Presentation, Calle Panakos
- **NYS Office of Mental Health (LIFO)**
  - Brian Peterson, MBA, CASAC-M, Director-Long Island Field Office
  - NYS OMH Program Presentations Erin Rostron, LMSW
- **Nassau County Children's Mental Health**
  - Kathryn Artesani, LMSW, Coordinator of Children Mental Health Services
  - NYS OMH Children Program Presentations
- **NYS Office of Addiction Services & Supports (LIRO)**
  - Michelle Tighe, LCSW, Regional Coordinator of Long Island
  - NYS OASAS Program Presentations
- **Behavioral Health Awareness Training & Education**
  - Calle Panakos, MSHS, Director of Education & Training



**Office of  
Mental Health**



**Office of Addiction  
Services and Supports**

# Introduction:

## **Omayra Perez, LCSW**

Director of Community Services

Nassau County Office of Mental Health, Chemical Dependency and Developmental Disabilities

60 Charles Lindbergh Blvd #160,

Uniondale, NY 11553

[Omayra.Perez@hhsnassaucountyny.us](mailto:Omayra.Perez@hhsnassaucountyny.us)

## **Brian Peterson, MBA, CASAC-M**

Director – Long Island Field Office

New York State Office of Mental Health (OMH)

998 Crooked Hill Road Building 45, 3<sup>rd</sup> Floor

West Brentwood, NY 11717

[Brian.Peterson@omh.ny.gov](mailto:Brian.Peterson@omh.ny.gov)



**Office of  
Mental Health**



**Office of Addiction  
Services and Supports**

# Introduction:

**Michelle Tighe, LCSW**

Regional Coordinator

NYS-OASAS Long Island Regional Office

Pilgrim Psychiatric Center, Building #1

998 Crooked Hill Road

West Brentwood, New York 11717-1087

[Michelle.tighe@oasas.ny.gov](mailto:Michelle.tighe@oasas.ny.gov)



**Office of  
Mental Health**



**Office of Addiction  
Services and Supports**

# Triumph Treatment: A New Opioid Treatment Program Launches in Long Beach



**Office of  
Mental Health**



**Office of Addiction  
Services and Supports**

# Mission Statement

- Triumph Treatment is dedicated to providing comprehensive and compassionate opioid treatment services to individuals seeking recovery from opioid use disorder.
- Our mission is to empower patients to regain control of their lives, promote lasting recovery, and enhance overall well-being through evidence-based treatment and personalized care.

# Statement of Values

- **Compassion:** We demonstrate empathy and understanding while supporting patients throughout their recovery journey.
- **Respect:** We treat all individuals with dignity, respect, and inclusivity, valuing their unique experiences and perspectives.
- **Excellence:** We uphold the highest standards of care, embracing evidence-based practices and continuous quality improvement.
- **Collaboration:** We foster a culture of teamwork, working collaboratively with patients, staff, and community partners to achieve shared goals.
- **Integrity:** We operate with honesty, transparency, and ethical conduct in all aspects of our organization.

# Brief History of Triumph

- Triumph Treatment recently opened, after over 5 years of effort, as a response to the growing opioid crisis in our community. The program was established to replace the former program at Long Beach Medical Center (LBMC), the first suburban methadone clinic in the U.S.
- LBMC had served the community for 43 years until it was tragically destroyed by Superstorm Sandy, leading to the hospital's subsequent bankruptcy and the displacement of over 200 patients.
- Triumph fills this void in treatment and is committed to delivering exceptional care and reducing the impact of opioid use disorder on individuals and families.



# Description of Program and Services

- Triumph offers comprehensive Medication for Opioid Use Disorder (MOUD), combining FDA-approved medications, **including methadone**, with counseling and behavioral therapies.
- Our patient-centered approach ensures individualized treatment plans, empowering patients to achieve sustainable recovery.
- Licensed by OASAS, SAMHSA, and DEA. Accredited by COA
- We are open 6 days a week (closed Saturdays)

# Who We Serve

- Our services cater to adults aged 18 and above who are seeking treatment for opioid use disorder. We serve a diverse population, including individuals from different ethnicities, socio-economic backgrounds, and cultural experiences.

# Recent Regulatory Changes

- SAMHSA's Final Rule on Opioid Use Disorder Treatment
  - Final Rule (42 CFR Part 8) issued February 2, 2024
  - Effective Date: April 2, 2024
  - Compliance Date: October 2, 2024

# Recent Regulatory Changes: Highlights

- Increases access to admission to OTPs—eliminates one-year OUD history requirement prior to admission
- Screenings and comprehensive exams can be conducted via telehealth
- Removes participation in counseling as contingency for medication
- Initial methadone dose increased, now up to 50 mg. Higher doses allowable with clinical justification
- Take home methadone schedules are significantly increased:
  - **Up to 7 days** of take-home doses for the first 14 days in treatment
  - **Up to 14 days** of take-home doses from days 15 to 30
  - **Up to 28 days** of take-home doses after day 31

# Who Is NOT Appropriate for Triumph?

Examples include:

- No opioid dependence
- Under 18
- Acute psychiatric instability
- Requires only pain management

# Contact Us

- **Address:** 309 W Park Avenue, Long Beach
  - Right across from CVS
  - Ample parking onsite
  - Bus stop outside
- **Telephone:** (516) 854-5400
- **Fax:** (516) 854-5300
- **Email:** [info@triumphtreatment.com](mailto:info@triumphtreatment.com)

**Thank You!**

**Please keep in touch!**



**My email: [edward@triumphtreatment.com](mailto:edward@triumphtreatment.com)**

# Nassau County Crisis Response Services



**Office of  
Mental Health**



**Office of Addiction  
Services and Supports**



# Nassau County Behavioral Health Helpline

Target Population: Any individual within Nassau County

Services Offered: Telephonic Referrals for Mental Health and Substance community treatment, programs, supports and general information. The intake hotline for Nassau County Mobile Crisis.

Hours of Operation: 24hrs

Contact Information: 516-227-8255 (TALK)

Presenter: Diana Johnson



# South Shore Guidance Center Nassau County Mobile Crisis Team

**Target Population:** Any individual within Nassau County

**Services Offered:** Assess current mental health and safety; determine best level of care for situation; de-escalate crisis; initiate referrals to OMH licensed clinics; facilitate psychiatric evaluation in the hospital under MH Law 9.58; and collaborate with the NCPD/EMS/NAS-TAC in the community as well as through the 911 system

**Hours of Operation:** 8am-12am 7/365

**Contact Information:** 516-227-TALK (8255)

Presenter: Christine Bogle



**Office of  
Mental Health**



**Office of Addiction  
Services and Supports**

LICC received almost 9,000 calls on 988 in 2023. That is a 120% increase in calls from 2022.

988 counselors were able to deescalate and lower caller lethality on 97% of calls. Less than 1% of calls ended with an outside intervention.

- 988 is the three-digit number for the National Suicide Prevention Lifeline
- Direct connection to caring support for anyone in mental health distress. May include:
  - thoughts of suicide
  - substance use crisis
  - emotional distress
- Free
- Can be contacted by phone, chat or text
- Spanish line option
- Has interpretation services available in over 150 languages

## What happens when I call 9-8-8...

A trained, caring and compassionate crisis counselor will answer your call (or chat or text) and invite you to talk about what is going on.

They will:

- Listen to your story
- Ask suicide safety assessment questions
- Collaborate with you on a safety plan and/or next steps
- Provide you with local resources, if wanted
- Offer you a follow-up call, if needed

## Which Number to Call: 9-1-1 or 9-8-8?

When you've got a medical, police, fire or rescue **emergency**, you call 9-1-1

When you have an urgent **suicide or mental health crisis** need, you call 9-8-8

9-1-1 is focused on **dispatching** EMS, Fire and PD

9-8-8 is focused on **resolving the crisis telephonically** (or via chat/text) – using the least invasive intervention

# Mobile Recovery Unit

## Hope Rides Here



### Services Offered:

- Medication Assisted Treatment
- Suboxone and Vivitrol Inductions
- Peer Support Services
- Individual and Group Counseling
- Harm Reduction Education
- Naloxone Training
- Health Screening and Assessment



Office of  
Mental Health



Office of Addiction  
Services and Supports



# Mobile Recovery Unit

## Hope Rides Here

### Target Population:

18 years and older with SUD and Mental Health Concerns

### Our Goal:

Increase access to treatment, reduce unmet needs and reduce overdose related deaths.

Our services are meant to add and expand treatment and recovery services in high need areas across Nassau County, helping people connect with the services they need, as they start down the road to recovery.

### How do we do this?

- By utilizing our fleet of specially designed “Hope Rides Here” vehicles:
  - RV
  - Box Truck
  - 4 SUV/Vans
- Staffing:
  - Up to 4 Clinicians
  - Up to 8 Peer Services Specialists
  - Medical Assistant
  - Prescriber



Office of  
Mental Health



Office of Addiction  
Services and Supports



# Mobile Recovery Unit Hope Rides Here

## Hours of Operation:

- **Same Day Access/ Walk-In Hours**
  - Tuesday & Friday - 9:00am – 11:00am
  - Thursday - 2:30pm – 5:00pm
- **Operating Hours**
  - Monday - Friday 8:30am – 4:30pm
- **Contact Information**
  - Phone: 516-396-2778
  - Email: [rfalcone@centralnassau.org](mailto:rfalcone@centralnassau.org)



Office of  
Mental Health



Office of Addiction  
Services and Supports

# Intensive Crisis Stabilization Center (ICSC)

## What is an ICSC?

- Voluntary crisis treatment services
- Emphasis on peer and recovery support
- Safe and therapeutic environment
- Rapid access to services for acute symptoms
- Diversion from emergency room and/or inpatient hospital
- Recipients may receive services for up to twenty-four hours



Office of  
Mental Health



Office of Addiction  
Services and Supports

# Intensive Crisis Stabilization Center (ICSC)

## The ICSC will offer an array of services:

- Triage and screening
- Assessment
- Therapeutic interventions
- Peer support
- Psychosocial Assessment
- Psychiatric Diagnostic Evaluation and Plan
- Medication Management and Training
- Medication Therapy
- Mild to Moderate Detoxification Services
- Medication for Addiction Treatment (MAT)
- Ongoing observation
- Care Collaboration with a Recipient's Friends, Family, and/or Care Providers
- Discharge and Aftercare Planning



Office of  
Mental Health



Office of Addiction  
Services and Supports

# Intensive Crisis Stabilization Center (ICSC)

## Hours of Operation:

- 24 hours/ 7 days a week including all major holidays

## Contact Information:

- Sharayah Sanon – Program Director
- Phone: 516-822-6111
- Email: [ssanon@centralnassau.org](mailto:ssanon@centralnassau.org)



Office of  
Mental Health



Office of Addiction  
Services and Supports

# CEC Health Care Safe Harbor Crisis Respite Program

**Target Population:** Adults experiencing a crisis requiring short-term respite placement

**Services Offered:** 7 bed transitional residence

- Up to 28 day length of stay
- Meds & treatment monitoring, ADL training

**Hours of Operation:** 24/7

**To Make a Referral:** Tanya Jackson-Edwards

- **Phone:** (516) 266-9020 x 4218
- **E-mail:** [edwardst@charlesevanscenter.org](mailto:edwardst@charlesevanscenter.org)

Presenter: TJ Edwards



**Office of  
Mental Health**



**Office of Addiction  
Services and Supports**

# South Shore Guidance Center

## Home Based Crisis Intervention Program (HBCI)

**Target Population:** Nassau County child and adolescents between the ages of 5-20 years and 11 months (residing with parent/guardian) at-risk of psychiatric hospitalization.

**Services Offered:** We provide intensive, home-based services; Stabilization of crisis, Advocacy with schools, Parent support/education, Behavior modification training, Linkage to ongoing services.

**Hours of Operation:** 7 days a week, Appointments scheduled at the convenience of clients.

Contact Information: (516) 868-3030

Presenter: Portia Ramsey-Cummings, Program Director ([portia.ramsey@ssgcli.org](mailto:portia.ramsey@ssgcli.org)), Carol Eason, Supervisor ([ceason@ssgcli.org](mailto:ceason@ssgcli.org))



**Office of  
Mental Health**



**Office of Addiction  
Services and Supports**

# **Nassau County Mental Health & Specialty Clinics**

**Brian Peterson, MBA, CASAC-M**

Deputy Director – Long Island Field Office  
New York State Office of Mental Health (OMH)



**Office of  
Mental Health**



**Office of Alcoholism and  
Substance Abuse Services**



**Office of  
Mental Health**

# **Nassau County Mental Health Services**

**Brian Peterson, MBA, CASAC-M  
Director, Long Island Field Office**

SEPTEMBER 23, 2024



**‘To promote the mental health of all New Yorkers,  
with a particular focus on providing hope and  
recovery for adults with serious mental illness and  
children with serious emotional disturbances.’**

**Mission of the New York State Office of Mental Health**

# Service Categories

- Outpatient/Ambulatory  
Treatment  
Wrap-around & Support
- Emergency/Crisis
- Residential
- Inpatient



**Outpatient/  
Ambulatory Treatment and  
Support**

# Outpatient Services

## Treatment Services

Provide treatment and rehabilitation in community-based settings such as Mental Health Outpatient Treatment and Rehabilitative Services.

## Wrap-around and Support Services

Based in the community, these programs help adults diagnosed with serious mental illness to live as independently as possible and help children with serious emotional challenge to remain with their families. Services include family support, case management, vocational, among others. It may also include the provision of transportation to and from facilities or resources specified in the consumer's individual plan as a necessary part of his/her service. While the array of services varies between adults and children, the goal is to support successful and full community living. This includes activities related to the development and operation of outreach interventions in under-served communities to address disparities based upon culture, ethnicity, age, or gender.



# Outpatient Services - Treatment

## Assertive Community Treatment

- Mobile intensive treatment and support to individuals who are diagnosed with severe mental illness and have been unsuccessful in traditional forms of treatment. Specialty Teams have been developed based on this model.
  - **Children and Youth Assertive Community Treatment** - Community based program which provides or arranges for services, treatment and support to families with children at significant risk for out-of-home placement for whom traditionally structured services have not met their needs.

## Mental Health Outpatient Treatment and Rehabilitation Services

- Programs that diagnose and treat mental illness, working with the individual to develop a treatment plan designed to minimize symptoms and adverse effects of illness, maximize wellness, and promote recovery toward achieving life goals.

## Certified Community Behavioral Health Clinic

- A community-based provider that offers a comprehensive range of integrated outpatient mental health and substance use services across the lifespan.

## OnTrackNY

- A team-based, intensive, evidence-based and recovery-oriented Coordinated Specialty Care program that offers comprehensive personalized support to teens and young adults impacted by unexpected changes in their thinking and perceptions.

# Outpatient Services – Treatment

## Personalized Recovery-Orientated Services (PROS)

- Comprehensive PROS with Clinic Treatment - The program integrates treatment, support and rehabilitation in a manner that facilitates the individual's recovery. This program includes the optional Clinic Treatment component.
- Comprehensive PROS without Clinic Treatment - The program integrates treatment, support and rehabilitation in a manner that facilitates the individual's recovery. This program does not include the optional Clinic Treatment component.

## Day Treatment

- Day treatment services for children and adolescents provide intensive, non-residential services. The programs are characterized by a blend of mental health and education services provided in a fully integrated program.

## Partial Hospitalization

- A partial hospitalization program provides active treatment designed to stabilize and ameliorate acute symptoms, to serve as an alternative to inpatient hospitalization, or to reduce the length of a hospital stay within a medically supervised program.

# Outpatient Services - Support

## Specialized Support Services

- **Safe Options Support or 'SOS' Teams** provide pre- and post- housing placement services for chronically unsheltered individuals with an intensive initial outreach and engagement period that includes multiple visits per week.
- **Intensive and Sustained Engagement Teams** provide a voluntary, peer-led engagement approach to supporting individuals to access needed community resources in the least restrictive and most person-centered manner possible.

**Care Coordination** Services include case management, geriatric gatekeeper and mental health/physical health programs, home and community-based coordination, homeless placement, and transition services.

- Critical Time Intervention Team – Adult
- Health Home Care Management
- Health Home Non-Medicaid Care Management
- Geriatric Demo Physical Health - Mental Health Integration
- Adult Home Supportive Case Management
- Homeless Placement Services
- Non-Medicaid Care Coordination
- Specialty Mental Health Care Management
- Transition Management Services

# Outpatient Services - Support

## Adult Behavioral Health HCBS Service/CORE Services

- CORE Empowerment Services - Peer Supports are non-clinical, peer-delivered services with focus on rehabilitation, recovery, and resilience.
- CORE Family Support and Training - Instruction, emotional support, and skill building necessary to facilitate engagement and active participation of the family in the individual's recovery process.
- CORE Psychosocial Rehabilitation - Assist individuals in improving their functional abilities to the greatest degree possible in settings where they live, work, learn, and socialize.
- CORE Community Psychiatric Support and Treatment - Time-limited, goal-directed supports and solution-focused interventions with the intent to achieve person-centered goals and objectives.

**Geriatric Demonstration Project** – Gatekeeper is a geriatric mobile outreach program designed to proactively identify at-risk older adults in the community who are not connected to the service delivery system.



# Outpatient Services - Support

**Child and Family Treatment and Support Services** enable a greater focus on prevention and early intervention by providing an array of Medicaid benefits that offer opportunities to better meet the behavioral health needs at earlier junctures in a child/youth's life to prevent the onset or progression of behavioral health conditions. These following six services will be available to any child eligible for Medicaid who meets relevant medical necessity criteria:

- Family Peer Support Services
- Mobile Crisis Intervention
- Youth Peer Support
- Psychosocial Rehabilitation
- Other Licensed Practitioner
- Community Psychiatric Support and Treatment

**Family Peer Support Services** - an array of formal and informal services and supports provided to families raising a child who is experiencing social, emotional, developmental, substance use and/or behavioral challenges in their home, school, placement, or community.

**Respite Services** - provide a needed break for the family and the child to ease the stress at home and promote overall wellness for the child and his/her family.

# Outpatient Services - Support

**Self-Help** Services include individual or systems advocacy, low-demand drop-in centers, recovery-oriented psychosocial clubs, mutual support groups and networks, and formal educational, recreational or social organizations.

- Advocacy/Support Services may be individual advocacy or systems advocacy or a combination of both.
- Drop-In Center Program is to identify and engage persons who may choose not to participate in more structured programs or who might not otherwise avail themselves of mental health services, and to provide services and supports in a manner which these individuals would accept.
- Psychosocial Club - assist individuals disabled by mental illness to develop or reestablish a sense of self-esteem and group affiliation, and to promote their recovery from mental illness and their reintegration into a meaningful role in community life.

**Education** - Assessment, support, intervention, consulting, referral, rehabilitation or career development services provided in a school setting.

- Promise Zone - Provides a framework for expanded access to mental health services in schools through school-community collaborations among mental health, local school districts, and state and local child/family-serving partners
- School Based Mental Health Program - Provides children and adolescents with emotional/behavioral needs in schools by connecting school districts with community-based providers
- Supported Education - Provides mental health and rehabilitation services to individuals with a serious mental illness to assist them to develop and achieve academic goals in natural and community-based educational settings

# Vocational Programs



*Vocational Services include assessment, training, job finding, paid work, job coaching, employer consultation, and job placement*

## **Affirmative Business/Industry**

- A self-sustaining business or cooperative that is owned and operated by an OMH provider, such as a small retail or wholesale outlet, or manufacturing and service-oriented business.

## **Assisted Competitive Employment**

- Brief pre-vocational support along with ongoing mental health supports in order to obtain and sustain integrated, competitive employment, or support for promotion or to find new employment.

## **Ongoing Integrated Supported Employment Services**

- Services for specific individuals who have achieved job stabilization through ACCES-VR intensive employment services.

## **Transformed Business Model**

- A self-sustaining business such as a small retail or wholesale outlet, or manufacturing and service-oriented business that is owned and operated by an OMH provider.

## **Vocational Services - Children & Family**

- Provides work training, educational assistance and clinical support services for those youth with poor academic performance and social adjustment.

## **Work Program**

- Provides vocational assessment and job skills training, followed by transitional work experience for individuals (ages 18+) with serious mental illness.

# **Emergency/ Crisis Services**

# Emergency/Crisis Services

Provide or facilitate rapid psychiatric and/or medical stabilization services. They seek to ensure the safety of persons in emotional distress and/or persons who present a risk to themselves or others. The program types range across multiple services including telephonic or electronic triage, mobile crisis, crisis stabilization, and crisis residential programs to comprehensive psychiatric emergency programs, better known as CPEP, as well as other services aimed at assisting individuals in crisis.

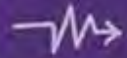
# Emergency/Crisis Services

## What is 988?

988 is the new three-digit number that connects people to the National Suicide Prevention Lifeline. This service is for anyone who is:



suicidal



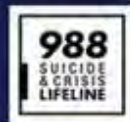
experiencing a mental health  
or substance use-related crisis



experiencing any kind of  
emotional distress



Office of  
Mental Health



For more information and 988 community resources, visit: [988.ny.gov](https://988.ny.gov)

# Crisis Response System



- **988 Crisis Contact Center** – provide telephonic counseling, support and connection to other components of the crisis response system



- **Mobile Crisis Services** - specific activities delivered by a state-approved mobile crisis provider with the purpose of response, intervention, stabilization, and referral/linkages to appropriate treatment and services



- **Crisis Stabilization Center**

- An Intensive Crisis Stabilization Center provides urgent treatment to children and adults experiencing a mental health and/or substance use crisis.
- A Supportive Crisis Stabilization Center provides support and assistance to children and adults experiencing a mental health and/or substance use crisis.



- **Home Based Crisis Intervention** – a clinically oriented program with support services to assist families with children in crisis. The target population is families with a child or adolescent ages 5 to 17 years of age.

# Crisis Response - Residential

## **Intensive Crisis Residence**

- A licensed short-term program, up to 28 days for individuals who are experiencing a psychiatric crisis.

## **Residential Crisis Support**

- Short-term residential program up to 28 days for treatment and support to individuals who are experiencing symptoms of mental illness.

## **Children's Crisis Residence**

- Stabilize psychiatric crisis symptoms and restore the child to a level of functioning and stability that supports their transition to community-based services, supports and resources to prevent or reduce future psychiatric crises.

## **Crisis/Respite Beds**

- A non-licensed 24/7 residential program intended for individuals who have a mental health diagnosis and are experiencing challenges in daily life that create risk for an escalation of symptoms that cannot be managed in the person's home and community environment without onsite supports.



# **Residential Services**

# Residential Services

Provided to maximize access to housing opportunities, particularly for persons with histories of repeated psychiatric hospitalizations, homelessness, involvement with the criminal justice system, and co-occurring substance use. They are also provided to persons leaving adult homes and to persons receiving court-ordered Assisted Outpatient Treatment. Residential services are also offered to children to provide short-term residential assessment, treatment, and aftercare planning.



# Residential Services

**Treatment Programs** - Licensed residential treatment programs in congregate, apartment and single room residences where on-site interventions are goal-oriented, intensive, and usually of limited duration.

- **Children & Youth Community Residence** - These provide a supervised, therapeutic environment for six to eight children or adolescents, between the ages of 5 and 18 years.
- **Apartment Treatment** - An apartment-based residential program which focuses on interventions necessary to address the specific functional and behavioral deficits which prevent residents from accessing generic housing.
- **Congregate/Treatment** - A group-living designed residential program which focuses on interventions necessary to address the specific functional and behavioral deficits which prevent residents from accessing generic housing. Staff is on-site 24 hours/day.
- **SRO Community Residence** - The single room occupancy residence which provides long-term housing where residents can access the support services they require to live successfully in the community and to eventually move to other residential settings.
- **Community Residence for Eating Disorder Integrated Treatment Program** – Also known as ‘CREDIT,’ this treatment is a subclass of community residence program for either children and adolescents ages 12-18 or for adults over age 18 who have been diagnosed with an eating disorder, whose individual treatment issues preclude family settings or other less restrictive alternatives.

# Residential Services

**Support Programs** - Licensed residential support programs in congregate, apartment and single room residences where limited on-site assistance is provided, consistent with the resident's desire, tolerance and capacity to participate in services.

- **Apartment/Support** - An apartment-based residential program which provides support designed to improve or maintain an individual's ability to live as independently as possible, and eventually access generic housing.
- **Congregate/Support** - A single-site residential program which provides support designed to improve or maintain an individual's ability to live as independently as possible and eventually access generic housing.

# Residential Services

**Unlicensed Housing** - Long term or permanent housing in a setting where residents can access the support services they require to live successfully in the community.

- **Supportive Housing** - the program assists individuals in locating and securing housing of their choice and in accessing the supports necessary to live successfully in the community.
- **Supportive/Single Room Occupancy** - A single-room occupancy residence which provides long term or permanent housing in a setting where residents can access the support services they require to live successfully in the community.

# **Hospital-based Emergency and Inpatient Services**

# Hospital-based Emergency and Inpatient

Provide stabilization and intensive treatment and rehabilitation with 24-hour care in a controlled environment. They are the programs of choice only when the required services and supports cannot be delivered in community settings.



# Hospital-based Emergency & Inpatient

- **Comprehensive Psychiatric Emergency Programs** - a licensed, hospital-based psychiatric emergency program.
- **Inpatient Psychiatric Unit of a General Hospital** - a licensed, 24-hour inpatient treatment program, that is jointly licensed by the New York State Office of Mental Health and the New York State Department of Health and operated in a medical hospital.
- **Private Psychiatric Hospital** - a licensed, 24-hour inpatient treatment program that is licensed by the New York State Office of Mental Health.
- **State Psychiatric Center Inpatient** – a 24-hour psychiatric inpatient treatment program that is operated by the New York State Office of Mental Health.



# Inpatient Services

- **Residential Treatment Facility** - Provides fully-integrated mental health treatment services to seriously emotionally disturbed children and youth between the ages of five and 21 years of age. These services are provided in facilities certified by both OMH and the Joint Commission on the Accreditation of Health Care Organizations or Council on Accreditation. These facilities are less intensively staffed than inpatient units but provide a much higher level of services and staffing than community residences, Office of Children and Family Services group homes, and/or child-care institutions.



Office of  
Mental Health

# Budget Investments in Mental Health



# Mental Health Investments from the Previous Budget

## Prevention Services

- ✓ Increase School-based Clinics
- ✓ Including increasing Medicaid rate & Commercial Insurance coverage at the increased rate
- ✓ Expansion of Healthy Steps
- ✓ New Resources to expand Suicide Prevention programs for high-risk youth
- ✓ Expansion of Individual Placements and Supports (IPS)

## Community Access

- ✓ 26 New Certified Community Behavioral Health Centers (CCBHC), tripling the capacity
- ✓ Expansion of Article 31 Mental Health Clinics
- ✓ Expansion of Home-based Crisis Intervention for youth
- ✓ 12 New Comprehensive Psychiatric Emergency Programs
- ✓ 42 New Assertive Community Treatment (ACT) teams
- ✓ Expansion of Intensive and Sustained Engagement Team (INSET) program
- ✓ Funding for Eating Disorders

## Highest Need Individuals

- ✓ 150 State inpatient beds
- ✓ New Inpatient and ER Discharge Protocols and Responsibilities
- ✓ 3,500 new Housing Units
- ✓ Eight Additional SOS teams
- ✓ 50 new Critical Time Intervention (CTI) teams including Medicaid and insurance coverage
- ✓ Expansion of High-Fidelity Wrap Around Services for children and families
- ✓ Increase Health Home Plus capacity for high need individuals
- ✓ Commercial and Medicaid payment for all crisis services and intensive wrap around services



NEW  
YORK  
STATE

Office of  
Mental Health

# Mental Health Investments 2024-2025

\$33M

Criminal  
Justice-related  
Programs

\$45M

Youth and  
School-Based  
Services

\$43M

Supportive  
Housing Units



# Resources

New York State Office of Mental Health: [www.omh.ny.gov](http://www.omh.ny.gov)

OMH Suicide Prevention Center of NY: <https://www.preventsuicideny.org/>

Mental Health Resources During an Emergency:  
[https://omh.ny.gov/omhweb/disaster\\_resources/emergency-mental-health-resources.html](https://omh.ny.gov/omhweb/disaster_resources/emergency-mental-health-resources.html)



# Office of Mental Health

Contact the OMH Long Island Field Office with any questions  
(631) 761-2508

[LongIslandFieldOffice@omh.ny.gov](mailto:LongIslandFieldOffice@omh.ny.gov)

# • Nassau University Ambulatory Behavioral Health Clinic

- Newly designed Clinic located on the ground floor of NUMC, provides a variety of outpatient mental health services for adult, couples and families with a focus on medication management.
- Treatment for individuals throughout their recovery process.
- Open Access with next day appointments available for Social Work with quick access to Psychiatry .
- Social Determinants are a core focus of the care we provide; support groups, on site case management, Housing referrals with a focus on addressing core barriers which interfere with the recovery process.
- **Contact Information:** Referrals: Phone: (516)-572-6822
  - **Open Access** Joanne John (516)-572-5889



**Office of  
Mental Health**



**Office of Addiction  
Services and Supports**

# FCA's Integrated Clinic

- Target Populations:
  - OASAS **Outpatient SUD Program**- Adolescents 13+ and Adults 18+ struggling with SUD and/or significant others impacted
    - **Adolescent Endorsement** to provide SUD treatment to 13–17-year-olds utilizing 7 Challenges EBI
    - **Integrated License** to treat and address co-occurring SUD and MH
  - OASAS **Problem Gambling Designation** to provide treatment for those experiencing problem gambling issues
  - OMH **Mental Health Outpatient Treatment and Rehabilitative Services (MHOTRS) Program**- Adults 18+ with Mental Health diagnosis
    - Children services coming in 2025
- Services Offered:
  - Screening and Assessments for Substance Use, Mental Health or Gambling related issues
  - Individual, group, and significant other/family counseling (English and Spanish)
  - 24/7 Crisis services
  - Care Coordination services to assist with barriers to treatment
  - Peer Support Services (CRPA and Peer Specialist) for outreach, engagement, and recovery support
  - DWI assessments and specialized group education
  - Psychiatric Rehabilitation services
  - Telepsychiatry evaluation and medication management
  - Low-threshold Buprenorphine Treatment- **same day access**
  - Withdrawal management for mild-moderate withdrawal symptoms
  - Medication Assisted Treatment (MAT) and Long Acting Injectables (LAI)
  - Physical Health services including screening & monitoring services and referral for specialty care
  - Smoking cessation
  - Food pantry available



**Office of  
Mental Health**



**Office of Addiction  
Services and Supports**



# FCA's Integrated Clinic

## Locations & Hours of Operation

Hicksville: 180 S. Broadway 2nd Fl.

Monday-Thursday 9am-9pm

Friday 9am-5pm

Saturday 9am-1pm

Hempstead: 126 N. Franklin St.

Monday-Thursday 9am-8pm

Friday 9am-5pm

Saturday CLOSED

## Contact Information:

Nick DiPietro, Clinic Director

**[NDipietro@fcali.org](mailto:NDipietro@fcali.org)**

Hicksville: (516) 935-6858 x4214

Hempstead: (516) 486-7200 x5214



**Office of  
Mental Health**



**Office of Addiction  
Services and Supports**

# Hispanic Counseling Center Domestic Violence Batterer's Intervention Program (DV Program)

Target Population: Adults who have been referred by court, child welfare agencies, and other sources due to charges stemming from domestic violence and child abuse.

Program Goals: To educate the perpetrators on legal implications and the effect of violence on family members.

Services Offered:

- Twenty six (26) weeks psychoeducational program.
- Individual screenings for mental health issues and substance use issues, as needed.
- Links and referrals to community resources and other qualified health professionals.

Hours of Operation: Monday – Thursday 9am-8pm and Friday 9am-4pm

Contact Information: Peter Danaher, Counselor, (516) 538-2613 x 297

*All services are bilingual (English and Spanish) and confidential.*



**Office of  
Mental Health**



**Office of Addiction  
Services and Supports**

- **Formerly known as Long Island FQHC**
- **Target Population:** Available to everyone. We accept Medicaid, Medicare, Commercial Insurance, Self-pay (access to sliding fee scale)
- **Services Offered:** Primary Care, Pediatrics, OB/GYN, Dental, Mental Health, Care Coordination, Optometry, Podiatry, STD Services, Nutrition, WIC, School Based Health, Mobile Coach
- **New Programs:**
  - Perinatal and Infant Community Health Collaborative (PICHC) NYSDOH funded program to improve perinatal and infant health outcomes including preterm birth, low birth weight, infant mortality and maternal mortality.
  - Hempstead location has moved to 619 Fulton Ave
  - Terra Firma – program for unaccompanied immigrant children & families that integrates legal, medical, and behavioral health services
  - Baldwin SBHC – expected to open Fall 2024
- **Locations:** Elmont, Freeport, Hempstead, Roosevelt, Oceanside, Westbury,  
SBHC - Freeport, Roosevelt, & Westbury High Schools
- **Hours of Operation:** Monday to Thursday 8am-8pm, Fridays 8am-6pm, Saturdays 9am-1pm
- **Contact Information:** (516) 296 -3742, [www.harmonyhealthcareli.org](http://www.harmonyhealthcareli.org)



**Office of  
Mental Health**



**Office of Addiction  
Services and Supports**

South Shore Guidance Center  
Certified Community Behavioral Health Clinic  
(CCBHC)

**Target Population:** Children, Adolescents, Adults with Mental Illness, Serious Emotional Disturbance, Substance Use Disorder

**Services Offered:** Crisis Services (including 24 hour mobile crisis services), Outpatient Mental Health and Substance Use Services, Screening, Diagnosis and Risk Assessment, Person- and Family-Centered Treatment Planning, Peer Support Services, Outpatient Primary Care Screening and Monitoring, Community-Based Mental Health Care for Veterans, Targeted Care Management, Psychiatric Rehabilitation Services

**Hours of Operation:** Mon-Thursday 9am-9pm, Fri, Sat 9am-5pm; Sun by Appointment.

**Contact Information:** (516) 868-3030  
Matt McCluskey, MS Ed., CRC  
Sr. Director of Administration and CCBHC  
matt.mccluskey@ssgcli.org

# **Nassau County Addiction Services**

**Stephanie Tighe**

**Regional Coordinator  
NYS-OASAS Long Island Regional Office**



**Office of  
Mental Health**



**Office of Addiction  
Services and Supports**

# OASAS Services

- Prevention
- Gambling Prevention
- Harm Reduction
- SUD Treatment
- Gambling Treatment
- Recovery Supports



# Prevention

## **Evidence-Based Program and Practices (EBPs)**

- Educational Curriculum offered to youth, parents, special populations or community members
- Environmental Strategies (provided in the community often youth led and driven)
- Early Interventions for substance users (screening tools to determine risk early)

## **Prevention Counseling**

- Brief counseling and interventions to prevent, delay, or reduce substance use, problem gambling, and the negative consequences caused by these behaviors
- Includes screening and assessment and referral of individuals to the appropriate treatment or support services

## **Community Coalitions**

- Engage in environmental strategies to change community-wide norms and policies
- Focus on shifting the substance use culture of a community towards healthier norms and expectations
- Long Island Prevention Resource Center: [www.liprc.org](http://www.liprc.org)

## **Problem Gambling Resources**

- Long Island PGRC: <https://nyproblemgamblinghelp.org/long-island/>

# Harm Reduction

## Harm Reduction – Definition

- A set of practical strategies and ideas aimed at reducing negative consequences associated of substance use

## OASAS Division of Harm Reduction

- Access to Naloxone
- Access to Fentanyl Test Strips
- Harm reduction initiatives could include
  - Investment in safety kits and resources to prevent individuals from overdosing
- Public Awareness Campaigns to prevent overdoses in public setting
- Creating and implementing a program providing medication for addiction treatment services to uninsured
- Expanding access to sterile syringes



**Office of  
Mental Health**



**Office of Addiction  
Services and Supports**



# Overdose Prevention

<https://oasas.ny.gov/naloxone-administration-and-availability-oasas-settings>



- Access and education of Naloxone should be provided to all patients, clients and family and anyone utilizing illicit substances.
- All OASAS services should train staff, clients and significant others and provide access to the naloxone.
- Good Samaritan Law offers protection to all individuals.

[https://www.health.ny.gov/diseases/aids/general/opioid\\_overdose\\_prevention/good\\_samaritan\\_law.htm](https://www.health.ny.gov/diseases/aids/general/opioid_overdose_prevention/good_samaritan_law.htm)



Order Naloxone/Fentanyl Test Strips  
<https://oasas.ny.gov/harm-reduction>

# Treatment Services

Terms you might be introduced to when seeking appropriate treatment for you or a loved one:

- Withdrawal and Stabilization Services (Crisis Detoxification)
- Inpatient Rehabilitation Programs
- Residential Treatment Programs
- Comprehensive Outpatient Programs (COP)
- Opioid Treatment Programs (OTP)
- Outpatient Rehabilitation Programs
- Outpatient Clinics
- Integrated Outpatient Services (IOS)
- Outpatient Gambling Services



**Office of  
Mental Health**



**Office of Addiction  
Services and Supports**

# Withdrawal and Stabilization Services

Withdrawal and Stabilization Services (Crisis Detoxification): withdrawal and stabilization services manage the treatment of alcohol and/or substance withdrawal as well as acute disorders associated with alcohol and/or substance use, resulting in a referral for continued care.

Throughout the continuum of treatment, people can receive services for mild to moderate withdrawal through Medication for Addiction Treatment (MAT)



# Inpatient Rehabilitation

Inpatient services provide a safe and supportive setting for individuals who have stabilized in their withdrawal symptoms but where other factors indicate the need for longer-term 24-hour, 7-day a-week care.



# Residential Services

Part 820 (Previously 819)

- OASAS-certified providers of residential programs that provide medical and clinical services, nourishing meals, limited transportation, support groups, and referrals.
- **Stabilization**
  - 24/7/365 Stabilization Element for Mild to Moderate Withdrawal
- **Rehabilitation**
  - Clinical and Behavioral services to assist with sustained recovery
- **Reintegration Services**
  - Longer term assistance with connecting to housing and additional resources for transition to community living.



**Office of  
Mental Health**



**Office of Addiction  
Services and Supports**

# Residential Rehabilitation Services for Youth

These are short and long-term inpatient programs for youth with substance use and co-occurring disorders. These programs have an enhanced staffing pattern that better meets the developmental needs of adolescents. This level of care can accommodate adolescents less than 21 years of age.



# Opioid Treatment Programs

Opioid Treatment Centers (OTP) are OASAS-certified sites where medication to treat opioid use disorder is administered.

- Medications can include methadone, buprenorphine, and suboxone.
- These facilities also offer counseling and educational services.
- In most cases, patients receiving services at an OTP clinic are provided treatment over a lifetime, similar to management of chronic physical ailments.



**Office of  
Mental Health**



**Office of Addiction  
Services and Supports**

# Outpatient Rehabilitation Service

Services designed to assist individuals with more chronic conditions, who are typically scheduled to attend the outpatient rehabilitation program three to five days per week for at least two hours per day.





# Outpatient Substance Use Disorder Services

OASAS-certified outpatient services have multi-disciplinary teams which include medical staff and a physician who serves as medical director.

These programs provide treatment services to individuals who suffer from substance use disorders and their family members and/or significant others.

*Specialized clinics offer services such as:*  
Intensive Outpatient Program (IOP)  
Adolescents, Women, Families & LGBTQIA



**Office of  
Mental Health**



**Office of Addiction  
Services and Supports**

# Integrated Outpatient Services (IOS)

OASAS, OMH, and DOH have partnered in the development, implementation and oversight of the “Integrated Licensure Project”. This collaboration resulted in the development of clinical and physical plant standards, staffing requirements, and a single application and review process - all with the goal to reduce the administrative burden on providers and to improve the quality of care provided to consumers with multiple needs by improving the overall coordination and accessibility of care.



# Comprehensive Outpatient Program

Comprehensive Integrated Outpatient Treatment Program has co-located OASAS Part 822 Outpatient Services and OASAS Part 822 Opioid Treatment Programs (OTP) services that are merged under one operating certificate and makes all services available to all enrolled patients (other than methadone). Both OTP and Outpatient services should be physically merged.



# Outpatient Gambling Services

Individuals with problem gambling or gambling disorder respond well to evidenced-based cognitive behavioral therapy that focuses specifically on cognitions that fuel gambling behavior. In addition, treatment can involve building on skills to manage personal and environmental triggers, such as an advertisement or a memory.



# Medication for Addiction Treatment (MAT)

Research shows that combining treatment medications, where available, with behavioral therapy is the best way to ensure success for most patients. Treatment approaches must be tailored to address each patient's drug abuse patterns and drug-related medical, psychiatric, and social problems.

Integration of MAT in ALL TREATMENT SETTINGS:

- **Access to MAT:** must be offered to clients regardless of client ability or willingness to engage in psychosocial treatment.
- **Stabilization:** Patient comfort



**Office of  
Mental Health**



**Office of Addiction  
Services and Supports**

# Recovery Support Services

Service with the mission of supporting individuals through their recovery process:

These services include:

- Regional Addiction Resource Centers
- Problem Gambling Resource Centers
- Recovery Centers
- Clubhouses for Youth
- Family Support Navigators
- Peer Engagement Specialists



**Office of  
Mental Health**



**Office of Addiction  
Services and Supports**

# Addiction Resource Center

The Regional Addiction Resource Centers (RARC) assist people, families, and communities in accessing local resources for anyone at risk of, or experiencing, problems related to alcohol, substance use or gambling. The RARC helps identify local services and resources for prevention, treatment and recovery. The RARC can also organize community awareness events based on community requests.

A RARC can also connect you to additional supports such as Family Support Navigators, medication drop boxes, Peer Engagement Specialists, 12 step groups, Narcan/naloxone training, clubhouses and local events.

**Long Island Addiction Resource Center**

[www.longislandaddictionresourcecenter.org](http://www.longislandaddictionresourcecenter.org)

(631) 288-9505



**Office of  
Mental Health**



**Office of Addiction  
Services and Supports**

# Problem Gambling Resource Center

Services that assist individuals who are affected by problem and pathological gambling including family members and/or significant others.

Provides:

- Group and individual counseling
- Education about
- Orientation to and opportunity to participate in problem gambling awareness and relapse prevention
- Self-help groups and family treatment.

In addition, financial counseling is provided either directly or through outside referral.

**New York Council on Problem Gambling**

<https://nyproblemgamblinghelp.org/long-island/>

516-226-8342



**Office of  
Mental Health**



**Office of Addiction  
Services and Supports**



# Recovery Center

- The centers provide health, wellness and other critical supports to people and families who are recovering from a substance use disorder or are seeking recovery services for a family member or friend.
- They provide a community-based, non-clinical setting that is safe, welcoming and alcohol/drug-free for any member of the community.
- The centers promote long-term recovery through skill-building, recreation, employment readiness and the opportunity to connect with other community services and peers facing similar challenges.

**Transformation, Healing, Recovery, Inspiration, Validation and Empowerment (THRIVE)**

<https://www.thrivelife.org/>

(516) 765-7600



**Office of  
Mental Health**



**Office of Addiction  
Services and Supports**

# Youth Clubhouse

Clubhouses provide a restorative, non-clinical environment for young people whose lives have been disrupted by addiction to connect with others in recovery. Clubhouses are built on a core of peer-driven supports and services that help young people progress in their recovery, by encouraging a drug-free lifestyle.

Clubhouses for Youth cater to ages 12 to 17.

Clubhouses for Young Adults cater to ages 18 to 21.

**The Living Room**

(917) 596-0784



**Office of  
Mental Health**



**Office of Addiction  
Services and Supports**

# Family Support Navigators (FSN)

- The primary goal of the Family Support Navigator is to assist families and individuals with gaining an increased understanding of the progression of addiction and how to navigate insurance and treatment systems.
- Family Support Navigators develop relationships with local substance use prevention, treatment, and recovery services; managed care organizations; area substance use disorder councils; and community stakeholders to assist families with accessing treatment and support services.

## **Family & Children's Association**

(516) 592-7385

## **New Horizon Counseling Center, Inc.**

(516) 872-9698

## **Thomas' Hope Foundation, Inc.**

(631) 333-0871



**Office of  
Mental Health**



**Office of Addiction  
Services and Supports**

# Peer Engagement Specialist Services (PES)

- The Peer Engagement Specialists use their “lived experience” to engage people on the street and in hospital emergency rooms, developing brief person-centered service plans, providing referrals and linkages to needed services.
- PES provide support, encouragement and guidance in linking persons to appropriate services.
- PES are particularly effective with people who have been reluctant to participate in traditional behavioral health services.
- PES are made available in ALL OASAS TREATMENT SETTINGS

**Oceanside Counseling Center**

(516) 766-6283

**Thomas' Hope Foundation, Inc.**

(631) 333-0871



**Office of  
Mental Health**



**Office of Addiction  
Services and Supports**

# Outreach and Engagement Services (OES)

OES services are OASAS Treatment providers focused on engaging people in their communities by offering mobile clinical services as well as linking people to other appropriate levels of care.

OES providers target un/underserved areas and expand access to telepractice, substance use treatment services, including linkage to Medication for Addiction Treatment, as well as peer outreach and engagement within the community.

## CN Guidance & Counseling Services

<https://centralnassau.org/>

516-822-4060



**Office of  
Mental Health**



**Office of Addiction  
Services and Supports**

# OASAS Resources

**New York State HOPEline: 1-877-846-7369 or text HOPENY to (467369)**

**Community Health Access to Addiction and Mental Healthcare Project (CHAMP): Helpline: (888) 614-5400**

To access the OASAS Patient Advocacy services, call 1-800-553-5790

Link to NYS OASAS: <https://oasas.ny.gov/>

Link to Talk to Prevent: <https://oasas.ny.gov/prevention/conversational-resources>

Link to Combat Heroin: <https://oasas.ny.gov/combat-addiction>

Information on Good Samaritan Law: <https://www.health.ny.gov/publications/0139.pdf>

OASAS Provider Directory: <https://webapps.oasas.ny.gov/providerDirectory/>

Contact the OASAS Long Island Regional Office: (631) 434-7263



# EAC Network

Established in 1969 as a small alternative educational program for adolescents in Port Washington, EAC Network has grown to become one of the premier non-profit agencies in the metropolitan region. Its mission is to respond to human needs with programs and services falling into five categories: Children & Youth Services, Family & Community Services, Senior & Nutrition Services, Vocational Services and Behavioral Health & Criminal Justice.

- New Path Treatment Center (OASAS licensed outpatient clinic)
- Health Home Care Coordination



# New Path Treatment Center

## Target Population/Services Offered

The EAC Network New Path Treatment Center is an OASAS licensed substance use treatment program located in Hempstead.

- Adults aged 18 and up
- Co-occurring disorders
- Medication Management
- Medication Assisted Treatment (MAT)
- Medical Screenings/Evaluations
- Peer Support (CRPA) services
- Family Support services





# New Path Treatment Center

## Target Population/Services Offered

New Path facilitates the following groups:

- Motivation to Change
- Relapse Prevention
- Moral Reconciliation Therapy
- Power & Control
- DWI
- Anger Management
- Coping Skills
- Parenting Skills Training
- Intensive Outpatient Program (IOP)



# New Path Treatment Center

## Hours of Operation

Monday: 8:30am-8pm

Tuesday: 8:30am-8pm

Wednesday: 8:30am-8pm

Thursday: 8:30am-8pm

Friday: 8:30am-4:30pm

Saturday: 8:30am-11:30am

## Contact Information

**Sherri M. Flournoy, LCSWR**

Program Director

New Path Treatment Center

175 Fulton Ave, Suite 403

Hempstead, NY 11550

(516) 486-3222 ext.118



**Office of  
Mental Health**



**Office of Addiction  
Services and Supports**

# Health Home Care Coordination

## Target Population/Services Offered

- Medicaid enrolled/eligible
- Two chronic health conditions (Medical, MH, SU)
- SMI or HIV/AIDS – no need for second condition
- Coordination of care between members/providers
- Health Home Plus for individuals with SMI



**Office of  
Mental Health**



**Office of Addiction  
Services and Supports**

# Health Home Care Coordination

## Hours of Operation

Monday: 8am-4pm

Tuesday: 8am-4pm

Wednesday: 8am-4pm

Thursday: 8am-4pm

Friday: 8am-4pm

## Contact Information

**Renee Tammaro**

Program Director

175 Fulton Ave, Suite 405

Hempstead, NY 11550

(646) 355-5318



**Office of  
Mental Health**



**Office of Addiction  
Services and Supports**

# EAC Network

Thank you!

**Lisa Newman, LCSW**

Senior Director of Behavioral  
Health Services

Phone: (631) 648-7100 ext. 220

Cell: (631) 647-0295

[Lisa.Newman@eac-network.org](mailto:Lisa.Newman@eac-network.org)



**Office of  
Mental Health**



**Office of Addiction  
Services and Supports**

# Nassau County Opioid Treatment Program

NUMC, 2201 Hempstead Turnpike, Building  
K

East Meadow, NY 11554

Presenter: Jeannine Henn,  
LCSW-R

The Mission of NC Opioid Treatment Program is to treat individuals suffering from an Opiate Use Disorder with a comprehensive, culturally competent bio-psycho-social approach to assist the chemically dependent persons to cease the use of illicit and/or controlled substances and move towards leading a healthy and productive life.

The Goal of this program is to utilize intensive, inter-disciplinary services and individualized treatment planning to successfully intervene with the chemically dependent client.

The Objectives include but are not limited to:

- ◆ Medical intervention with physically compromised Hepatitis C and HIV population,
- ◆ Psychiatric stabilization of those clients with dual diagnoses
- ◆ To provide medication for addiction treatment and assign clients to appropriate treatment track to achieve optimal client directed outcomes
- ◆ Supply Person Centered addiction specific recovery counseling.



Office of  
Mental Health



Office of Addiction  
Services and Supports

# DIAGNOSING OPIOID USE DISORDER

The program uses the DSM-V as the standard for diagnoses of any client seeking maintenance therapy for Opioid Use Disorder

- Diagnosis depends on clusters of behaviors and physiologic effects that occur within a time frame of one (1) year:
  - A diagnosis of Severe and Moderate Use always takes precedence over Mild Use Disorder
- Specific to the client who has developed tolerance or is exhibiting withdrawal symptoms (physiologic dependence)



**Office of  
Mental Health**



**Office of Addiction  
Services and Supports**

# Who could be considered for referral to an 822 Opioid Treatment Program?

Adults ages 18 and older.

Clients in need of Medication for Opioid use Disorder

Clients at increased risk for overdose

Clients suspected of diversion of medication/prescription

Clients recently incarcerated, released and struggling with OUD



**Office of  
Mental Health**



**Office of Addiction  
Services and Supports**



Program capacity to treat over 600 clients with Opiate Substance Use Disorders. Medication for Opioid Use Disorder (MOUD) has proven to be an effective medical treatment for opioid addiction. It improves clients' health, education, family relationships and self-esteem while increasing clients' prospects for gainful employment.

## Services:

- ★ Counseling
- ★ Nursing services
- ★ Psychiatric Services
- ★ Medical assessment



- ★ HIV/AIDS testing and education
- ★ HEP C testing and education
- ★ Referral services
- ★ After care support

- ★ Coordinate care with Court Systems, DSS, and Case Management, and Community Based Organizations



**Office of  
Mental Health**



**Office of Addiction  
Services and Supports**

# NC OTP – TREATMENT TRACKS



Treatment Tracks Include:

- Methadone Treatment Track
- Suboxone Treatment Track (opened in 2010)
- Long Acting Naltrexone Treatment Track (opened in 2015)

\*\*\* ALL tracks adhere to OASAS 822 Regulations \*\*\*



**Office of  
Mental Health**



**Office of Addiction  
Services and Supports**



# YES Community Counseling Center

Serving the Needs of Youth, Adults, and Families



Group, Individual, &  
Family Counseling  
Services

Training and Professional  
Development

Addition Services &  
Supports

Family & Community  
Outreach



Parenting Support  
Groups

Young Adult  
Program-BRIDGES

Narcan Trainings

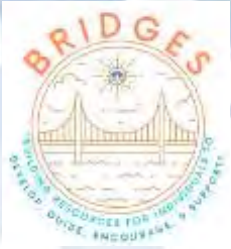
Prevention and Early  
Intervention Programs  
for elementary, middle,  
and high school students

Youth and Family  
Counseling

Commerce Plaza-The  
Children's Business  
Center

Community  
Coalitions

WISH Program  
Abuse and Domestic  
Violence Counseling



# BRIDGES



Building Resources for Individuals to  
Develop, Guide, Encourage, and Support

A Project of YES Community Counseling Center

- Target Population: 15 - 25 year olds living with substance use issues and substance use and mental health issues.
- Services Offered: Screening, assessment, early intervention, short term individual and family counseling, recovery support, medication evaluation and management, referral & wraparound services.
- Hours of Operation:
  - Monday - Thursday: 8:30am to 5:00pm
  - Friday: 9:00am to 2:00pm
  - Evening hours: by appointment
- Contact Information:
  - [bridges@yesccc.org](mailto:bridges@yesccc.org)
  - 516.719.0313 x 218
  - Grant Coordinator: Caryn Sawyer, Psy.D.
  - Youth Support Coordinator: Michelle Lavoie, LCSW-R



@bridges.yes



Office of  
Mental Health



Office of Addiction  
Services and Supports



# TRAINING AND EDUCATION

A Project of YES Community Counseling Center



YES is a Licensed Continuing Education Provider/OASAS certified training provider offering trainings year round for Professionals, Schools, Parents, Businesses and Community Members.

## Evidenced Based Trainings for Professionals:

- Teen Intervene
- Brief Alcohol Screening & Intervention for College Students (BASICS)
- Cannabis Assessment & Screening Intervention for College Students (CASICS)
- Motivational Interviewing
- Defining Professional Boundaries for Mental Health Professionals
- Child Abuse Training for Mental Health Professionals
- Active Parenting - Train the Trainer

## For Community Members:

- Opioid Education & Naloxone Training
- Mental Health Matters: Connecting Parental MH with Youth MH
- Effective Communication with Children/Teens
- College Transition & Risks of Substance Misuse
- Dangers of Vaping
- Impact of Social Media on Mental Health
- Active Parenting
- More....



**Office of  
Mental Health**



**Office of Addiction  
Services and Supports**



## The School Outreach & Support Program

### SOS

The School Outreach & Support Program (SOS) is a grant funded through Nassau County Office of Mental Health, Chemical Dependency and Developmental Disabilities Services.

- This community school partnership provides students and families with a full range of services and seamless access to community-based resources beyond school hours and the school calendar year.
- Full-time Collaborative Care Coordinators (licensed professionals) are placed within four of our local school districts during the school day, after school hours, and also at the agency in the evening, providing seamless access to community-based services.
- Services Provided:
  - Individual, Group, and Family Counseling
  - Comprehensive, evidence-based prevention programs (in small groups, 1:1, or as a classroom push in's)
  - Screening and assessment for substance misuse and co-occurring mental health disorders
  - Provide referrals and resources to appropriate levels of care



**Office of  
Mental Health**



**Office of Addiction  
Services and Supports**

# YES Community Counseling Center



Serving the Needs of Youth, Adults and Families

## Evidence-Based Intervention & Prevention Programming

Too Good for Drugs - Preventure - Teen Intervene Sport Program - NOT Program - BASICS/CASICS - Red Watch Band

## Therapeutic Services

Screening and Assessments - Individual Counseling - Family Counseling - Group Counseling - Crisis Intervention

## Case Management

Seamless referrals to services - Career support - Mentoring programs or community service learning projects - Connect to financial/housing resources - Insurance

## Community

Food Pantries - Gift cards - Holiday Assistance and Programs - Family Activities - Community Coalitions

## Programs

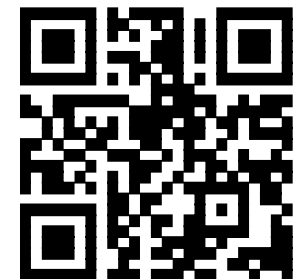
School supplies - YES Youth Ambassador Program - Summer Recreation Programs



**Office of  
Mental Health**



**Office of Addiction  
Services and Supports**



# Mercy Recovery House

Target Population: Males 18 years old and up with a primary diagnosis of Substance Abuse Disorder.

Services Offered: Alcoholism and substance abuse counseling, relapse prevention and education, conflict resolution and anger management, vocational evaluation, education, training, referrals/linkages to medical care, recovery support groups, referrals to legal and financial services.

Hours of Operation: 24 hours a day, 7 days a week, 365 days a year.

Contact Information: 516-977-2050

Presenter: Jennifer O'Connell





# Mercy New Hope

Target Population: Services are for adults 18 years or older with a primary DSM-5 diagnosis of substance use disorder with or without co-occurring mental illness.

Services Offered: Stabilization services in a short-term residential setting for substance abuse. Scope of care includes medical evaluations, psychiatric evaluations, short-term therapy, medication assisted treatment, stabilization counseling, case management, discharge planning, self-help group and individual meetings.

Hours of Operation: The unit operates 24 hours a day, 7 days a week, 365 days a year.

Contact Information: 516-546-7070

Jennifer O'Connell



**Office of  
Mental Health**



**Office of Addiction  
Services and Supports**

# Mercy Hall

Target Population: Women ages 18 and up with a primary diagnosis of Substance Abuse Disorder.

Services Offered: Services offered include Alcoholism and substance abuse counseling, relapse prevention and education, conflict resolution and anger management, vocational evaluation, education, training, referrals/linkages to medical care, recovery support groups, referrals to legal and financial services. The average length of stay ranges from 8-12 months however, this can be individualized based on circumstances and needs.

Hours of Operation: 24 hours a day, 7 days a week, 365 days a year.

Contact Information: 516-868-2244

Jennifer O'Connell



**Office of  
Mental Health**



**Office of Addiction  
Services and Supports**

# Family Peer Support Services (FPS)

- **Target Population:**
  - Parents struggling with a child who has a significant mental/behavioral/physical health concern. ***All services are free for those who meet the eligibility criteria.***
- **Services Offered:**
  - Strengthening the family unit, building coping and communication skills to improve family cohesion, promote empowerment within the family, strengthening and building supports in the child's environment, and CSE representation.
- **Hours of Operation**
  - Monday, Friday 10-6
  - Tuesday, Wednesday, Thursday 10-9
- **Contact Information**
  - Paul Danilack, Supervisor
  - [pdanilack@northshorechildguidance.org](mailto:pdanilack@northshorechildguidance.org)
  - 516-626-1971 ext. 303

Presenter: Paul Danilack



# Coordinated Children's Services Initiative (CCSI)

- **Target Population:**
  - Children 0-21, serious emotional disturbance (SED) diagnosis, multisystem involved.
- **Services Offered:**
  - Intensive case management; coordination of services, referrals.
  - ***All services are free for those who meet the eligibility criteria.***
- **Hours of Operation:**
  - Monday, Friday 10-6
  - Tuesday, Wednesday, Thursday 10-9
- **Contact Information**
  - Paul Danilack, Supervisor
  - [pdanilack@northshorechildguidance.org](mailto:pdanilack@northshorechildguidance.org)
  - 516-626-1971 ext. 303

Presenter: Paul Danilack



**Office of  
Mental Health**



**Office of Addiction  
Services and Supports**

- **Target Population:**
  - Children ages 0-21, SED diagnosis, multi system involved, typical outpatient treatment has been unsuccessful
- **Services Offered:**
  - Individual therapy, family therapy, medication management. All services are offered in the home or preferred community location . ***All services are free for those who meet the eligibility criteria.***
- **Hours of Operation:**
  - Monday, Friday 10-6
  - Tuesday, Wednesday, Thursday 10-9
- **Contact Information:**
  - Paul Danilack, Supervisor
  - [pdanilack@northshorechildguidance.org](mailto:pdanilack@northshorechildguidance.org)
  - 516-626-1971 ext. 303

Presenter: Paul Danilack



Office of  
Mental Health



Office of Addiction  
Services and Supports

# Community Psychiatric Supports & Treatment (CPST)

- Target Population:
  - Children ages 0-21, Medicaid recipients, ***NO DIAGNOSIS NEEDED***
- Services Offered:
  - Intensive interventions, crisis avoidance, intermediate term crisis management, rehabilitative psychoeducation, strengths-based service planning, rehabilitative supports. ***All services are free for those who meet the eligibility criteria.***
- Hours of Operation
  - Monday, Friday 10-6
  - Tuesday, Wednesday, Thursday 10-9
  - Saturday 9-5
- Contact Information
  - Paul Danilack, Supervisor
  - [pdanilack@northshorechildguidance.org](mailto:pdanilack@northshorechildguidance.org)
  - 516-626-1971 x. 303



Office of  
Mental Health



Office of Addiction  
Services and Supports

# Other Licensed Practitioner (OLP)

- Target Population:
  - Children ages 0-21, Medicaid recipients, ***NO DIAGNOSIS NEEDED***
- Services Offered:
  - Individual therapy, family therapy, medication management, crisis intervention services. ***All services are free for those who meet the eligibility criteria.***
- Hours of Operation
  - Monday, Friday 10-6
  - Tuesday, Wednesday, Thursday 10-9
  - Saturday 9-5
- Contact Information
  - Paul Danilack
  - [pdanilack@northshorechildguidance.org](mailto:pdanilack@northshorechildguidance.org)
  - 516-626-1971 ext.303

Presenter: Paul Danilack



# Project Outreach

- Target Population: Substance Use and Mental Health
- Services Offered: Individual, Group, IOP, DBT, Medication Management, Medical Professionals program, and Impaired Drivers Program.
- Hours of Operation: Mon-Thurs 8-9 pm. Friday 8-5 pm.
- Contact Information: 516-481-2890  
600 Hempstead Turnpike, West Hempstead NY 11552

Presenter: Rachel Bloom, LCSW, CASAC



**Office of  
Mental Health**



**Office of Addiction  
Services and Supports**





# LONG ISLAND ADDICTION RESOURCE CENTER

**The Long Island Addiction Resource Center (LIARC)**, promotes easy access to resources for education, prevention, treatment, recovery, and peer services related to substance use disorder and problem gambling throughout **Nassau and Suffolk Counties**.

[www.LongIslandAddictionResourceCenter.org](http://www.LongIslandAddictionResourceCenter.org)

**Contact:** Alana Urbont Marino, *Project Coordinator*  
[alana@hugsinc.org](mailto:alana@hugsinc.org) 631-288-9505



Powered by HUGS, Inc.



**Office of  
Mental Health**



**Office of Addiction  
Services and Supports**

# FCA's THRIVE Services

- **Target Population:**
  - Adults aged 18 and older in recovery, seeking recovery services, curious about recovery and individuals who have a loved one impacted by Substance Use Disorder.
- **Services Offered:**
  - THRIVE Recovery Center:
    - Recovery Coaching
    - Peer support groups and workshops
    - Substance free events including holiday parties, sober super bowl, dances and game nights
  - THRIVE Everywhere:
    - Community-based recovery support services
    - Sober activities and events such as gardening, ice skating, running club, coffee hour, etc
  - THRIVE University
    - Free trainings for working CRPAs in regard to soft skills
    - Coming soon: Free CEUs and internship program to get hours needed to get CRPA Certification
- **Contact Information:**
  - Ryan Kiser, Director Recovery Services
  - 516-246-0705, [RKiser@fcali.org](mailto:RKiser@fcali.org)
  - [www.thrivelive.org](http://www.thrivelive.org)
- **Locations:**
  - 1324 Motor Parkway, Suite 102, Hauppauge, NY
  - 1025 Old Country Road, Suite 400, Westbury, NY
  - 680 Elton Street, Riverhead, NY

Presenter: Jaymie Kahn-Rapp



**Office of  
Mental Health**



**Office of Addiction  
Services and Supports**

# FCA's Sherpa Services

- **Target Population:**
  - Adults aged 18 and older who are at risk of an overdose or individuals who have a loved one at risk of an overdose
- **Services Offered:**
  - **Peer Support:**
    - Support and systems navigation
    - A strategy to begin rebuilding full, healthy lives
    - Connection to treatment, community resources, and harm reduction services
    - Individual and family peer support
    - Narcan training
  - **Care Coordination:**
    - Support with overcoming social determinants of health barriers
- **Contact Information:**
  - Bradley Baer, Sherpa Program Director
  - 516-592-7385, [Bbaer@fcali.org](mailto:Bbaer@fcali.org)

Presenter: Jaymie Kahn-Rapp



**Office of  
Mental Health**



**Office of Addiction  
Services and Supports**

# FCA's Harm Reduction Services

- **Target Population:**  
Adults aged 18 and older who is interested in services, including people who are sexually active and/or use substances
- **Services Offered:**
  - Onsite and mobile HIV, HCV, syphilis, gonorrhea, & chlamydia testing.
  - Navigation for treatment and prevention (PrEP/PEP) services.
  - Safer sex kits (condoms, lubricant, dental dams) and overdose prevention kits (NARCAN, fentanyl & xylazine test strips.)
  - Linkage to substance use and mental health services.
  - Workshops at community-based locations and SUD-related centers to provide education and promote long-term recovery.
  - Linkage to syringe access programs when appropriate.
- **Contact Information:**  
Lenny Spada, Assistant Director  
516-732-3093, [lspada@fcali.org](mailto:lspada@fcali.org)

Presenter: Jaymie Kahn-Rapp



**Office of  
Mental Health**



**Office of Addiction  
Services and Supports**

# SBIRT SERVICES – NY CARES

**New York Communities Advancing Resources, Education, and Support**

Community Based  
SBIRT Outreach Program

A SUD Prevention Model

# SBIRT Community Outreach Program

- Target Population: All Nassau County Residents 12 and up with a special emphasize on the growing central and south American immigrant population
- Community Based SBRIT Services For all Nassau County Residents 12 and up
- Screening, Brief Intervention and Referral to Treatment.
- Referrals to other Community Based Services as needed.
- SBIRT Community Outreach Counselors available to conduct SBIRT services where the client is – i.e., schools, community events, places of worship, community centers
- Funded by SAMHSA Community Outreach SBIRT Grant : NY CARES program is a collaboration with NY OASAS
- Hours of Operation: Monday – Thursday 9am to 8pm
- Friday 9am to 4pm with availability outside of these hours as needed.
- Contact Information:
  - Cindy Wolff
  - [cwolff@tempogroup.org](mailto:cwolff@tempogroup.org)
  - 516-821-2127
  - FWendy Feuer
  - [WFeuer@tempogroup.org](mailto:WFeuer@tempogroup.org)
  - 516-374-3671

Presenters: Wendy Feuer & Samantha Ramos



# **Nassau County Children's Mental Health Services**

**Kathryn Artesani, LMSW  
Nassau County  
Coordinator of Children Mental Health Services**

**516-227-7057**

**[Kathryn.Artesani@hhsnassaucountyny.us](mailto:Kathryn.Artesani@hhsnassaucountyny.us)**



**Office of  
Mental Health**



**Office of Addiction  
Services and Supports**



# Children's SPOA

- **Target Population: Children ages 5 – 21**
  - **Access to In-Home Services:**
    - **Non-Medicaid Care Coordination**
    - **Coordinated Children's Service Initiative (CCSI)**
    - **Clinical Care Coordination Team (CCCT)**
    - **Home Based Empowerment Support Team (Home-BEST)**
    - **Health Homes**
      - **Home and Community Based Services (HCBS)**
    - **Information about HCBS referral process through C-YES**
  - **Access to Out of Home Services:**
    - **Residential Treatment Facility**
    - **Community Residence**
- Presenter: Kathryn Artesani**



**Office of  
Mental Health**



**Office of Addiction  
Services and Supports**



# Children and Family Treatment and Support Services (CFTSS)

- **Target Population: Children and Youth (under age 21) who are covered by Medicaid and have mental health and/or substance use needs**
- **Assist with:**
  - **Identifying mental health and/or substance use needs early**
  - **Providing support in the home and community**
  - **Preventing the need for emergency room visits, hospital stays, or out of home placements**
  - **Services can be provided at home, in the community, or wherever**
  - **children/youth and their families feel comfortable**

**Presenter: Kathryn Artesani**



**Office of  
Mental Health**



**Office of Addiction  
Services and Supports**



**Office for People With  
Developmental Disabilities**

# Youth Assertive Community Treatment - Youth ACT

- **Central Nassau Guidance & Counseling Services**
- **Target Population:**
  - Child must be at least 10 at the time of enrollment and may be served up to the age of 21
  - A determination of Serious Emotional Disturbance (SED)
  - Have continuous high service needs that are not being met in more traditional service settings
  - Child must reside in Nassau County
- **Services Offered: Designed to address the significant needs of children who are at risk of entering, or are returning home from high intensity services, such as inpatient settings or residential services, using a multi-disciplinary team:**
  - Licensed Therapists
  - Psychiatrist
  - Clinical Support Specialist
  - Family Peer Advocate
  - Youth Peer Advocate
  - Team Leader
  - Administrative Support
- **Contact Information:**  
516-822-6111

Presenter: Kathryn Artesani



**Office of  
Mental Health**



**Office of Addiction  
Services and Supports**

# FCA's Family & Community Support Division

- **Programs Located:** 14 Front Street Suite 102 Hempstead NY 11550
- **Parents and Children Together (PACT):** Services are provided to youth, ages 10-21, who are at risk of unprotected sexual activity, early pregnancy as well as pregnant and parenting teens. The PACT program works to provide teens with opportunities for cultural and educational enrichment activities that can support the development of personal and parenting goals. Clients receive short term individual counseling. Youth are supported through advocacy and when needed they are referred for collateral services; linkage to FCA and /or other identified community services.
- **Families Count:** Services are centered around improving the four pillars of communication, mutual respect, encouragement, and problem solving between parents and their children/teenagers. Individual and family mediation services are provided in addition to active parenting workshops.
- **Ladders to Success:** Services prepare identified High School students residing in Hempstead, Roosevelt, Uniondale and Freeport, assistance in Mathematics, Algebra, Reading and English to attain the placement test scores they need to avoid remedial classes and immediately access credit-bearing classes at Nassau Community College and beyond. This will be achieved through mentoring and counseling, tutoring to prepare for the accuplacer test.
- **Program Contact:** Erica Schifano, Assistant Vice President 516-485-4289 Ext. 1223



**Office of  
Mental Health**



**Office of Addiction  
Services and Supports**

# FCA's Family & Community Support Division

- **Programs Located:** 126 N. Franklin Street Hempstead NY 11550
- **The Lynn Vanderhall Nursery Co-Op:** provides support services for families as well as an enriching academic experience for preschoolers. A toddler program is provided for 2-year-olds and pre-k for 3–4-year-old, while their parents are working towards goals to strengthen their family system. The children's program is designed to develop social, physical, and emotional skills, utilizing a bilingual- culturally sensitive curriculum. Referrals accepted.
- **Immigrant Resource Center:** provides services for immigrant and vulnerable families in Nassau County. Helpline counselors provide referrals to food pantries, immigration resources, COVID-19 testing and vaccine advocacy, case management & short-term counseling, with services available in both English and Spanish. Referrals accepted.
- **Program Contact:** Erica Schifano, Assistant Vice President 516-485-4289 Ext. 1223



**Office of  
Mental Health**



**Office of Addiction  
Services and Supports**

# FCA's Family & Community Support Division

- **Programs Located:** Community Based
- **Family Support** offers families whose children are at risk of foster care placement, support, and in-home parent teaching. A family support worker provides coaching and mentoring as they teach the core- life skills to guide families in improving their situation and enhancing the well-being of each family member. Case management services include advocacy, educational advocacy, linkage to other community resources, and support in making and keeping appointments, financial counseling, and household management. All referrals are channeled through the NCDSS, and families must have an active case with foster care, Preventive Services or Child Protective Services. Workers provide services in the family's home.
- **Family First** offers bilingual clinical services to the North Shore and Great Neck School Districts to help meet the social emotional learning of students where English is not their first language; clinicians work directly with students and their families. Family First understands the importance of culturally sensitive professional services during difficult life transitions. Clinicians are based out of Great Neck & North Shore School Districts.
- **Program Contact:** Erica Schifano, Assistant Vice President 516-485-4289 Ext. 1223



**Office of  
Mental Health**



**Office of Addiction  
Services and Supports**

# Community Liaison Specialist Psychiatric Emergency Department Inpatient Child and Adolescent Unit

**Target Population:** Families of children and adults experiencing a psychiatric crisis at Nassau University Medical Center

**Services Offered:**

- Assessment of the needs of patients and families
- Coordination with psychiatric teams regarding patient needs
- Education about Nassau County programs and services
- Referrals to programs
- Support to patients and families

**Hours of Operation:**

- Monday-Friday 8:30AM-4:15PM

**Contact Information:** Anastasia Sperounis

- **Phone:** (516) 572-4775
- **Email:** asperoun@numc.edu

# Long Island Advocacy Center

- Target Population: Students up to age 21.
- Services Offered: Educational Advocacy and legal representation for school suspension issues.
- Hours of Operation: Monday- Friday, 9-5.
- Contact Information:  
online intake at [www.theliac.org](http://www.theliac.org)

Presenter: Eilleen Buckley & Mindy Turansky



**Office of  
Mental Health**



**Office of Addiction  
Services and Supports**

# FCA's Children's Mental Health Services

- Target Population:
  - We serve children ages 5-21 and their families in Nassau County and portions of Western Suffolk.
- Services Offered:
  - **CFTSS** – An array of services available to any child who is Medicaid eligible and identified as having a behavioral health need. Services include evaluation, therapy, counseling, family peer support and skill building
  - **Family Center Nassau** - Provide family peer advocacy and respite services to children living in Nassau County who are at risk for or have a mental health diagnosis.
  - **HCBS Waiver** - Services are delivered in the home and community to children who are Medicaid eligible, enrolled in the Health Home Case Management program and in need of more intensive services. Services offered are community family and advocacy support services.
  - Hours of Operation: Monday to Friday, hours are flexible to meet the needs of the families.
- Contact Information:
  - Jessica Fishstein, LMSW, Director of Services
  - [jfishstein@fcali.org](mailto:jfishstein@fcali.org)
  - 516-485-5976 ext: 3258

Presenter: Shari Lubeck



**Office of  
Mental Health**



**Office of Addiction  
Services and Supports**



# FCA's Health Home Program

- Target Population:
  - Children and youth ages 5 to 21 years old who are diagnosed with a SED diagnosis (serious emotional disturbance), two chronic conditions, or complex trauma and who have active Medicaid. We serve Nassau County and portions of Western Suffolk.
  - Adults ages 21 and older who are diagnosed with two chronic conditions or serious mental illness (SMI) only
- Services Offered: linkage to services and supports/case management
- Hours of Operation: Monday to Friday, hours are flexible to meet the needs of the families.
- Contact Information:
  - Christine LaRose, LMSW, Program Director
  - [clarose@fcali.org](mailto:clarose@fcali.org)
  - 516-485-5976 ext: 3273

Presenter: Shari Lubeck



**Office of  
Mental Health**



**Office of Addiction  
Services and Supports**

# Nassau County Specialty Services



**Office of  
Mental Health**



**Office of Addiction  
Services and Supports**

# Nassau County Department of Health promotes and protects the health of all who live, work, and play in Nassau County.

- Development and maintenance of individual and community preparedness for public health hazards and events.
- Investigation, prevention, and control of communicable diseases.
- Prevention of environmental health hazards through assessment, regulation, and remediation.
- Promotion of healthy lifestyles through outreach and education.
- Provision for evaluation and services to individuals, children, and families that have developmental delays and concerns.



**Office of  
Mental Health**



**Office of Addiction  
Services and Supports**

## Social Determinants of Health



Social Determinants of Health  
Copyright-free

 Healthy People 2030

**Economic Stability**

**Education Access & Quality**

**Health Care Access & Quality**

**Neighborhood and Built Environment**

**Social and Community Context**



**Office of  
Mental Health**



**Office of Addiction  
Services and Supports**





## PUBLIC HEALTH ALERT

Second feral cat and raccoon test positive for rabies in Nassau County

Residents are advised to avoid contact with wild or feral animals, and ensure their pets are up-to-date with their rabies vaccinations.

@nassaucountyhealth

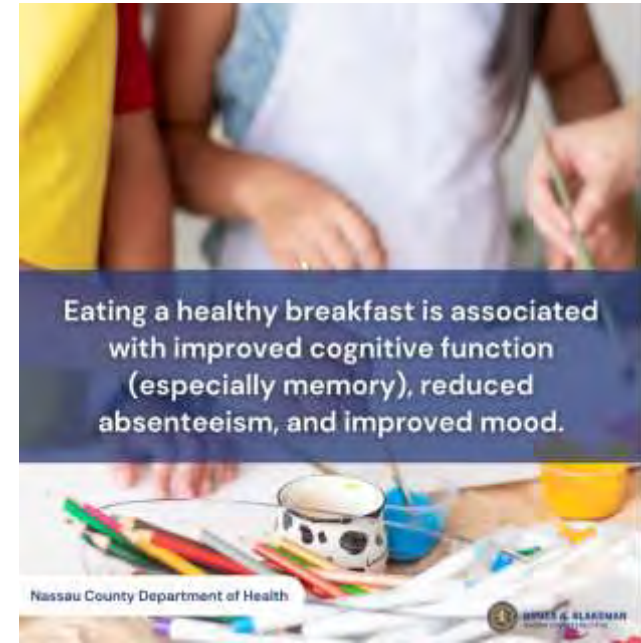


Nassau County Department of Health



Nina Sculco, MPH

Nassau County Department of Health  
Director of Community Outreach  
nsculco@nassaucountyny.gov



Office of Mental Health



Office of Addiction Services and Supports

# FCA's Senior Mental Health Services

- Target Population:
  - We serve older adults 55+ living in Nassau County having challenges related to mental health, substance use or aging needs.

## Link-Age Program and Senior Safety Net Services Offered:

- Blend of in-person and telehealth support to address any barriers to accessing care by working with client to develop an individualized care plan.
- Short Term counseling and Case Management
- Peer Support: worker is someone with lived experience of recovery from a mental health condition, substance use disorder, or both & can help identify goals, connect with sobriety groups/programs, destigmatize recovery, etc.
- Health education to increase management of chronic diseases & review medication prescriptions and doses.
- Connect with community services to help remain safe at home.
- Technology education & connection to technology.
  
- Hours of Operation: Monday to Friday, 9:00-5:00
  
- Contact Information: Susanna Caputi 516.292.1300 X1245 [scaputi@fcali.org](mailto:scaputi@fcali.org)

The Link-Age Program is a triple partnership between Nassau County Office for the Aging, Family & Children's Association (FCA) and Central Nassau Guidance & Counseling Services (CNG) funded by New York State Office for Mental Health- Partnership to Support Aging in Place. Senior safety Net is made possible through the Substance Abuse and Mental Health Services Administration (SAMHSA).

# Hispanic Counseling Center Parenting Education Program

Target Population: Parents who have been referred by court or child welfare agencies.

Program Goals: To educate the parents on how to maintain a healthy relationship and improve parenting skills, as well as overall communication with their children.

Services Offered:

- Sixteen (16) weeks psychoeducational program
- Child abuse and neglect education
- Education on respect, communication, effective discipline skills, self-esteem, and more.
- Individual screenings for mental health issues and substance use issues, as needed.
- Links and referrals to community resources and other qualified health professionals.

Hours of Operation: Monday – Thursday 9am-8pm and Friday 9am-4pm

Contact Information: Peter Danaher, Counselor, (516) 538-2613 x 297



# Office for the Aging's Programs & Services

- **Senior Centers**
- **Case Management**
- **Expanded In-home Services for the Elderly Program (EISEP)**
  - Personal Care Aide or Housekeeping Services
- **Home Delivered Meals**
  - Therapeutic, Kosher, Puree and Renal Friendly meals available
- **National Family Caregiver Support Program**
- **NY Connects**
  - Information & Assistance Hotline (516) 227-8900



**Office of  
Mental Health**



**Office of Addiction  
Services and Supports**



# Office for the Aging - Supportive Services

- **Home Energy Assistance Program (HEAP)**
- **Health Insurance Information, Counseling and Assistance Program (HIICAP)**
- **Medicare Savings Program (MIPPA)**
- **Nassau Suffolk Law Services Senior Law Project**
- **Senior Financial Counseling**
- **Cornell Nutrition Education**



**Office of  
Mental Health**



**Office of Addiction  
Services and Supports**

# Office for the Aging - Activities

- Summer Concerts
- Exercise Classes
- Lunch & Learn Seminars
- Veterans' Luncheons
- Memory Café
- Annual Older Adult Conference
- Farmers Market Coupons
- Senior Monthly Birthday Parties
- Milestone Birthday Citations
- Animatronic Pets
- Go-Go Grandparent
- Senior ID Program
- Public Hearing
- NY Senior Softball



**Office of  
Mental Health**



**Office of Addiction  
Services and Supports**



# NASSAU COUNTY OFFICE OF YOUTH SERVICES

---

The mission of the Nassau County Office of Youth Services is to promote self-esteem, positive values and morals, citizenship, dignity, as well as physical, social, and mental wellbeing among the youth of Nassau County through youth and community development.

Our guiding principles are empowering youth, strengthening families, creating healthy alternatives, developing communities, and establishing partnerships and service integration

**Ladonna Taylor**  
Executive Director

60 Charles Lindbergh Blvd  
Uniondale NY, 11553  
Phone: 516-227-7134

**Keith Gerber**  
Senior Program Coordinator  
& Runaway, Homeless Youth  
Coordinator

**Marilyn Torres**  
Community Relations Assistant  
& Program Coordinator

**Sheila Riera**  
Executive Assistant &  
Program Coordinator

**Carl DeHaney**  
Community Service  
Representative

<https://www.nassaucountyny.gov/1957/Youth-Services>



**Office of  
Mental Health**



**Office of Addiction  
Services and Supports**

# OFFICE OF YOUTH SERVICES PROGRAMS

---

- **Annual Girls Summit:**

An empowering event that brings young girls together to discuss leadership, personal development, and future opportunities.

- **Annual Boys Conference:**

A conference aimed at fostering mentorship and growth for young boys through interactive workshops and discussions on manhood and responsibility.

- **Summer Youth Employment Program:**

A program that provides young interns with paid work experience and skill development during the summer. Participants explore various industries while gaining professional skills, financial literacy, and workplace readiness. The program also offers career workshops, and mentorship support to prepare youth for future employment.

- **Back to School Programs:**

Supportive programs that provide essential supplies, resources, and encouragement to students as they prepare for a successful school year.

- **Gang and Gun Prevention Programs:**

Community-based interventions focused on preventing youth involvement in gangs and reducing gun violence through education and outreach

- **Holiday Programs:**

Seasonal programs that offer gifts, food, and holiday cheer to families in need during the festive season.



**Office of  
Mental Health**



**Office of Addiction  
Services and Supports**

# OFFICE OF YOUTH SERVICES ACTIVITIES & SERVICES

---

- **OSHA-30 Training Course**

A comprehensive safety course designed to educate workers on workplace hazards, safety regulations, and practices for maintaining a safe working environment. As well as receive certifications like Flaggers, Osha-30, SST and others.

- **Navigating Trade Unions**

A program that guides individuals on how to effectively join, navigate, networking with employers and benefit from trade unions in various industries.

- **Prom Dress and Suit Initiative**

A charitable initiative that provides free prom attire to high school students to ensure they have a memorable and stylish prom experience.

- **Annual Cancer Fundraiser**

An annual fundraising event aimed at raising awareness, teaming with youth organizations and financial support for breast cancer research and survivors.

- **Community Wellness Event**

Initiatives aimed at improving the overall health and well-being of community members through fitness, nutrition, and mental health services.

- **Career Exploration Expo**

This expo offers individuals the chance to explore various industries and connect with potential employers. It features networking opportunities, workshops, and insights into diverse career paths to help participants navigate their professional journey.



Nassau  
County  
Office of  
Crime  
Victim  
Advocate



Office of  
Mental Health



Office of Addiction  
Services and Supports



**BRUCE A. BLAKEMAN**  
NASSAU COUNTY EXECUTIVE

# Office of **CRIME VICTIM ADVOCATE**



NASSAU COUNTY  
OFFICE OF CRIME VICTIM ADVOCATE

1 West Street • Mineola, New York  
**516-571-1598**

## **OCVA provides the following services as specified by Nassau County Charter § 2115:**

- Legal assistance to victims and witnesses of crime who are served with judicial orders to show cause by criminal defendants or their representatives to gain access to their home or place of business.
- Legal assistance with any victim compensation applications.
- Legal assistance to any victim or witness with regards to any legal action related to New York Criminal Procedure Law Chapter 245.
- Information on victim's and witness's legal rights and protections with regards to criminal process.
- Assist victims to submit comments to courts and parole boards.

### **Additional Services but not limited to:**

- Assistance and accompaniment with reporting a crime
- Crisis Counseling Intervention
- Education regarding the criminal justice process
- Assistance completing NYS Office of Victim Services compensation Application and appeals
- Safety Planning
- Personal Advocacy
- Liaison with law enforcement and District Attorney's Office
- Court Accompaniment
- Registering for inmate notifications Vine/DOCCS
- Linkage to community and crime victim service providers
- Linkage to various County Agencies
- Referrals to civil legal services

**Connect With Us:**



**Office of  
Mental Health**



**Office of Addiction  
Services and Supports**



# HELP, HEALING, & HOPE

## SUPPORTING VICTIMS AND SURVIVORS

Experiencing a crime can be the start of a long and challenging process for victims and survivors, their families, and their friends. **The New York State Office of Victim Services (OVS)** is committed to helping you find **healing and hope** when you need it most.

**Experiencing a crime is not your fault.** Whether you have survived a crime, assist those recovering from a crime, or want to support someone you love, **you are not alone.** OVS can help you navigate confusing systems as you work through difficult situations.

The effects of any type of crime can cause physical, medical, financial, and emotional stress for the people involved. You may see:

- Learning about resources you didn't know existed.
- Working with a legal system that can be confusing.
- Connecting with programs or providers you've never met.
- Using your own money for problems you never imagined you would have.
- Dealing with new or unexpected feelings.
- Worried about keeping yourself and your loved ones safe.
- Unsure about who to trust.

OVS has resources that can help you.

## DELIVERING CRITICAL SERVICES

You can turn to OVS for resources and compensation after **experiencing a crime.**

OVS can provide **financial help and reimbursement to eligible people affected by crime for out-of-pocket expenses** like medical and counseling costs, end-of-life arrangements and funeral expenses, lost wages, and more.

OVS also **funds and supports more than 200 Victim Assistance Programs (VAPs)** across New York State that offer services like counseling, advocacy, emergency shelter, relocation assistance, and more.

## EXPLORING YOUR OPTIONS

Connecting with a program, or VAP, is the **first step** in deciding whether filing a claim with OVS is right for you.

VAPs have victim advocates, social workers, attorneys, and other trained individuals who can help you. They can **provide immediate help** to people affected by crime in every area of New York State. VAPs can help you **learn about your rights, understand benefits and resources** that can help, and **complete an OVS compensation application.**

### Reminder

VAPs funded by OVS provide **free and confidential services.** If you have experienced crime, you don't need to report it to law enforcement to **get support from a VAP.**



To **locate a VAP** near you, scan to learn more or visit **OVS Resource Connect** at: [ows.ny.gov/connect](https://www.ows.ny.gov/connect)

## ABOUT COMPENSATION

People affected by crime often deal with expenses even **after filing insurance claims** or exhausting other sources of reimbursement. **That's where OVS comes in.**

OVS may be able to reimburse for:

- Medical and counseling expenses.
- Loss or damage of personal property important to health, safety, and welfare.
- End-of-life arrangements and funeral expenses.
- Lost wages or support.
- Transportation to court appearances or medical appointments.
- Moving expenses or relocation costs.
- Home security devices and installation.
- Restoring properties or spaces where a crime occurred.
- Other eligible expenses resulting from a crime.

Victims and survivors or their loved ones can **file an OVS compensation application** if they **experienced a crime in New York State** or are a New York State resident involved in a terror attack outside the country.

### APPLYING FOR COMPENSATION

The quickest and easiest way to complete an OVS compensation application is to **connect with a program, or VAP.** You may also complete the application online.





National Alliance on Mental Illness

# NAMI Queens/Nassau



The National Alliance on Mental Illness, NAMI Queens/Nassau is the local affiliate. We educate, advocate, and support both caregivers for and those with a mental health disorder. Leaders with lived experience host virtual as well as in person support groups, educational programs and presentations in classrooms, board rooms, and faith communities, as well as host peer support and peer socialization programs.

# NAMI Queens/Nassau offers member driven groups and classes:

## - Support Groups:

- Caregiver Support Serious Mental Illness
- Caregiver Support Co-Occurring
- Black & Brown Caregiver Support
- NAMI Whole Family Support Group
- Sibling Support Group
- Suicide Support Group
- Suicide Bereavement Group
- Families Surviving Suicide Loss
- Peer Support Group
- Sharing & Caring Support Group

- 8 Session Educational Classes that teach about mental illness, how to advocate for your loved one, medications and so much more:

- Family-to-Family - caregivers
- Basics – parents of teens
- Ending the Silence – in school presentation students and staff
- Peer-to-Peer – over 18 rehabilitation, recovery and connection.

Monthly Educational Meetings that are member driven and defined

- UNITES peer socialization
  - Sharing Hope outreach to diverse communities.
  - Homefront Veteran Support
  - FaithNet Presentations
  - Presentations for law enforcement
  - Our loved ones deserve to live with dignity and respect.
- We talk with local, state and national legislators to educate and illuminate.

*We are grant funded and free for participants.*



We are not clinical care providers we listen and help guide you. [namiqn.org](http://namiqn.org)

[office@namiqn.org](mailto:office@namiqn.org)

[516-326-0797](tel:516-326-0797)

[718-347-7284](tel:718-347-7284)



# Why NAMI Queens/Nassau?



Your loved one's behavior is off – you know something is up that is beyond your understanding, and it scares you. After a brief emergency room visit you are more confused than ever. Searching the web for answers you find NAMI our SEO is amazing! We listen for as long as it takes for you to calmly take notes, so that your next step is in front of you. This is the beginning of NAMI's role in the continuum of care. We help people with step one, we help people find all of you in this room. We do not provide clinical care.



# Namiqn.org Crisis Page



## Need Immediate Help In An Emergency?

If you or a loved one is in immediate danger **calling 911 and talking with police** may be necessary. It is important to notify the operator that it is a psychiatric emergency and ask for police officers trained in crisis intervention or trained to assist people experiencing a psychiatric emergency. **Call 988 to talk with a trained mental health crisis team.**

## New York State Mental Health Hotline: 1-844-863-9314

### Queens/NYC

**24/7 Crisis Mental Health Services:**

**1-888-NYC-WELL /  
(1-888-692-9355)**

Text "Well" to 65173. Chat online at [nyc.gov/nycwell](http://nyc.gov/nycwell), Relay Service for Deaf/Hard of Hearing  
Call 711, Español Press 3, 中文 Press 5

### Nassau County

**24/7 Behavioral Health Helpline:**

**1-516-227-8255**

### Suffolk County

**24/7 (DASH):**

**1-631-952-3333**

**The Diagnostic, Assessment and Stabilization Hub (DASH)**  
Walk-ins are welcome, social workers and nurses available 24 hours a day  
90 Adams Avenue, Hauppauge 11788  
This is managed by the Family Service League of Long Island

## List of Hospitals with Psychiatric Units by County:

### Queens/NYC

**Jamaica Hospital Medical Center**, 8900 Vanwyck Expressway New York, 11418 - (718)206-6000 Call Psychiatric Emergency 718- 206-7099

**NYC Health+Hospital/Elmhurst**, 79-01 Broadway, Elmhurst, New York 11373, 1-718-334-4000

**NYC Health + Hospitals/Queens**, 82-68 164th Street  
Queens, New York 11432, 1-718-883-3000

**Zucker Hillside Hospital (LJ Campus)**, 75-59 263rd St.Glen Oaks, NY 11004, Adult Crisis  
Care M-F, 9-3PM 718-470-8300

### Nassau County

**Zucker Hillside Hospital (LJ Campus)**, 75-59 263rd St.Glen Oaks, NY 11004, Adult  
Crisis Care M-F, 9-3PM Call 718-470-8300

**Catholic Health Mercy Medical Center**, 1000 N Village Avenue, Rockville Centre, NY  
11570 , 516-826-3729

**Nassau University Medical Center** Psychiatric Emergency Room, 2201 Hempstead  
Tpke, East Meadow, NY 11554, 516-572-6394

**Mount Sinai South Nassau**, One Healthy Way, Oceanside, NY 11572516-632-3000

**St. John's Episcopal Hospital**, 327 Beach 10th St, Far Rockaway, NY 11501, 718-860-  
7000

### Suffolk County

**South Oaks Hospital**,400 Sunrise Highway, Amityville, NY 11701, 631- 264-  
4000

**Stonybrook University Medical Center**, Psychiatric emergency call our 24-hour  
psychiatric emergency room at 631-444-6090

**Catholic Health St. Catherine of Siena Hospital** Behavioral Health Services, 631-  
862-3000

Brookhaven Hospital  
John T. Mather, Psychiatric Emergency Room  
Eastern Long Island Hospital

**Confused as to who you should call? Call NAMI Queens/Nassau M-F 9-4 (516) 326-  
0797 or (718) 347-7284**

# Namiqn.org Resources



### Upcoming NAMI Queens/Nassau Events

SEP 6:30 pm - 7:30 pm EDT

**15 Peer Support Group**

SEP 6:30 pm - 8:30 pm EDT

**15 Family to Family Virtual**

SEP 2:00 pm - 4:00 pm EDT

**18 Unites Presents: Bowling at Herrill Lane**

SEP 5:00 pm - 6:30 pm EDT

**18 Sharing and Caring Group-Virtual**

SEP 6:00 pm - 7:30 pm EDT

**19 Black And Brown Wellness Caregiver Support Group**

[View Calendar](#)

[CLICK TO VIEW FULL CALENDAR](#)

### Youth trauma rates mean parents must watch for warning signs of suicide

Posted in Breaking News

### Mental health professionals can't keep up with demand

Posted in Breaking News

## Criminal Justice

Menu	
Homepage	
Donate Now	
About Us	+
Your Journey	+
Tardive Dyskinesia (TD)	
Resources	+
Get Involved	+
Calendar	
Support & Education	+

### About Mental Illness

A mental illness is a medical condition that disrupts a person's thinking, feeling, mood, ability to relate to others and daily functioning.

[LEARN MORE](#)

### What is Recovery?

Recovery from serious mental illness is not only possible, but for many people living with mental illness today, it's essential. The notion of recovery involves a variety of perspectives.

[LEARN MORE](#)



If you, or a loved one, are currently struggling with a mental illness and also facing incarceration, we understand this is a very tough period for you. There are several organizations that can support and assist you during this period so you don't go through this alone. These organizations provide services pre-incarceration, during incarceration and post-incarceration. They assist in a variety of ways, from advocating for individuals to serve through a community-based alternative to incarceration (Center for Alternative Sentencing and Employment Services), to providing free legal and advocacy services to children and adults with disabilities (During Incarceration Assistance) to empowering formerly incarcerated and their families (Alliance of Families for Justice).

These resources were put together by our Criminal Justice Committee. Please email us if you would like to join the committee. Also, if you've had experience with any of these organizations and would like to make a comment, or if you know of one that you think should be added to the website, please contact Jodi, [ajm1@ckc.columbia.edu](mailto:ajm1@ckc.columbia.edu) or Katherine, [kinnas@yahoo.com](mailto:kinnas@yahoo.com).

Maria Cervato, Chair  
[mcervato0116@gmail.com](mailto:mcervato0116@gmail.com)

- CRIMINAL JUSTICE ADVOCACY FOR PEOPLE WITH MENTAL ILLNESS
- PREVENTING INCARCERATION
- DURING AND POST INCARCERATION
- COUNTY JAIL INFO

## Common WARNING SIGNS of Mental Illness

Diagnosing mental illness isn't a straightforward science. We can't test for it the same way we can test blood sugar levels for diabetes. Each condition has its own set of unique symptoms, though symptoms often overlap. Common signs and/or symptoms can include:

- Feeling very sad or withdrawn for more than two weeks
- Trying to harm or end one's life or making plans to do so
- Severe, out-of-control, risk-taking behavior that causes harm to self or others
- Sudden overwhelming fear for no reason, sometimes with a racing heart, physical discomfort or difficulty breathing
- Significant weight loss or gain
- Seeing, hearing or believing things that aren't real\*
- Excessive use of alcohol or drugs
- Drastic changes in mood, behavior, personality or sleeping habits
- Extreme difficulty concentrating or staying still
- Intense worries or fears that get in the way of daily activities

\*Various communities and backgrounds might view this sign differently based on their beliefs and experiences. Some people within these communities and cultures may not interpret hearing voices as unusual.

### WORRIED ABOUT YOURSELF OR SOMEONE YOU CARE ABOUT?

- If you notice any of these symptoms, it's important to ask questions
- Try to understand what they're experiencing and how their daily life is impacted
- Making this connection is often the first step to getting treatment

### KNOWLEDGE IS POWER

- Talk with a health care professional
- Learn more about mental illness
- Take a mental health education class
- Call the NAMI HelpLine at 800-950-NAMI (6264)

**50%** of all lifetime mental illness begins by age **14**

**75%** by age **24**



# Calendar of programs with easy online registration.

**NAMI Queens/Nassau**

About Us + Your Journey

NAMI Family-to-Family will be offered by NAMI Queens Nassau at our Syosset Campus. It is for family members who have been there, and includes presentations, discussions, activities.

This in person program will be held at Shelter Rock Church, 178 Cold Spring Syosset, on Wednesdays, beginning October 19th through December 29th from

Registration is required. Please contact Co-teachers: Janet Reilly 516-238-1023 or Lini 540 for a brief interview.

[Add to calendar](#)

Name

First

Second

Phone

How did you learn about this class?

**DETAILS**

Date: November 9

Time: 7:00 pm - 9:00 pm EST

Event Category: Family-to-Family

**VENUE**

178 Cold Spring Syosset, NY

1 Peer Support Group

30	31	1	2	3	4	5
8:00 pm - 8:30 pm Sharing and Caring Group-Virtual	6:30 pm - 7:30 pm Unites: Halloween Arts and Crafts	2:00 pm - 3:00 pm Peer Support Group		8:30 pm - 7:30 pm Peer Support Group 6:30 pm - 9:00 pm NAMI Basics: our Signature Educational Program (Virtual) 7:00 pm - 9:00 pm Family to Family In-Person with Lisa and Ron		
6 5:00 pm - 6:30 pm Sharing and Caring Group-Virtual 6:30 pm - 8:30 pm Peer to Peer	7 6:30 pm - 7:30 pm Black And Brown Wellness Caregiver Support Group	8 2:00 pm - 3:00 pm Peer Support Group	9 7:00 pm - 9:30 pm Family to Family In Person	10 6:30 pm - 7:30 pm Peer Support Group 6:30 pm - 9:00 pm NAMI Basics: our Signature Educational Program (Virtual) 7:00 pm - 9:00 pm Family to Family In-Person with Lisa and Ron	11	12
13 2:00 pm - 4:00 pm Unites Presents: Bowling at Hermit Lane 5:00 pm - 6:30 pm Sharing and Caring Group-Virtual 6:30 pm - 8:30 pm Peer to Peer	14	15 2:00 pm - 3:00 pm Peer Support Group 6:30 pm - 8:00 pm In Person Family Support Group with CarolAnn (2022-2023) 7:00 pm - 8:30 pm Support Group: Virtual With David And Gail	16 7:00 pm - 9:30 pm Family to Family In Person	17 8:30 am - 4:00 pm In Person Mental Health First Aide 6:30 pm - 7:30 pm Peer Support Group 6:30 pm - 9:00 pm NAMI Basics: our Signature Educational Program (Virtual)	18	19
20 5:00 pm - 6:30 pm Sharing and Caring Group-Virtual 6:30 pm - 8:30 pm Peer to Peer	21 6:00 pm - 7:30 pm Black And Brown Wellness Caregiver Support Group	22 2:00 pm - 3:00 pm Peer Support Group	23 7:00 pm - 9:30 pm Family to Family In Person	24 6:30 pm - 7:30 pm Peer Support Group	25	26
27 5:00 pm - 6:30 pm Sharing and Caring Group-Virtual 6:30 pm - 8:30 pm Peer to Peer	28	29 2:00 pm - 3:00 pm Peer Support Group	30 7:00 pm - 9:30 pm Family to Family In Person	1 7:00 pm - 9:00 pm Family to Family In-Person with Lisa and Ron	2	3 2:00 pm - 4:00 pm Unites Presents: Bowling at Hermit Lane

**UNITES** is a peer socialization program dedicated to help make social connections through common unity of mutual support. Our goal is to help alleviate the feelings of isolation and loneliness that members experience because of their illness, twice a week – every week.

**Karaoke  
Monday  
October 7, 2024  
6:30 - 8:00**

**Game Night  
Monday  
October 14, 2024  
6:30 - 8:00**

**Creative Writing  
Monday  
October 21, 2024  
6:30 - 8:00**

**Concert Night  
Monday  
October 28, 2024  
6:30 - 8:30**

**Bowling Saturday  
October 26, 2024  
11:00 - 2:00**



# Monthly Educational Meetings

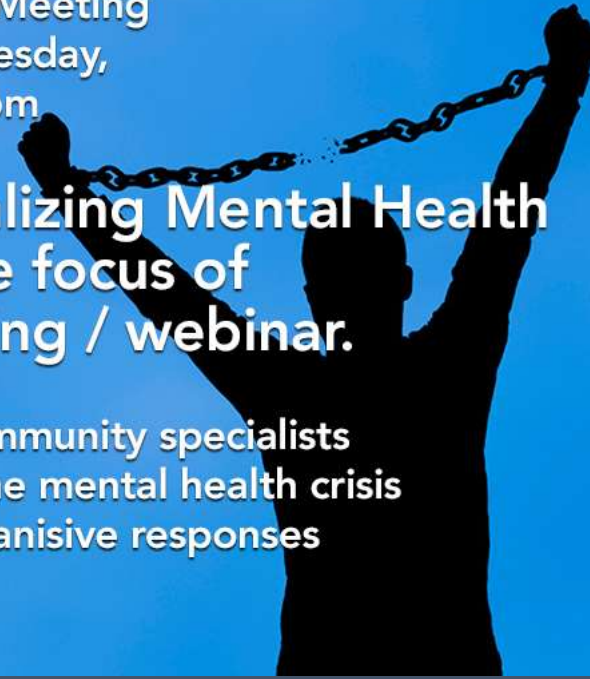
Monthly Meeting  
Empowering Change:  
Special Presentations  
from Goodwill and  
U.S. Coalition of Black  
Women Businesses  
July 20th, 7PM



May Monthly Meeting  
Join Us Wednesday,  
May 18, 7:00pm

Decriminalizing Mental Health  
will be the focus of  
this meeting / webinar.

A panel of community specialists  
will address the mental health crisis  
with comprehensive responses



**NARCAN SAVES LIVES**



# NAMI Queens/Nassau Events

## NAMIQNFBEST.org Resource Fair September 29<sup>th</sup>



**NAMI Queens/Nassau** is making a positive impact on the mental health and wellness of our friends, neighbors, and community.



Our leaders change lives everyday by sharing stories *not of despair* but experiences of **perseverance, effort, and healing.**

In 2023/24 we hosted over 450 support groups, 50 educational classes, 65 socialization groups and 40 in school presentations.

We are having an impact on many. We are the changing lives of hundreds.  
Help us, help *you* change a life – lets work together.



# Long Island Advocacy Center Family Support Programs/OPWDD

- Target Population: People with a developmental disability.

Family Support Services provides a variety of services directed at parents, siblings, and other relatives to enhance a family's capacity to continue caring for a family member with a developmental disability living at home. LIAC offers:

- **Family Support Service Access Coordination** which assists families in gaining access to services and supports appropriate to their needs.
  - **Parent Training** which assists parents with developmental disabilities with navigating the education system for their children regardless of whether their children have a disability.
  - **Benefits Advisement and Support for Eligibility Program (BASE)** which provides comprehensive benefits advisement and support of OPWDD eligibility for individuals with a developmental disability.
  - Hours of Operation: Monday-Friday, 9-5pm.
- 
- Contact Information: online intake at [www.theliac.org](http://www.theliac.org)

Presenter: Eilleen Buckley & Stefanny Droz



# **Nassau County Behavioral Health Awareness Education and Training**

**Calle Panakos  
Director of Education & Training  
Nassau County Behavioral Health  
Awareness Training and Education**

## Abstract on Mental Health Education & Training:

Mental Health education and training enhances mental health awareness allowing us to give it the same attention we give to our physical health. Furthermore, training and education highlights employees needs and helps them to foster and practice a more therapeutic approach to treatment, resulting in staff feeling more prepared and confident with the appropriate tools and resources to support our most vulnerable populations that we serve, as well as one another in the workplace.

**If your organization requires a specific training or learn a specific intervention, please connect with Education and Training to discuss what your organizations specific needs are. Intelligence for that topic will then be developed specifically for your organization.**



**Office of  
Mental Health**



**Office of Addiction  
Services and Supports**

# Nassau County Narcan

- Our Narcan program is deemed ESSENTIAL
- Continue to provide VIRTUAL monthly trainings to the community
- Continue to provide in-person trainings to local agencies
- Narcan kits are available for CONTACTLESS pick up at our office after being trained
- During this unprecedented time, we have trained over 3,000 people
- **If you are interested in being trained contact:**
  - Callie Panakos, MSHS
  - **Phone:** 516-227-7057 or 516-227-7032



# Mental Health First Aid

MHFA is an evidenced based training that teaches individuals how to identify, understand and respond to signs of mental illness and substance use disorder.

Open to any member of the community (age 18+) at no cost.



- Mental Health and Substance Use providers.
- Law Enforcements/Probation/Corrections
  - Faith-Based Communities
  - School Professionals
  - Family and Friends
  - College Students
- Mental Health First Aid courses are currently being offered in-person and virtually.



# Mental Health First Aid

To schedule a Mental Health First Aid course, please contact :

Nassau County Office of Mental Health, Chemical Dependency and  
Developmental Disabilities Services

Calle Panakos

Phone: 516-227-7032

Email: [Calle.Panakos@hhnassaucountyny.us](mailto:Calle.Panakos@hhnassaucountyny.us)



**Office of  
Mental Health**



**Office of Addiction  
Services and Supports**

# Nassau County 2023 Catalog of Available Training Courses:

1. **Narcan Training (1.5 CEU)**
2. **Events, Experiences and Effects of Acute, Chronic Complex Trauma (2 CEU)**
3. **Understanding Adolescent Mental Health (2 CEU)**
4. **Mental Health First Aid ( all modules)**
  - **Adult Module**
  - **Youth Module**
  - **VET Module**
  - **Law Enforcement Module**
  - **Higher education Module**
  - **Elderly Module**
  - **Fire/EMS module**
5. **Psychological First Aid 2- or 5-hour module (2 or 5 CEU)**
6. **QPR (Question, Persuade, Refer) SUICIDE PREVENTION TRAINING (2 CEU)**
7. **The Science of De-Escalating, From Theory to Practice for Behavioral (2 CEU)**
8. **Motivational Interviewing (MI) Evoke patient Motivation & Elicit Change Talk (2 CEU)**
9. **Exposure Therapy, Overcoming Barriers to Fear, (2 CEU)**
10. **The Hijacked Youth Brain Smartphone, Social Media & Gaming Addictions, Dangers and Resources (3 CEU opportunity)**
11. **The Rising Opioid Crisis Drugs, Brains & Behaviors**
12. **Understanding Mental Health and Substance Use Disorders (1.5 CEU)**
13. **Cultivating Respect for Others. A Foundation for Communication Safety (2 CEU)**
14. **The Annihilation “Fentanyl” (2 CEU)**
15. **The Impact of Culture on Mental Health, Substance Use Disorders and Abuse in Adolescents (2 CEU)**
16. **The Link Between Trauma Addiction, How the Body Keeps Score (2 CEU)**



**Office of  
Mental Health**



**Office of Addiction  
Services and Supports**

# Thank you for Attending



**Office of  
Mental Health**



**Office of Addiction  
Services and Supports**