



# *Open Space Parks & Advisory Committee*

REGULAR MEETING

APRIL 10<sup>th</sup>, 2024



# 1.) Call to Order



2.) Approval of  
Previous Meeting  
Minutes  
*(9/13/23)*



3.) *Adopt OSPAC  
2024 Meeting Date  
Calendar*



# 4.) Introduction of New Properties







OSPAC 1-2024

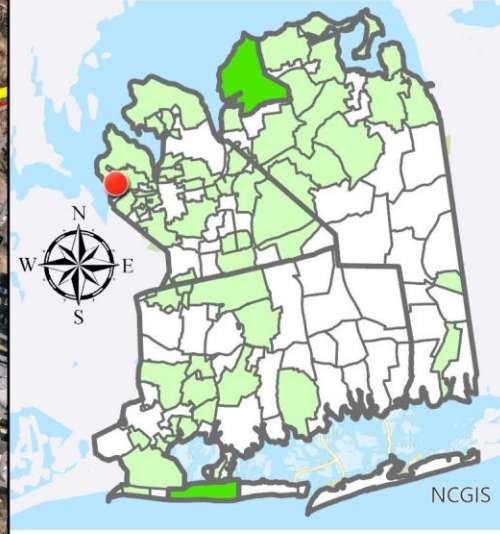
Incorporated Village of

KINGS POINT

Section: 1 Block: 203 Lot(s): 1A & 4

Legend

-  CASE SELECTED PARCELS
-  NASSAU PARCELS
-  NASSAU COUNTY PLACE OUTLINES
-  NASSAU ROADWAY ANNOTATION
-  COUNTY OWNED ROADWAY ANNOTATION
-  LIRR



NASSAU COUNTY DEPARTMENT OF PUBLIC WORKS



This product is for informational purposes and may not have been prepared for, or be suitable for legal, engineering, or surveying purposes.  
 Nassau County makes no representations or warranties, expressed or implied, concerning the accuracy, completeness, reliability or suitability for the use of this information.  
 Nassau County assumes no liability associated with the use or misuse of such information.  
**GEOGRAPHIC INFORMATION SYSTEMS**  
 © 1993 - 2011



Copyright: nearmap 2015. Sources: Esri, Airbus DS, USGS, NGA, NASA, CGIAR, N. Robinson, NCEAS, NLS, OS, NMA, Geodatastyrelsen, Rijkswaterstaat, GSA, Geoland, FEMA, Intermap and the GIS user community, Esri Community Maps Contributors, NYC OpenData, Nassau County, © OpenStreetMap, Microsoft, Esri, TomTom, Garmin, Safegraph, GeoTechnologies, Inc, METI/NASA, USGS, EPA, NPS, US Census Bureau, USDA, USFWS



N 209,900

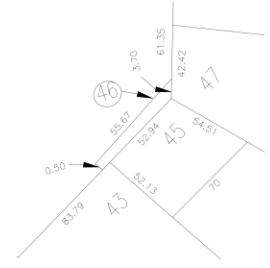


N 207,800



E 2,069,500

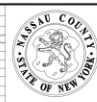
E 2,072,200



DETAIL SCALE 1" = 50'

- LOT NO: 1A, 1B & 4
- COUNTY OF NASSAU
- LOT NO: 5
- GREAT NECK LIBRARY
- LOT NO: 6
- GREAT NECK WATER POLLUTION
- LOT NO: 17
- North GREAT NECK WATER AUTHORITY
- LOT NO: 21
- GREAT NECK SYNAGOGUE
- LOT NO: 40
- INC. VILLAGE OF GREAT NECK
- LOT NO: 72
- UNION FREE SCHOOL DISTRICT #7

FMLY BLK P



Nassau County  
Department of Assessment  
Land & Tax Map

Map Last Revised May 31 2023

SEC. 1  
BLK. 203 SHEET 1 OF 1

LEGEND				SPECIAL DISTRICTS				MUNICIPALITIES						
COUNTY LINE	---			POLICE	3	FIRE PROTECTION	45	PUBLIC PARKING		TOWN OF				
TOWN LINE	---			County Police		Great Neck		SEWER		NORTH HEMPSTEAD				
VILLAGE LINE	---			WATER	9	SANITARY		PARK	57	OSTER BAY				
SCHOOL DISTRICT LINE	---			Great Neck		REFUSE & GARBAGE		Great Neck		CITY OF				
PROPERTY LINE	---			LIGHTING	30	REFUSE DISPOSAL		IMPROVEMENT	82	GLEN COVE				
SPECIAL DISTRICT LINE	---			Town of North Hempstead		SEWAGE COLLECTION		Great Neck	2	LONG BEACH				
BLOCK LIMIT	---			LIBRARY				Town of North Hempstead	S	VILLAGE OF:				
LOCATOR POINT	•			FIRE				SIDEWALK		"Incorporated Village of Saddle Rock"				
TAX MAP PARCEL NO.	246									"Incorporated Village of Kings Point"				
CALCULATED ACRES	746(C)									"Incorporated Village of Great Neck"				
DEED ACRES	1784									SCHOOL DISTRICT				
SCALED DIMENSION	3075									Great Neck	7			
DEED DIMENSION	185.69													
REFERENCE MAPS														
MAP NO. 4847, 6089, 6450, 11-1730														
CODE		SPECIAL	DISTRICT	WITHIN	CODE		SPECIAL	DISTRICT	WITHIN	CODE		SPECIAL	DISTRICT	WITHIN
700	1													
725	1	3	82											
755	1	3	87											
807	1	2	3	30 45 57 82 9 S										

COPYRIGHT 1988 NASSAU COUNTY







9/11 Memorial Bridge  
Saddle Rock











# 5.) Old Business



# 6.) New Business



7.) Review of Open  
Space Fund Balance:  
*As of April 3, 2024 - \$2,016,114*



# 8.) Confirm Next Meeting Date:

*Wednesday, May 8, 2024, at  
4:00 P.M.*





# 9.) Adjournment

