



CERT



NASSAU COUNTY

BRUCE A. BLAKEMAN
NASSAU COUNTY EXECUTIVE

MONTHLY NEWSLETTER

May 2023

Basic 800MHz Radio Procedures for Community Emergency Response Team Members



With the busy season approaching and many planned events scheduled, it is a good time to go over and review radio procedures.

Effective communication is a critical component of any emergency response situation. For Community Emergency Response Team (CERT) members, using 800MHz radios can ensure clear and reliable communication during emergencies. This article will outline basic radio procedures that every CERT member should be familiar with to enhance their team's efficiency and effectiveness.

1. Know Your Radio

Before using an 800MHz radio, familiarize yourself with its functions and features, such as the power button, volume control, channel selector, and emergency button. Understanding how to operate the radio will ensure you can use it quickly and efficiently when it matters most.

Continued on next page



COUNTY, STATE
&
FEDERAL
ONE TEAM



2. Use the Correct Channel

In emergency situations, multiple agencies may be using different channels on the 800MHz radio system. It is crucial to know which channel is assigned to your CERT team, as well as any alternate channels for backup communication. Ensure that you are always on the correct channel to avoid confusion and maintain clear lines of communication.

3. Keep Communications Brief and Clear

During an emergency, it's essential to keep radio traffic to a minimum to ensure that critical information can be transmitted without interruption. Speak clearly and concisely, using plain language instead of codes or jargon. Always identify yourself and the person you are trying to reach at the beginning of each transmission.

Example: "CERT Team Leader, this is John. I have an update on the situation at the evacuation center."

4. Use the "Two-Second Rule"

When transmitting a message, always wait two seconds after pressing the push-to-talk (PTT) button before speaking. This ensures that your entire message is transmitted without being cut off. Similarly, wait two seconds after the other person has finished speaking before responding to avoid talking over them.

CONT. ON NEXT PAGE

5. Confirm Message Receipt

To ensure that your message has been received and understood, ask the recipient to acknowledge receipt or repeat the message back to you. This is particularly important when conveying critical information or instructions.

Example: "CERT Team Leader, this is John. I have an update on the situation at the evacuation center. Please confirm receipt."

6. Maintain Radio Discipline

Avoid unnecessary chatter and casual conversations on the radio. Keep in mind that other team members and agencies may be using the same channel, and any unnecessary transmissions can cause confusion or delays in communication.

7. Keep Your Radio Charged and Accessible

A dead or misplaced radio is of no use during an emergency. Ensure that your radio is fully charged before starting your shift and keep it within reach at all times.

8. Know When to Use the Emergency Button

The emergency button on your 800MHz radio can alert other CERT members and emergency personnel to your location and situation. Use this button only in life-threatening situations or when you require immediate assistance.

By following these basic 800MHz radio procedures, CERT members can greatly enhance their team's communication and overall effectiveness during emergency response situations. Familiarizing yourself with your radio, maintaining radio discipline, and keeping communications clear and concise are crucial skills that every CERT member should possess.



Word Find

Good luck, and have fun unscrambling these words related to radio! Answers are at bottom of page and upside down.

1. WAVE - _ _ _ _ _

2. GNSI - _ _ _ _ _

3. NEEANT - _ _ _ _ _

4. QUIFYREQNE - _ _ _ _ _

5. ODMULOAT - _ _ _ _ _

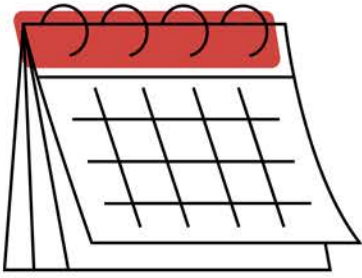
6. RNASOSPT - _ _ _ _ _

7. CDEOEDR - _ _ _ _ _

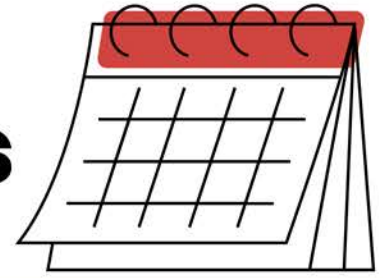
8. TRPNIECECAT - _ _ _ _ _

9. GLSIAN - _ _ _ _ _

10. RACITINSFOIION - _ _ _ _ _



Planned Events



May marks the beginning of a new season of planned events. The weekend of May 6th started it off with the Special Olympics in Farmingdale and the Long Island Marathon at Eisenhower park.



CERT members Leslie, Christian and Selvin ready for the L.I. Marathon



Photo: Rick DeLucia

Upcoming events

May 26th-28th - Jones Beach Air Show - Will be requesting around 5-10 CERT members to be stationed under tents on the boardwalk to help hand out CERT related information.

September 22nd - Fire Service Academy Training - Approximately 30 CERT member will be requested for an active shooter type training for medical professionals from the Medical Center. CERT member will act as victims during this exercise.

Calendar of Events

May

S	M	T	W	T	F	S
	1	2	3	4 RACES Meeting 7:30pm	5	6
7 LI Marathon	8	9	10	11	12	13
14	15	16	17	18	19	20
21	22	23	24	25	26 Air Show	27 Air Show
28 Air Show	29	30	31			

June

S	M	T	W	T	F	S
				1 RACES Meeting 7:30pm	2	3
4	5	6	7	8	9	10
11	12	13	14	15	16	17
18	19	20	21	22	23	24
25	26	27	28	29	30	



**CERT Division Meetings
7:00pm**



**LI Marathon
8:30am**



**RACES Meeting
7:30pm**



**Jones Beach Air
Show**

Important Dates

RACES Meeting - 7:30pm Thursday, May 4th, June 1st

Long Island Marathon - 830am Sunday, May 7th

Jones Beach Air Show - May 26th - 28th



NASSAU COUNTY CERT COORDINATORS

**BOB CHIZ & RICK DELUCIA
OEMCERT@NASSAUCOUNTYNY.GOV**

DIVISION 1

**DIVISION SUPERVISOR
BILL PAVONE
NASSAUCERTDIV1@YAHOO.COM**

DIVISION 2

**DIVISION SUPERVISOR
MARVIN STEIN
CERTDIV2NASSAU@GMAIL.COM**

FOLLOW US ON SOCIAL MEDIA



Nassau County OEM



@nassaucountyoem



@nassaucountyoem