

Appendix I - High Opportunity Areas

What is a High Opportunity Area?

High Opportunity Areas are in Nassau County, including but not limited to communities in the Nassau County Urban Consortium, with the following characteristics (1) very low poverty rates; (2) very low unemployment rates; (3) high levels of completed college among adults; (4) low African American and Latino population; (5) high performing public schools; (6) low crime rates; and (7) access to public transportation and employment. The data used to identify these criteria and maps depicting each of the criteria are included below.

Very Low Poverty Rates

Poverty Rate data from HUD's Low Poverty Index sorted at the census tract level with source data from the 2009-13 ACS. The closer the score the score is to 100, the less exposure to poverty in a neighborhood, and the more it would contribute to a high opportunity area. See Figure 1.

Very Low Unemployment Rate

Unemployment Rate data from the US Census Bureau's ACS 2013-17 5-Year Estimates. Data is sorted at the census tract level and compared to the national unemployment rate of 6.6%. Based on this national average, census tracts with employment rates at or below 6.6 percent are considered very low unemployment rates, and those equal to or greater than 6.6 percent are very high unemployment rates. See Figure 2.

High Levels of Completed College

Completed College data was gathered from the US Census Bureau's ACS 2013-17 5-Year Estimates. Data is sorted at the census tract level and compared to the national average of 39.2%. Data includes the combined percentages of completed associate's, bachelor's and graduate/professional degrees. Census tracts with scores of 39.3% or higher are high levels of completed college among adults. Census tracts with 39.2% or lower are low. See Figure 3.

Low African American and Latino Populations

African American and Latino populations data from the US Census Bureau's ACS 2013-17 5-Year Estimates. Data is sorted at the census tract level and compared to the national average combined percentage of African American and Latino populations of 29.9%. Areas with low minority concentrations are those with less than 29.9% Black/Hispanic population. Areas with 29.9% or higher are high concentrations. See Figure 4.

High Performing Public Schools

Public School Performance data was gathered from Niche's 2020 Best School Districts in New York ranking. Data is sorted at the school district level with source data from the U.S.

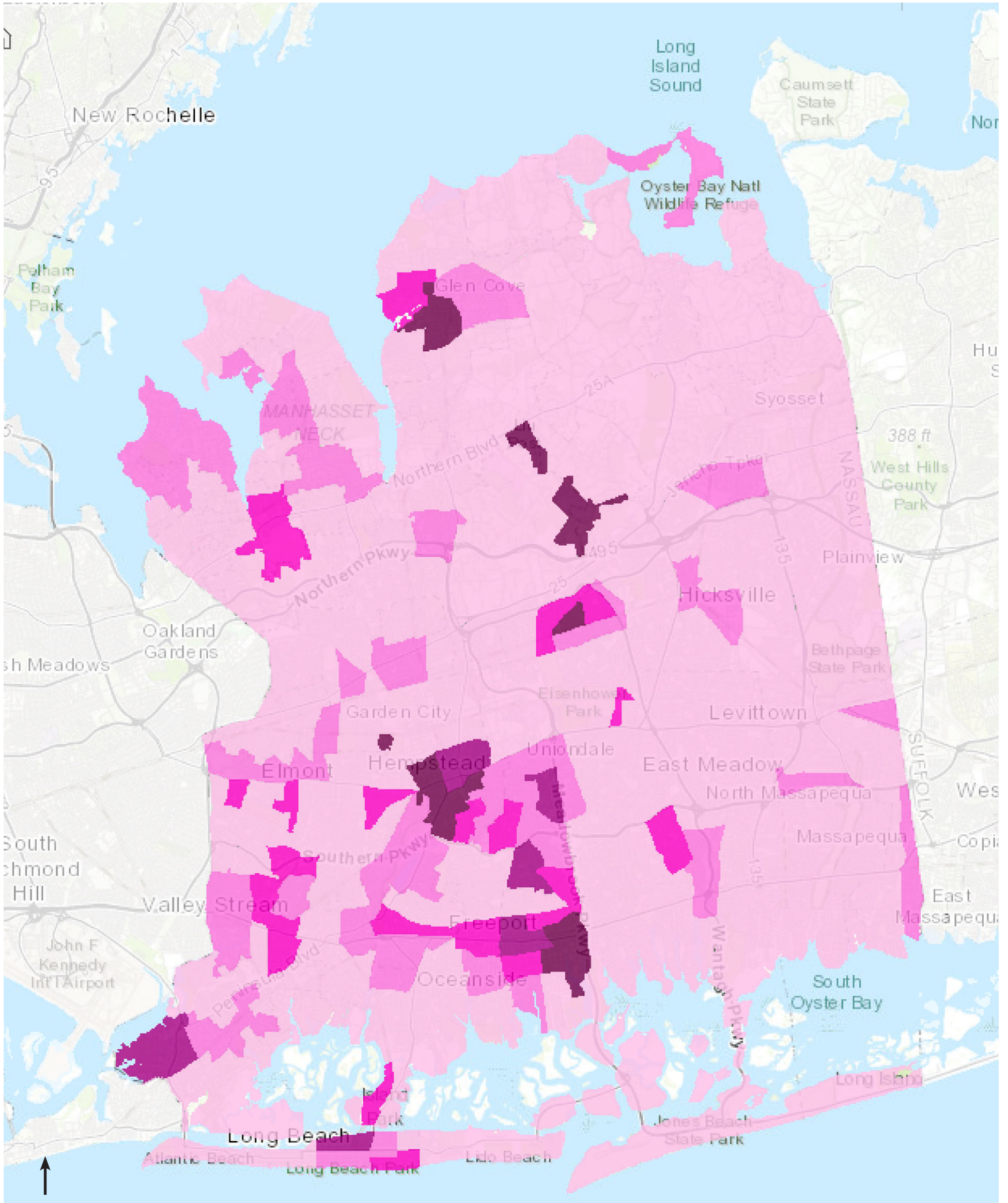
Department of Education along with test scores, college data, and ratings collected from millions of Niche users. For the purpose of this analysis high performing school districts are those scoring an A+ to an A-, average performing schools are those scoring a B+ to a B-, and those scoring C and below are low performing. See Figure 5.

Low Crime Rates

Crime Rate data was gathered from ESRI's 2019 USA Crime Index. Data is sorted at the census tract level with source data from the FBI. Total crime includes both personal and property crimes. The average crime rate in the United States is rated at a score of 100. Based on this average, those census tracts in Nassau County scoring from a 1 to 50 (half of average) will rate as having a very low crime rate. Those with a score of 51 to 100 will be a low crime rate. Those with a score of 101 to 200 will be a medium crime rate. The closer the score is to 0, the lower the crime rate is in the area, and the more it would contribute to a high opportunity area. See Figure 6.

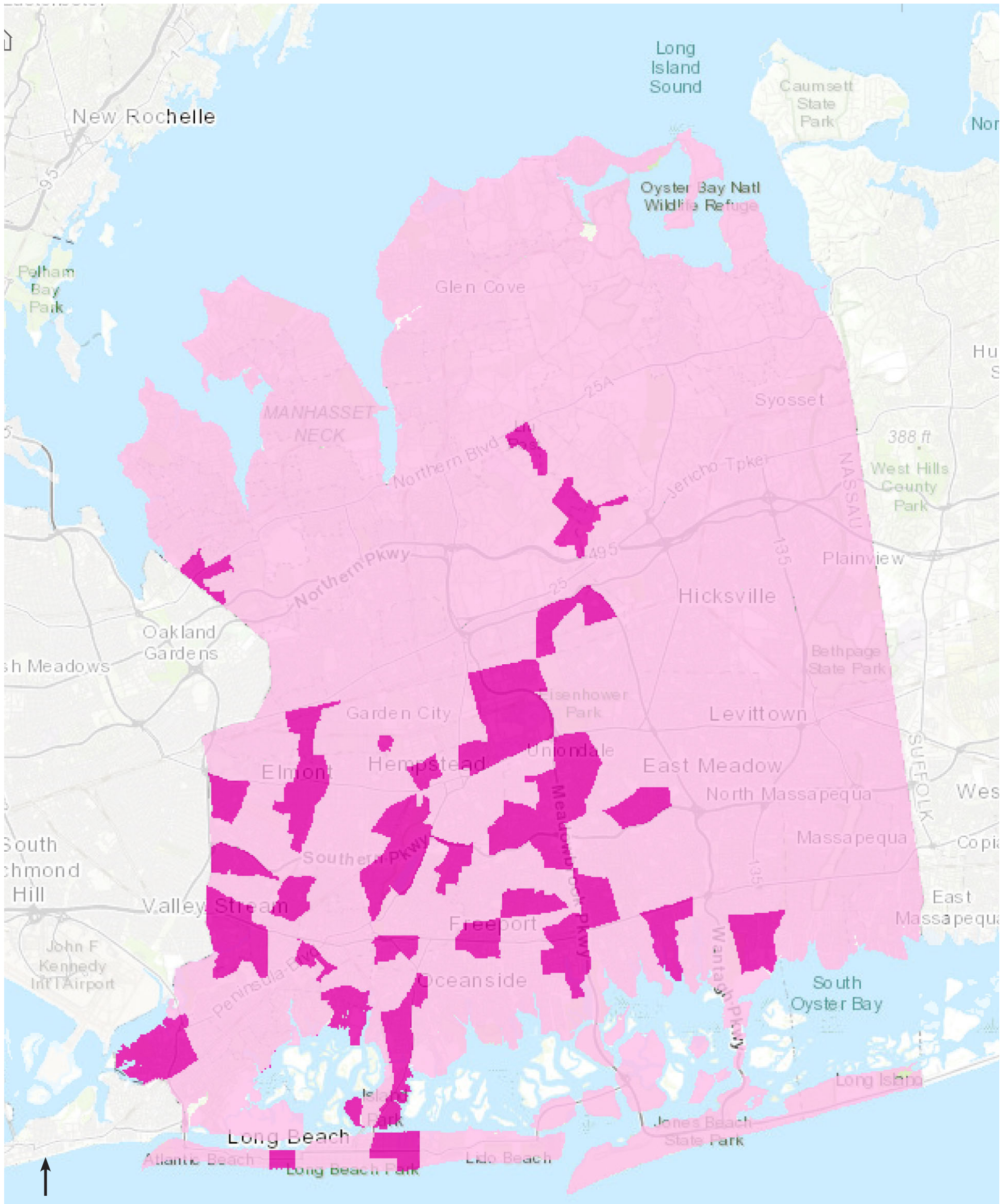
Access to Public Transportation and Employment

Access to Public Transportation and Jobs data was gathered from the EPA Office of Sustainable Communities Access to Jobs and Workers Via Transit Tool. Data is sorted at the block group level with source data from the U.S Census 2010. The data shows the number of jobs accessible by public transportation from each block group. Data includes travel time limited to 45 minutes and is inclusive of wait times, transfers, and walking to/from transit stops. See Figure 7.

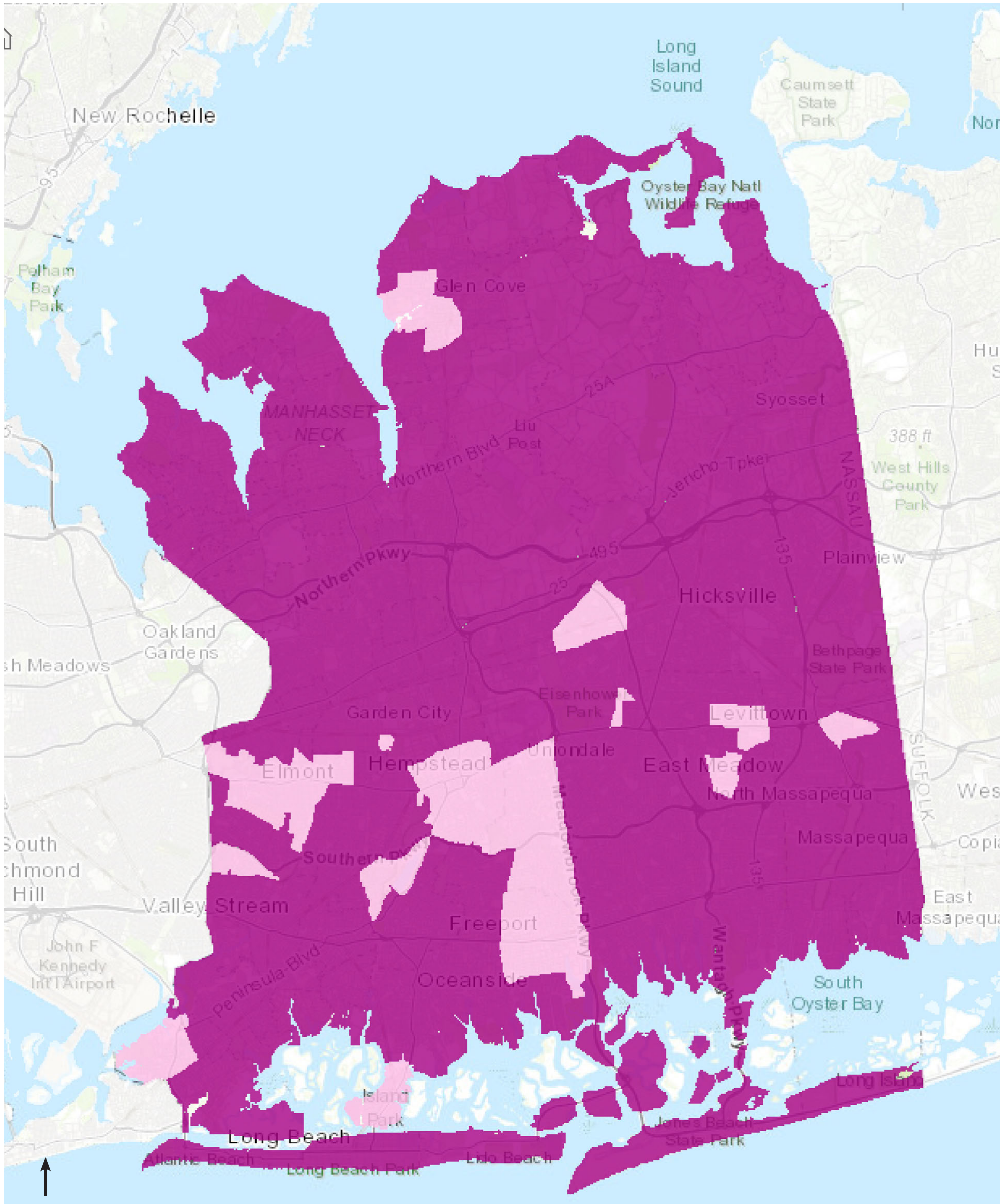


Legend

- Very High Poverty Rate
- Low Poverty Rate
- High Poverty Rate
- Very Low Poverty Rate
- Medium Poverty Rate

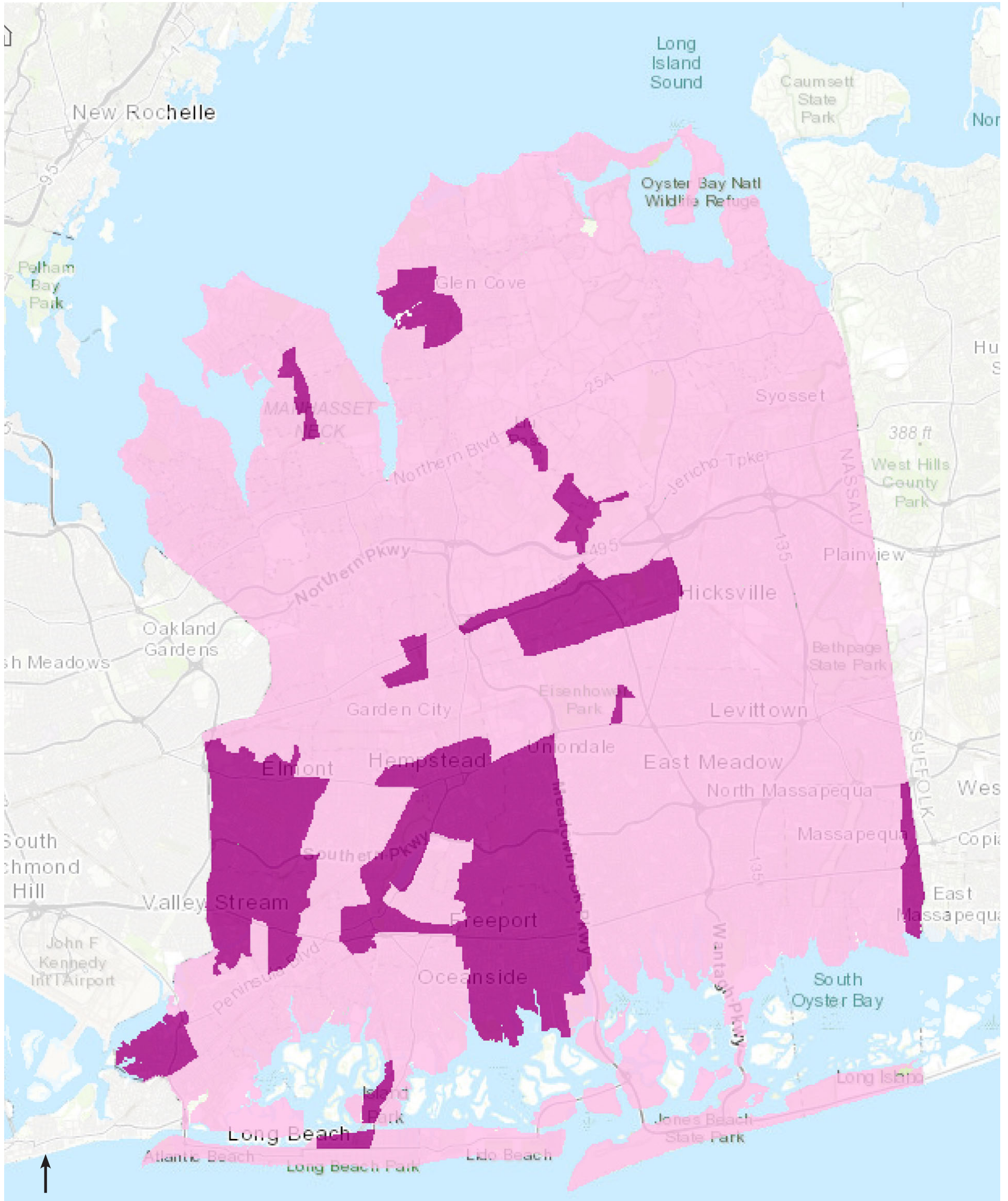


- Legend
- Very High Unemployment
 - Very Low Unemployment

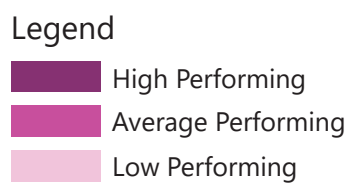
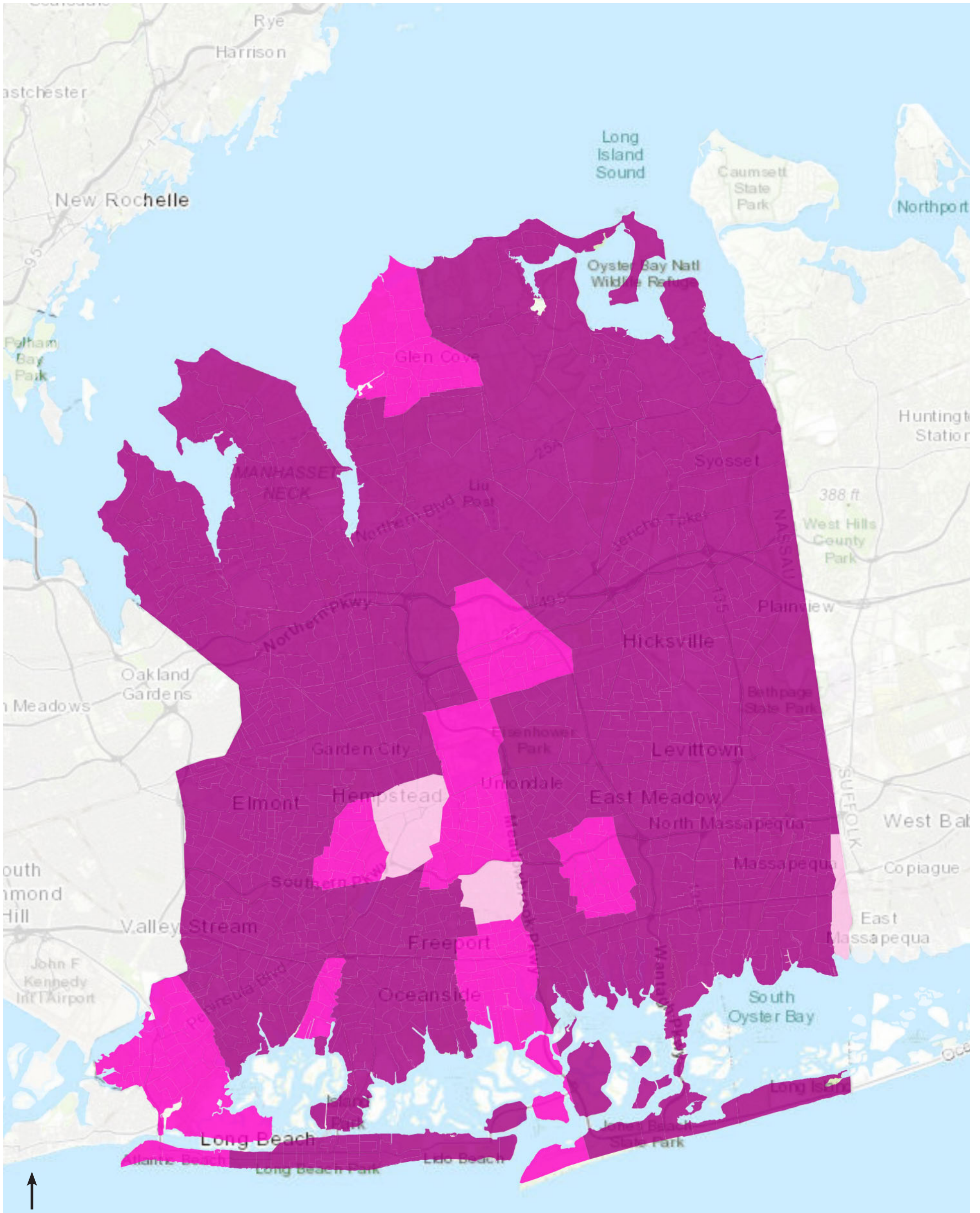


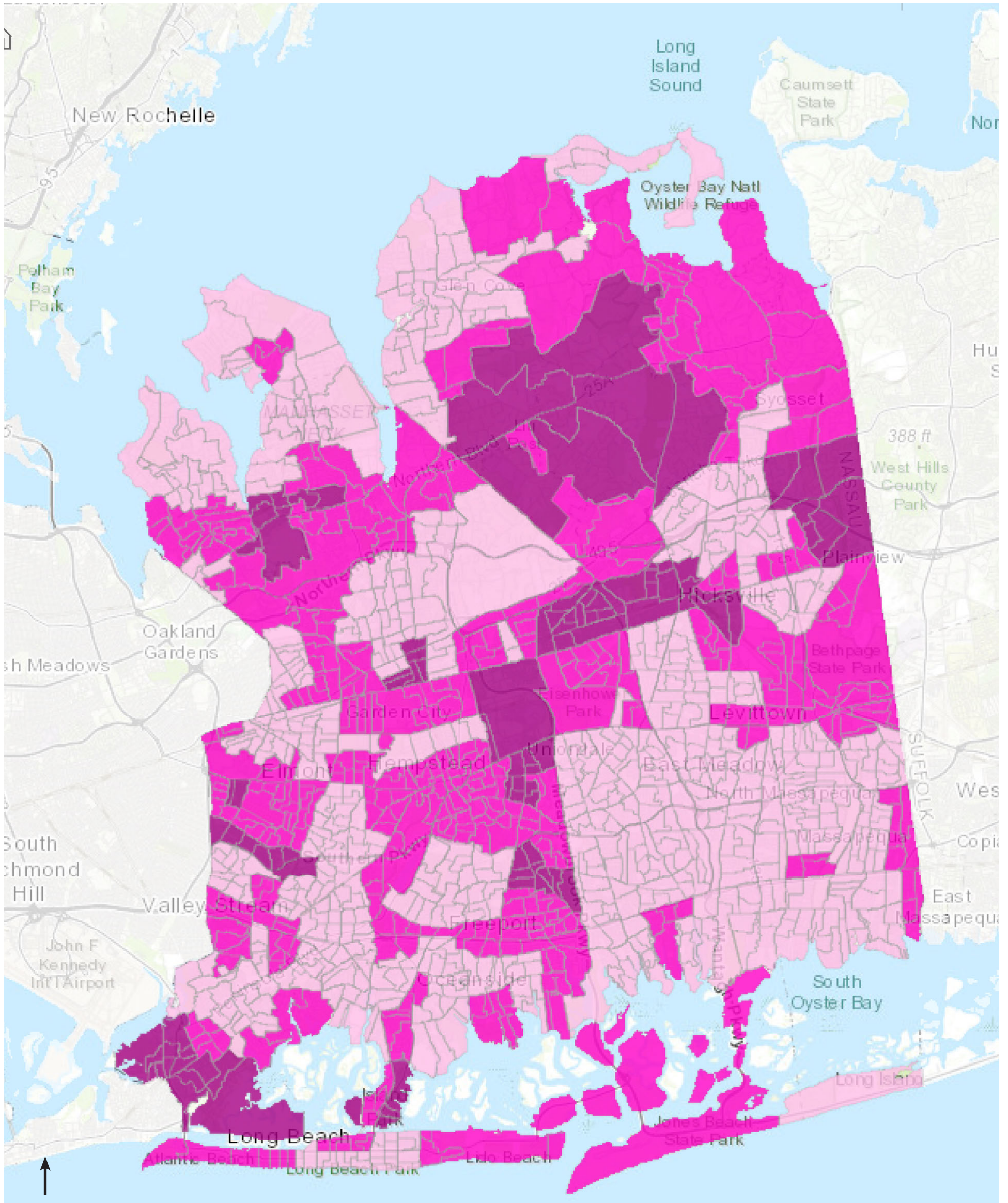
Legend

- High Levels of Completed College
- Low Levels of Completed College



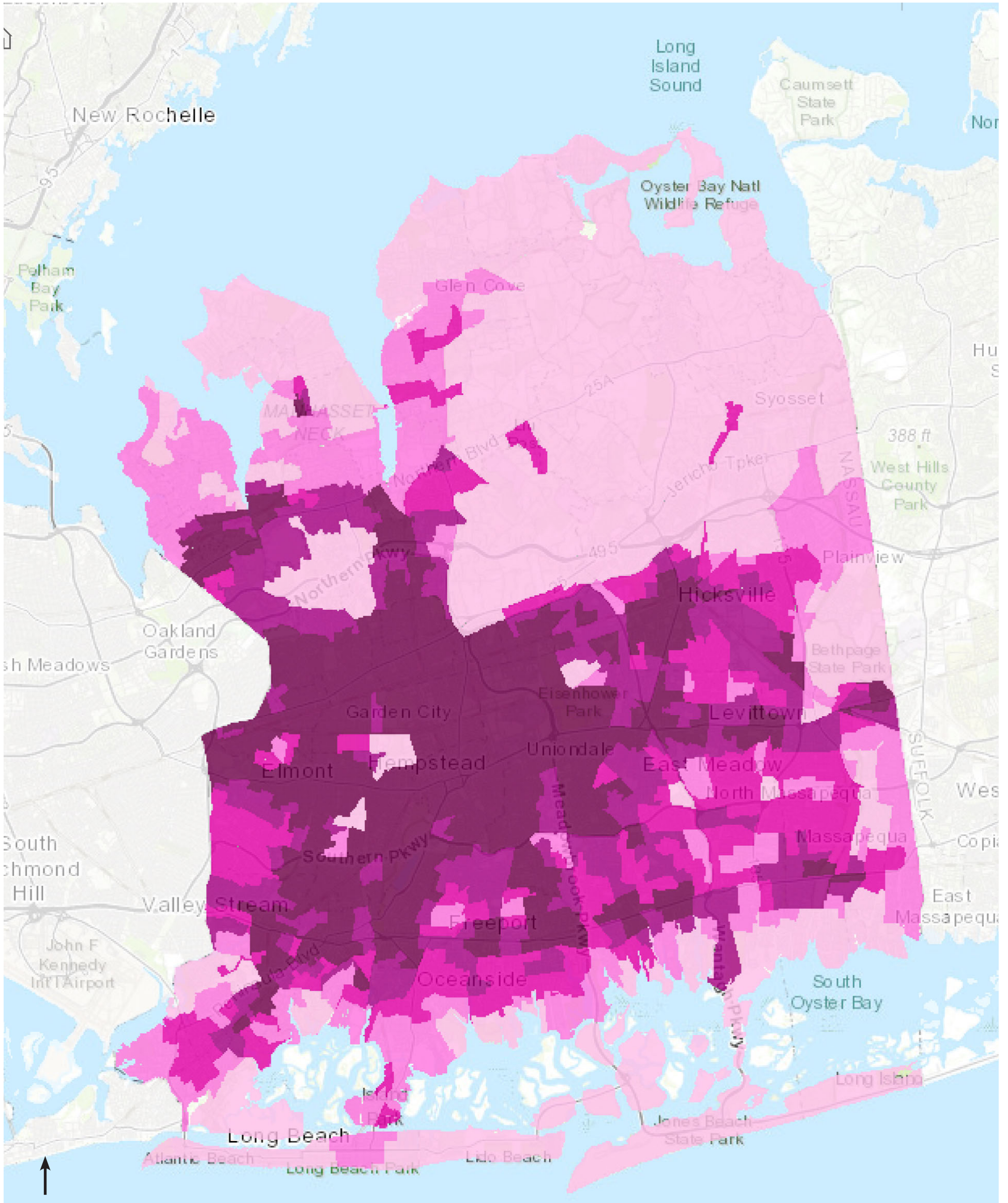
- Legend**
- High Minority Concentration
 - Low Minority Concentration





Legend

- Medium Rate
- Low Rate
- Very Low Rate



Legend

- Over 200,000 jobs
 - 150,000 - 200,000 jobs
 - 100,000 - 150,000 jobs
- 50,000 - 100,000 jobs
 - Less than 50,000 jobs