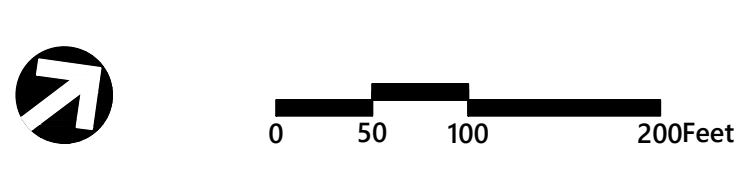




Appendix J

Description

Overall Tree Inventory and Removal Plan

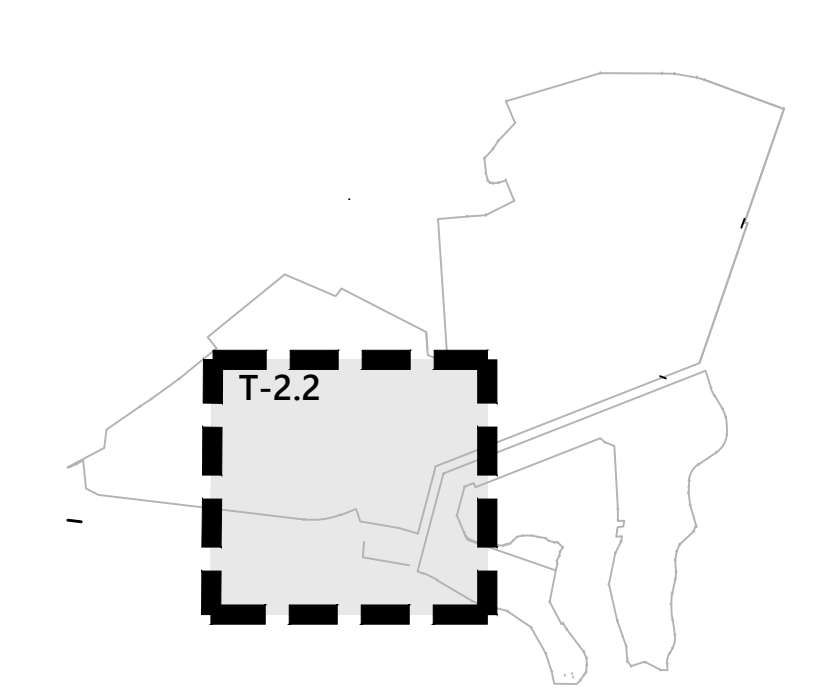


Willow View Estates
 Town of Hempstead, Village of Lawrence
 Village of Woodburgh

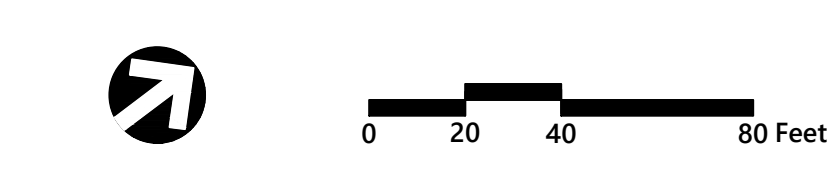
No.	Revision	Date	App'd.
1	0001 PLANSET	12/16/19	AL

Designed by: MO Checked by: CV
 Drawn by: Date: Nov. 15, 2018

Not Approved for Construction
 Drawing Title: **Overall Tree Inventory & Removal Plan**
 Drawing Number: T-1.1



Key
 Not To Scale



Willow View Estates
 Town of Hempstead, Village of Lawrence
 Village of Woodburgh

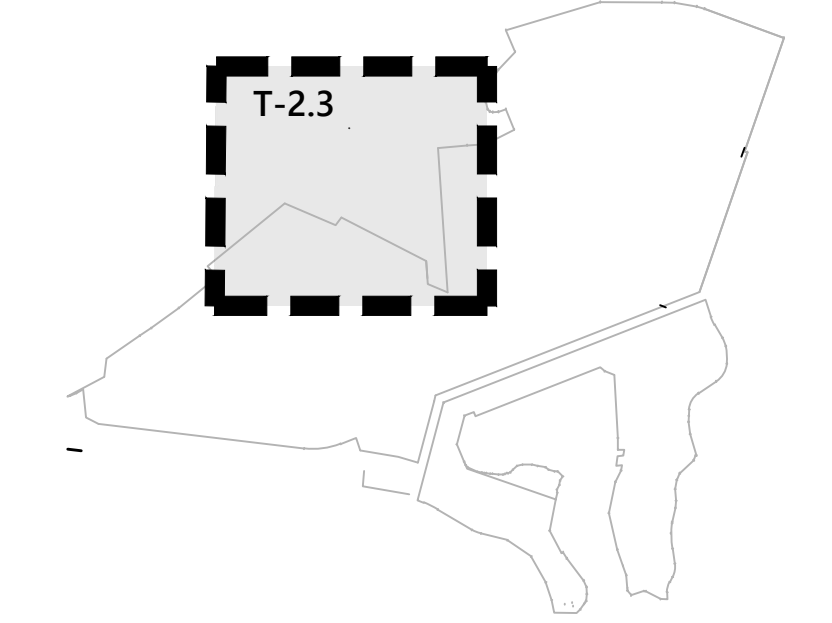
No.	Revision	Date	Appr.
1	000 PLANSET	12/14/19	AL

Drawn by	Checked by
MO	CV

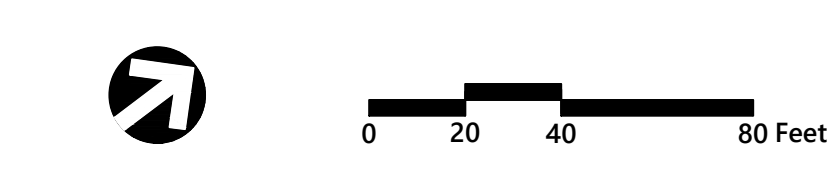
Date: Nov. 15, 2018

Not Approved for Construction
 Drawing Title
**Tree Inventory
 & Removal Plan**

Drawing Number
T-2.2
 Sheet 21 of 27



Key
 Not To Scale



Willow View Estates
 Town of Hempstead, Village of Lawrence
 Village of Woodsburgh

No.	Revision	Date	App'd.
1	000 PLANSET	12/19/19	AL

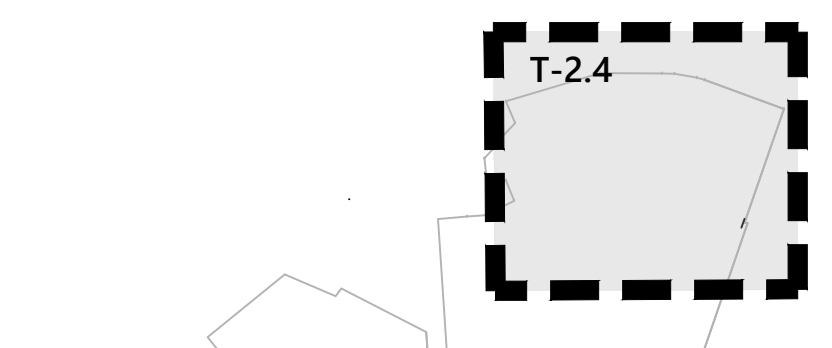
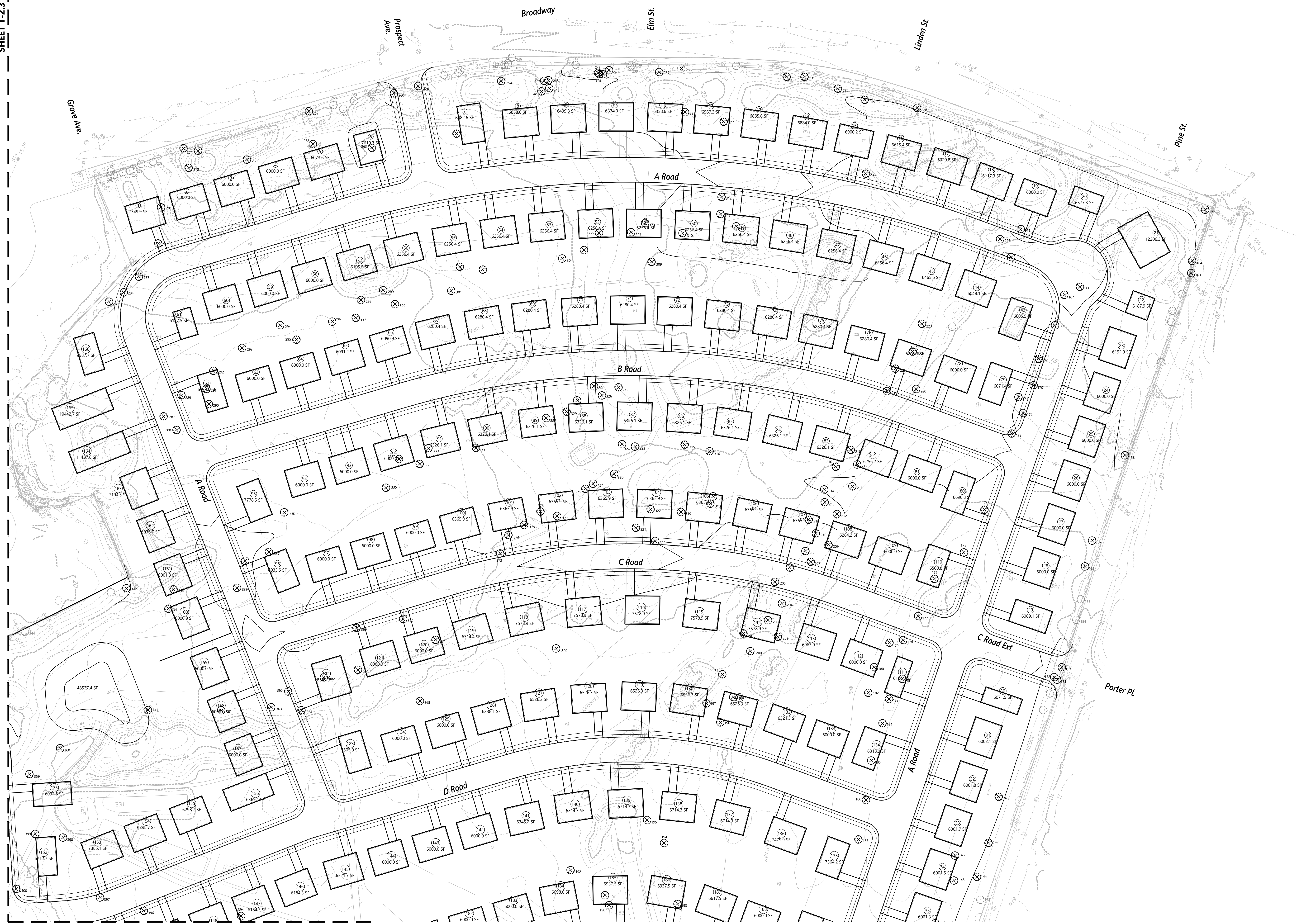
Designed by: MO
 Checked by: CV
 Date: Nov. 15, 2018

Not Approved for Construction
 Tree Inventory
 & Removal Plan

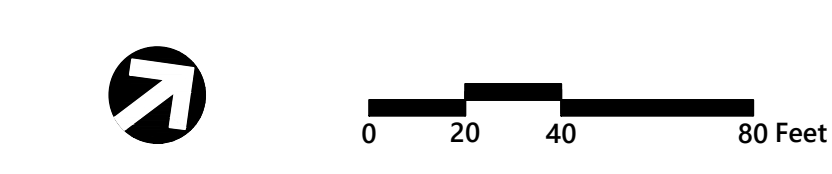
Drawing Title: T-2.3
 Sheet: 22 of 27
 Drawing Number: 26046.01

IF IT IS A VIOLATION OF SECTION 2008 OF ARTICLE 165 OF THE NEW YORK STATE EDUCATION LAW AND/OR ANY OTHER STATE OR FEDERAL STATUTE OR REGULATION THAT GOVERNS THE PRACTICE OF PROFESSIONAL ENGINEERING, THE PERSON IS ACTING UNDER THE DIRECTION OF A LICENSED PROFESSIONAL ENGINEER.

SHEET T-2.3



Key
 Not To Scale



Willow View Estates
 Town of Hempstead, Village of Lawrence
 Village of Woodsburgh

No.	Revision	Date	App'd.
1	0001 PLANSET	12/16/19	AL

Designed by: MO
 Checked by: CV
 Date: Nov. 15, 2018

Not Approved for Construction
 Tree Inventory
 & Removal Plan

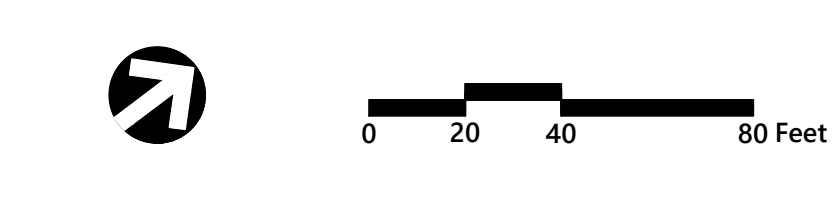
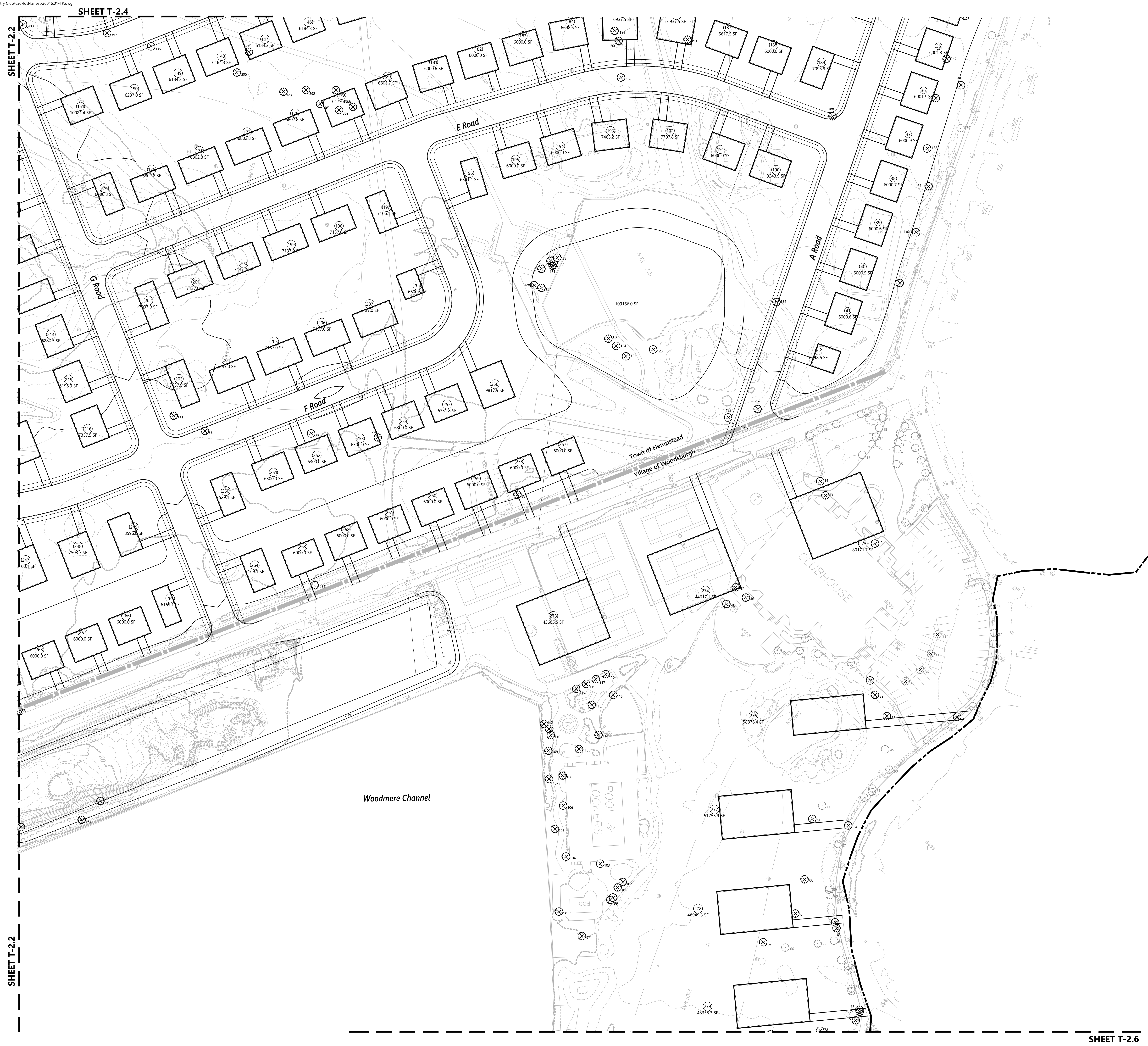
Drawing Number

T-2.4

SHEET T-2.5



Key
 Not To Scale



Willow View Estates
 Town of Hempstead, Village of Lawrence
 Village of Woodburgh

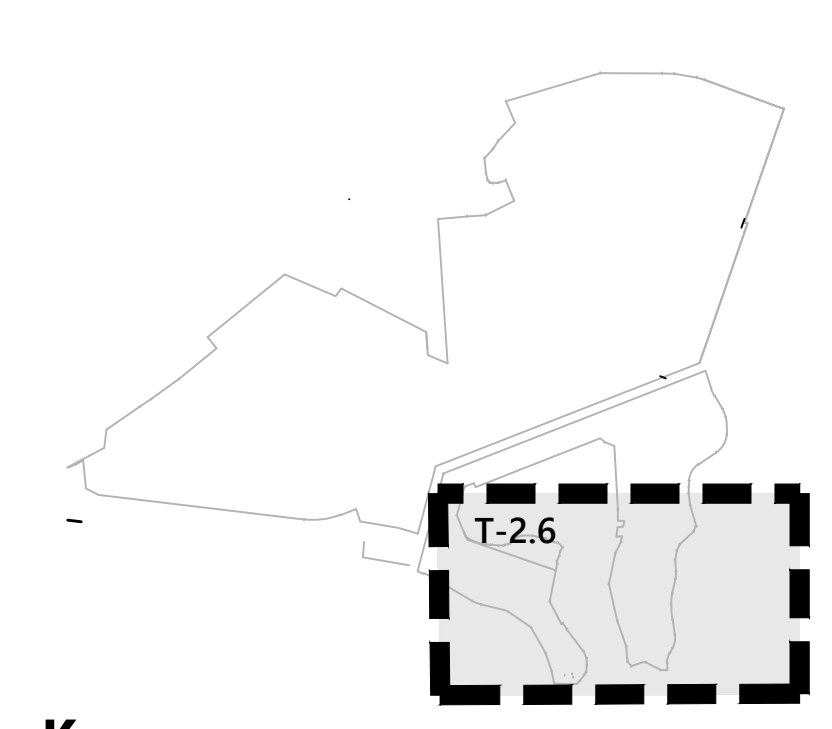
No.	Revision	Date	App'd.
1	0001 PLANSET	12/14/19	AL

Designed by: MO
 Checked by: CV
 Date: Nov. 15, 2018

Not Approved for Construction

**Tree Inventory
 & Removal Plan**

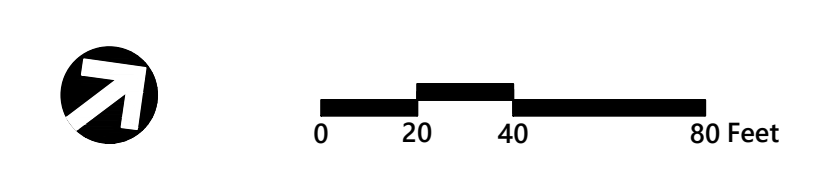
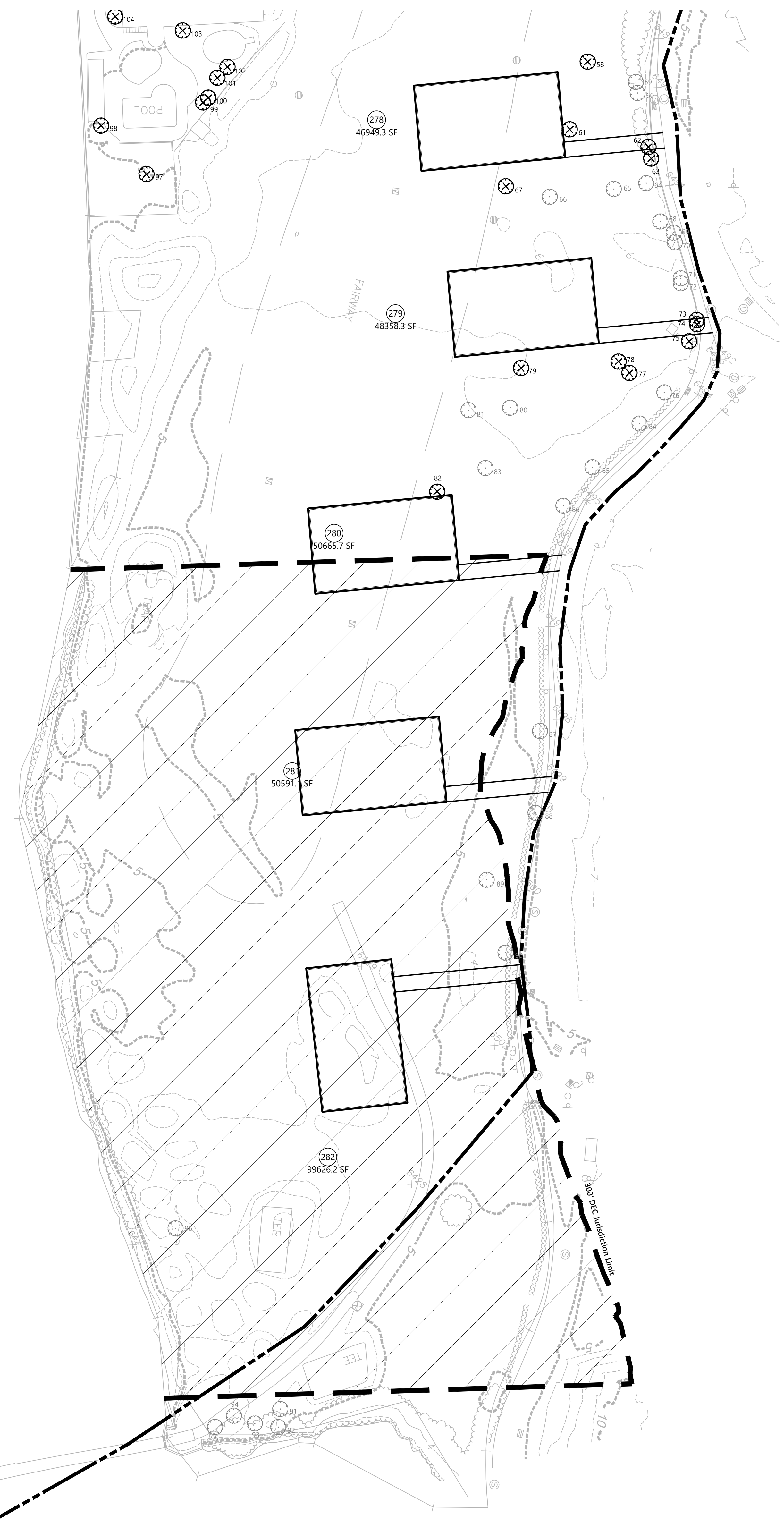
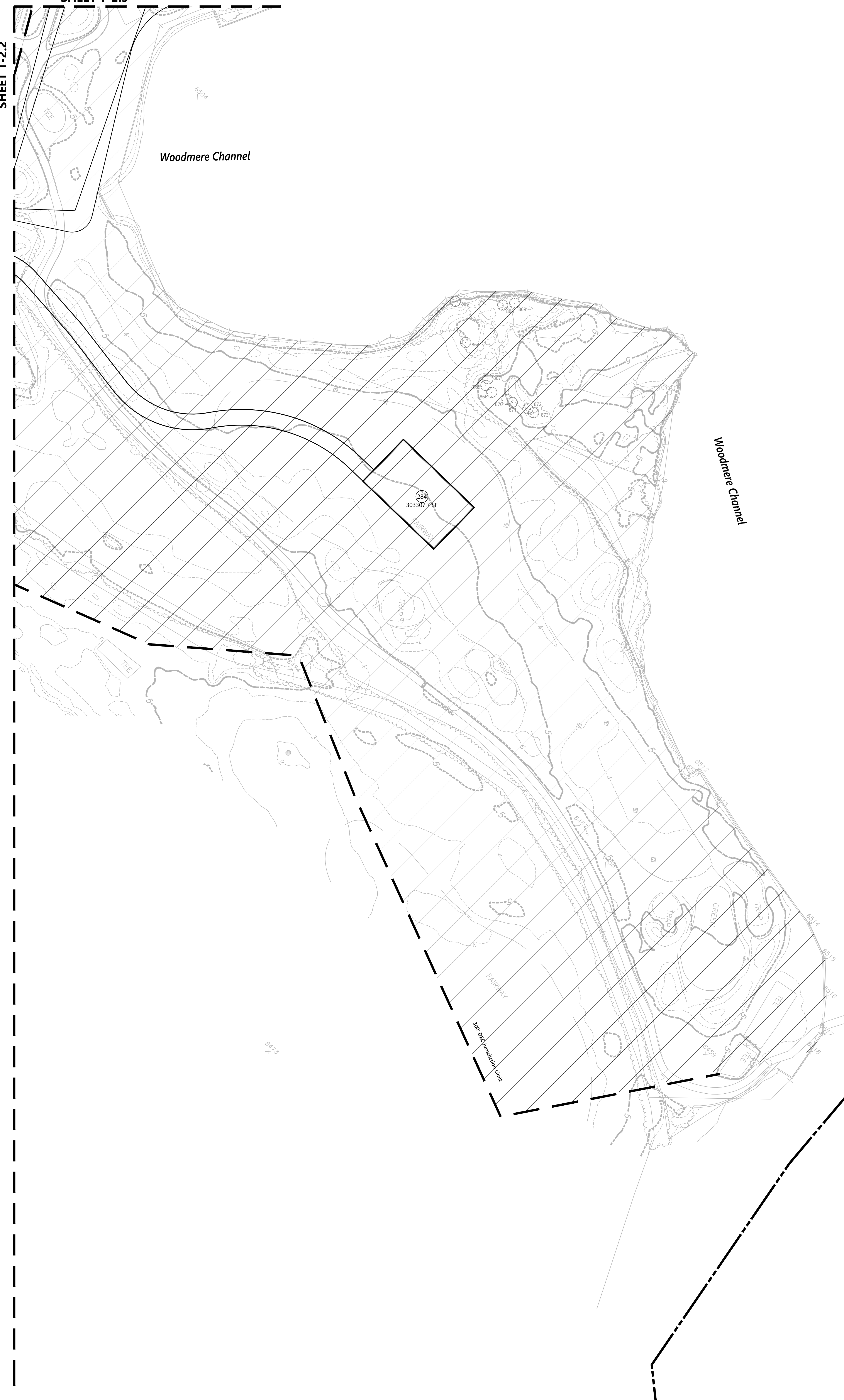
Drawing Number: T-2.5



Key
 Not To Scale

SHEET T-2.5

SHEET T-2.2



Willow View Estates
 Town of Hempstead, Village of Lawrence
 Village of Woodsburgh

No.	Revision	Date	App'd.
1	DRG PLANSET	12/14/19	AL

Designed by: MO
 Checked by: CV
 Date: Nov. 15, 2018

Not Approved for Construction
 Drawing Title: **Tree Inventory & Removal Plan**

Drawing Number
T-2.6
 Sheet 25 of 27

Tree No.	DBH	Botanical Name	Common Name	Condition	Invasive Species	Removal = X
1	4.5	Carpinus betulus	European Hornbeam	Fair	No	
2	5	Carpinus betulus	European Hornbeam	Fair	No	
3	5	Carpinus betulus	European Hornbeam	Fair	No	
4	5.5	Carpinus betulus	European Hornbeam	Fair	No	
5	8.5	Prunus sp.	Cherry	Fair	No	
6	5	Zelkova serrata	Zelkova	Fair	No	
7	6	Zelkova serrata	Zelkova	Fair	No	
8	6	Zelkova serrata	Zelkova	Fair	No	
9	7	Zelkova serrata	Zelkova	Fair	No	
10	25.5	Quercus sp.	Oak	Fair	No	
11	22	Quercus sp.	Oak	Fair	No	
12	20	Quercus sp.	Oak	Fair	No	
13	4	Thuja sp.	Arbovitae	Fair	No	
14	41	Juniperus virginiana	Eastern Redcedar	Fair	No	
15	6	Prunus sp.	Cherry	Fair	No	
16	7.5	Carpinus betulus	European Hornbeam	Fair	No	
17	5.5	Carpinus betulus	European Hornbeam	Fair	No	
18	5.5	Carpinus betulus	European Hornbeam	Fair	No	
19	4.5	Carpinus betulus	European Hornbeam	Fair	No	
20	6	Zelkova serrata	Zelkova	Fair	No	
21	13	Pyrus calleryana	Callery Pear	Fair	No	
22	5.5	Zelkova serrata	Zelkova	Fair	No	
23	16.5	Quercus sp.	Oak	Fair	No	
24	20	Quercus sp.	Oak	Poor	No	
25	16.5	Platanus x acerifolia	London Planetree	Fair	No	
26	8.5	Acer platanoides	Norway Maple	Poor	Yes	
27	16.5	Acer platanoides	Norway Maple	Poor	Yes	
28	16.5	Platanus x acerifolia	London Planetree	Fair	No	
29	15.5	Platanus x acerifolia	London Planetree	Fair	No	
30	19	Platanus x acerifolia	London Planetree	Fair	No	
31	12	Acer platanoides	Norway Maple	Poor	Yes	
32	18.5	Platanus x acerifolia	London Planetree	Fair	No	
33	28	Platanus x acerifolia	London Planetree	Fair	No	
34	10	Zelkova serrata	Zelkova	Fair	No	
35	9.5	Zelkova serrata	Zelkova	Fair	No	
36	8.5	Zelkova serrata	Zelkova	Fair	No	
37	9.5	Zelkova serrata	Zelkova	Fair	No	
38	13	Acer sp.	Maple	Poor	No	
39	17	Prunus sp.	Cherry	Fair	No	
40	19.5	Liquidambar styraciflua	Sweetgum	Fair	No	
41	4	Thuja sp.	Arbovitae	Fair	No	
42	4	Crape Myrtle	Lagerstroemia sp.	Fair	No	
43	9	Prunus sp.	Cherry	Fair	No	
44	4	Crape Myrtle	Lagerstroemia sp.	Fair	No	
45	15	Zelkova serrata	Zelkova	Good	No	
46	17	Zelkova serrata	Zelkova	Fair	No	
47	12.5	Zelkova serrata	Zelkova	Fair	No	
48	13.5	Zelkova serrata	Zelkova	Fair	No	
49	11	Cherry	Cherry	Fair	No	
50	12	Morus sp.	Mulberry	Fair	Yes	
51	MS 6.5/11	Acer platanoides	Norway Maple	Poor	Yes	
52	MS 12/9/5	Morus sp.	Mulberry	Fair	Yes	
53	5	Gleditsia triacanthos	Honeylocust	Poor	No	
54	30	Morus sp.	Mulberry	Fair	Yes	
55	6.5	Zelkova serrata	Zelkova	Fair	No	
56	7.5	Zelkova serrata	Zelkova	Fair	No	
57	7.5	Gleditsia triacanthos	Honeylocust	Fair	No	
58	9.5	Cherry	Cherry	Fair	No	
59	7	Prunus sp.	Cherry	Poor	No	
60	12	Juglans nigra	Black Walnut	Fair	No	
61	21	Salix sp.	Willow	Fair	No	
62	7	Ailanthus altissima	Tree of Heaven	Poor	Yes	
63	5	Ailanthus altissima	Tree of Heaven	Poor	Yes	
64	MS 6.5/8/5	Acer platanoides	Norway Maple	Poor	Yes	
65	16.5	Pyrus calleryana	Callery Pear	Poor	No	
66	12	Juniperus virginiana	Eastern Redcedar	Fair	No	
67	11.5	Acer sp.	Maple	Fair	No	
68	9.5	Ailanthus altissima	Tree of Heaven	Poor	Yes	
69	MS 4.5/6/6	Acer sp.	Maple	Fair	No	
70	MS 5/5/5	Acer sp.	Maple	Fair	No	
71	0	Ailanthus altissima	Tree of Heaven	Poor	Yes	
72	MS 4.5/4.5	Acer sp.	Maple	Fair	No	
73	7.5	Ailanthus altissima	Tree of Heaven	Poor	Yes	
74	9	Robinia pseudoacacia	Black Locust	Fair	Yes	
75	7	Acer sp.	Maple	Fair	No	
76	26	Platanus x acerifolia	London Planetree	Good	No	
77	16.5	Acer sp.	Maple	Fair	No	
78	13	Morus sp.	Mulberry	Fair	Yes	
79	13	Platanus x acerifolia	London Planetree	Fair	No	
80	20.5	Liquidambar styraciflua	Sweetgum	Fair	No	
81	17	Platanus x acerifolia	London Planetree	Fair	No	
82	16.5	Platanus x acerifolia	London Planetree	Fair	No	
83	16	Platanus x acerifolia	London Planetree	Fair	No	
84	21	Platanus x acerifolia	London Planetree	Good	No	
85	27.5	Platanus x acerifolia	London Planetree	Fair	No	
86	29	Platanus x acerifolia	London Planetree	Fair	No	
87	25.5	Platanus x acerifolia	London Planetree	Poor	No	
88	24.5	Platanus x acerifolia	London Planetree	Fair	No	
89	4	Cornus sp.	Dogwood	Fair	No	
90	27	Platanus x acerifolia	London Planetree	Poor	No	
91	6	Ailanthus altissima	Tree of Heaven	Poor	Yes	
92	6	Ailanthus pseudoacacia	Black Locust	Fair	Yes	
93	5	Ailanthus altissima	Tree of Heaven	Poor	Yes	
94	MS 18/16	Ailanthus altissima	Tree of Heaven	Poor	Yes	
95	12	Ailanthus altissima	Tree of Heaven	Poor	Yes	
96	12	Robinia pseudoacacia	Black Locust	Fair	Yes	
97	24	Acer platanoides	Norway Maple	Fair	Yes	
98	12.5	Hedera helix	Honeylocust	Fair	No	
99	5.5	Juniperus virginiana	Eastern Redcedar	Fair	No	
100	MS 5.5/6	Juniperus virginiana	Eastern Redcedar	Fair	No	
101	6.5	Juniperus virginiana	Eastern Redcedar	Fair	No	
102	4.5	Juniperus virginiana	Eastern Redcedar	Fair	No	
103	MS 4.5/5	Magnolia virginiana	Sweetbay Magnolia	Fair	No	
104	11	Gleditsia triacanthos	Honeylocust	Fair	No	
105	9	Gleditsia triacanthos	Honeylocust	Fair	No	
106	10	Gleditsia triacanthos	Honeylocust	Fair	No	
107	4	Juniperus virginiana	Eastern Redcedar	Fair	No	
108	9	Gleditsia triacanthos	Honeylocust	Fair	No	
109	8	Gleditsia triacanthos	Honeylocust	Fair	No	
110	8.5	Salix sp.	Willow	Fair	No	
111	8	Gleditsia triacanthos	Honeylocust	Fair	No	
112	6	Picea pungens	Colorado Spruce	Fair	No	
113	10.5	Prunus sp.	Cherry	Fair	No	
114	4	Prunus sp.	Cherry	Fair	No	
115	MS 7/7	Fraxinus sp.	Ash	Poor	No	
116	7.5	Gleditsia triacanthos	Honeylocust	Fair	No	
117	4.5	Gleditsia triacanthos	Honeylocust	Fair	No	
118	7	Gleditsia triacanthos	Honeylocust	Fair	No	
119	7.5	Gleditsia triacanthos	Honeylocust	Fair	No	
120	8.5	Gleditsia triacanthos	Honeylocust	Fair	No	
121	14	Zelkova serrata	Zelkova	Fair	No	
122	15	Zelkova serrata	Zelkova	Fair	No	
123	27	Zelkova serrata	Zelkova	Fair	No	
124	14.5	Acer platanoides	Norway Maple	Poor	Yes	
125	13	Acer platanoides	Norway Maple	Poor	Yes	
126	13	Acer platanoides	Norway Maple	Poor	Yes	
127	5.5	Acer sp.	Maple	Fair	No	
128	MS 5/5/5/5/5	Prunus sp.	Cherry	Fair	No	
130	9	Thuja sp.	Arbovitae	Fair	No	
131	4	Thuja sp.	Arbovitae	Fair	No	
132	4.5	Thuja sp.	Arbovitae	Fair	No	
133	MS 4/4.5	Acer sp.	Maple	Fair	No	
134	18.5	Acer sp.	Maple	Fair	No	
135	25.5	Platanus x acerifolia	London Planetree	Fair	No	
136	20	Platanus x acerifolia	London Planetree	Fair	No	
137	19.5	Acer sp.	Maple	Fair	No	
138	11	Maple	Maple	Fair	No	
139	7	Picea pungens	Colorado Spruce	Fair	No	
140	24	Liquidambar styraciflua	Sweetgum	Fair	No	
141	27	Liquidambar styraciflua	Sweetgum	Fair	No	
142	21.5	Liquidambar styraciflua	Sweetgum	Fair	No	
143	4.5	Ilex sp.	Holly	Fair	No	
144	24	Liquidambar styraciflua	Sweetgum	Fair	No	
145	22.5	Liquidambar styraciflua	Sweetgum	Fair	No	
146	21	Liquidambar styraciflua	Sweetgum	Fair	No	
147	20.5	Liquidambar styraciflua	Sweetgum	Fair	No	
148	21	Liquidambar styraciflua	Sweetgum	Fair	No	
149	6.5	Picea pungens	Colorado Spruce	Fair	No	
150	7.5	Picea pungens	Colorado Spruce	Fair	No	
151	20	Morus sp.	Mulberry	Fair	No	
152	5.5	Picea pungens	Colorado Spruce	Fair	No	
153	12	Robinia pseudoacacia	Black Locust	Fair	Yes	
154	19	Acer platanoides	Norway Maple	Poor	Yes	
155	19	Acer platanoides	Norway Maple	Poor	Yes	
156	28.5	Liquidambar styraciflua	Sweetgum	Fair	No	
157	19	Liquidambar styraciflua	Sweetgum	Fair	No	
158	18	Picea sp.	Spruce	Fair	No	
159	20	Acer platanoides	Norway Maple	Poor	Yes	
160	23	Acer platanoides	Norway Maple	Poor	Yes	
161	32	Cercis canadensis	Redbud	Good	No	
162	16	Cercis canadensis	Black Locust	Fair	Yes	
163	34	Cercis canadensis	Redbud	Fair	No	
164	28	Acer platanoides	Norway Maple	Poor	No	
165	41	Cercis canadensis	Redbud	Good	No	

Tree No.	DBH	Botanical Name	Common Name	Condition	Invasive Species	Removal = X
166	14.5	Zelkova serrata	Zelkova	Fair	No	
167	16	Zelkova serrata	Zelkova	Fair	No	
168	40	Robinia pseudoacacia	Black Locust	Good	Yes	
169	19	Platanus x acerifolia	London Planetree	Fair	No	
170	26.5	Liquidambar styraciflua	Sweetgum	Fair	No	
171	18.5	Platanus x acerifolia	London Planetree	Fair	No	
172	24	Liquidambar styraciflua	Sweetgum	Fair	No	
173	20	Platanus x acerifolia	London Planetree	Fair	No	
174	51	Salix sp.	Willow	Fair	No	
175	19	Acer sp.	Maple	Fair	No	
176	23.5	Liquidambar styraciflua	Sweetgum	Fair	No	
177	24.5	Liquidambar styraciflua	Sweetgum	Fair	No	
178	18.5	Acer sp.	Maple	Fair	No	
179	18	Liquidambar styraciflua	Sweetgum	Fair	No	
180	18	Acer sp.	Maple	Fair	No	
181	19.5	Acer sp.	Maple	Fair	No	
182	17	Liquidambar styraciflua	Sweetgum	Fair	No	
183	18	Liquidambar styraciflua	Sweetgum	Fair	No	
184	21	Liquidambar styraciflua	Sweetgum	Fair	No	
185	39	Quercus sp.	Oak	Fair	No	
186	45	Acer sp.	Maple	Fair	No	
187	MS 16.5/11	Salix sp.	Willow	Fair	No	
188	25	Liquidambar styraciflua	Sweetgum	Fair	No	
189	37	Quercus sp.	Oak	Fair	No	
190	28	Quercus sp.	Oak	Fair	No	
191	26	Quercus sp.	Oak	Fair	No	
192	23.5	Liquidambar styraciflua	Sweetgum	Fair	No	
193	33	Salix sp.	Willow	Fair	No	
194	28.5	Salix sp.	Willow	Fair	No	
195	34	Salix sp.	Willow	Fair	No	
196	18	Liquidambar styraciflua	Sweetgum	Fair	No	
197	16.5	Liquidambar styraciflua	Sweetgum	Fair	No	
198	26	Liquidambar styraciflua	Sweetgum	Fair	No	
199	24.5	Liquidambar styraciflua	Sweetgum	Fair	No	
200	20.5	Liquidambar styraciflua	Sweetgum	Fair	No	
201	19.5	Liquidambar styraciflua	Sweetgum	Fair	No	
202	21	Liquidambar styraciflua	Sweetgum	Fair	No	
203	21.5	Liquidambar styraciflua	Sweetgum	Fair	No	
204	21	Platanus x acerifolia	London Planetree	Fair	No	
205	20	Platanus x acerifolia	London Planetree	Fair	No	
206	13	Acer sp.	Maple	Fair	No	
207	16	Acer sp.	Maple	Fair	No	
208	23.5	Liquidambar styraciflua	Sweetgum	Fair	No	
209	22.5	Liquidambar styraciflua	Sweetgum	Fair	No	
210	18.5	Acer sp.	Maple	Fair	No	
211	21	Liquidambar styraciflua	Sweetgum	Fair	No	
212	21	Acer sp.	Maple	Fair	No	
213	15.5	Acer sp.	Maple	Fair	No	
214	19	Acer sp.	Maple	Fair	No	
215	22.5	Liquidambar styraciflua	Sweetgum	Fair	No	
216	20.5	Liquidambar styraciflua	Sweetgum	Fair	No	
217	18.5	Acer sp.	Maple	Fair	No	
218	19.5	Liquidambar styraciflua	Sweetgum	Fair	No	
219	30	Robinia pseudoacacia	Black Locust	Fair	Yes	
220	MS 31/22.5	Prunus serotina	Black Cherry	Fair	No	
221	27	Robinia pseudoacacia	Black Locust	Fair	Yes	
222	23	Robinia pseudoacacia	Black Locust	Fair	Yes	
223	21.5	Liquidambar styraciflua	Sweetgum	Fair	No	
224	23.5	Robinia pseudoacacia	Black Locust	Fair	Yes	
225	17	Acer sp.	Oak	Fair	No	
226	25	Quercus sp.	Oak	Fair	No	
227	27.5	Quercus sp.	Oak	Fair	No	
228	13.5	Liquidambar styraciflua	Sweetgum	Fair	No	

Tree No.	DBH	Botanical Name	Common Name	Condition	Invasive Species	Removal = X
661	MS 30/5	Acer platanoides	Norway Maple	Poor	Yes	
662	8	Acer platanoides	Norway Maple	Poor	Yes	
663	4.5	Acer platanoides	Norway Maple	Poor	Yes	
664	7	Acer platanoides	Norway Maple	Poor	Yes	
665	MS 12/11/5	Nyssa sylvatica	Black Gum	Fair	No	
666	4.5	Acer platanoides	Norway Maple	Poor	Yes	
667	12	Carya sp.	Hickory	Fair	No	
668	4.5	Acer platanoides	Norway Maple	Poor	Yes	
669	MS 16/10/11	Nyssa sylvatica	Black Gum	Fair	No	
670	7	Betula sp.	Birch	Fair	No	
671	14	Nyssa sylvatica	Black Gum	Fair	No	
672	10	Acer sp.	Maple	Fair	No	
673	MS 18/18	Nyssa sylvatica	Black Gum	Fair	No	
674	9	Nyssa sylvatica	Black Gum	Fair	No	
675	MS 12/13	Nyssa sylvatica	Black Gum	Fair	No	
676	7	Nyssa sylvatica	Black Gum	Fair	No	
677	25	Acer sp.	Maple	Fair	No	
678	9	Nyssa sylvatica	Black Gum	Fair	No	
679	22	Nyssa sylvatica	Black Gum	Fair	No	
680	MS 12/12	Nyssa sylvatica	Black Gum	Fair	No	
681	13	Nyssa sylvatica	Black Gum	Fair	No	
682	12	Nyssa sylvatica	Black Gum	Fair	No	
683	14	Nyssa sylvatica	Black Gum	Fair	No	
684	MS 13/6/7/13	Nyssa sylvatica	Black Gum	Fair	No	
685	5.5	Nyssa sylvatica	Black Gum	Fair	No	
686	9	Nyssa sylvatica	Black Gum	Fair	No	
687	15	Nyssa sylvatica	Black Gum	Fair	No	
688	MS 8/8	Nyssa sylvatica	Black Gum	Fair	No	
689	8	Nyssa sylvatica	Black Gum	Fair	No	
690	MS 14/12	Nyssa sylvatica	Black Gum	Fair	No	
691	6	Betula sp.	Birch	Dead	No	
692	19	Nyssa sylvatica	Black Gum	Fair	No	
693	10	Nyssa sylvatica	Black Gum	Fair	No	
694	18	Nyssa sylvatica	Black Gum	Fair	No	
695	10	Nyssa sylvatica	Black Gum	Fair	No	
696	25	Acer platanoides	Norway Maple	Poor	Yes	
697	17	Acer platanoides	Norway Maple	Poor	Yes	
698	21	Betula sp.	Birch	Dead	No	
699	6	Nyssa sylvatica	Black Gum	Fair	No	
700	20	Nyssa sylvatica	Black Gum	Fair	No	
701	20	Nyssa sylvatica	Black Gum	Fair	No	
702	9	Quercus sp.	Oak	Fair	No	
703	7	Nyssa sylvatica	Black Gum	Dead	No	
704	8	Nyssa sylvatica	Black Gum	Fair	No	
705	14	Nyssa sylvatica	Black Gum	Fair	No	
706	5	Nyssa sylvatica	Black Gum	Fair	No	
707	4	Betula sp.	Birch	Fair	No	
708	5.5	Nyssa sylvatica	Black Gum	Fair	No	
709	8	Nyssa sylvatica	Black Gum	Fair	No	
710	10	Nyssa sylvatica	Black Gum	Fair	No	
711	MS 16/6	Nyssa sylvatica	Black Gum	Fair	No	
712	11	Nyssa sylvatica	Black Gum	Fair	No	
713	13	Nyssa sylvatica	Black Gum	Fair	No	
714	14	Betula sp.	Birch	Poor	No	
715	10	Nyssa sylvatica	Black Gum	Fair	No	
716	9	Nyssa sylvatica	Black Gum	Fair	No	
717	12	Betula sp.	Birch	Poor	No	
718	5	Nyssa sylvatica	Black Gum	Fair	No	
719	4	Nyssa sylvatica	Black Gum	Fair	No	
720	9	Nyssa sylvatica	Black Gum	Fair	No	
721	28	Nyssa sylvatica	Black Gum	Poor	No	
722	11	Nyssa sylvatica	Black Gum	Fair	No	
723	4	Nyssa sylvatica	Black Gum	Fair	No	
724	5.5	Nyssa sylvatica	Black Gum	Fair	No	
725	13	Nyssa sylvatica	Black Gum	Fair	No	
726	11	Nyssa sylvatica	Black Gum	Dead	No	
727	5	Nyssa sylvatica	Black Gum	Fair	No	
728	16	Acer sp.	Maple	Fair	No	X
729	13	Quercus sp.	Oak	Fair	No	X
730	6	Nyssa sylvatica	Black Gum	Fair	No	X
731	26	Quercus sp.	Oak	Fair	No	X
732	5.5	Nyssa sylvatica	Black Gum	Fair	No	X
733	5	Nyssa sylvatica	Black Gum	Fair	No	X
734	8.5	Nyssa sylvatica	Black Gum	Fair	No	X
735	MS 5/4	Nyssa sylvatica	Black Gum	Fair	No	X
736	25	Nyssa sylvatica	Black Gum	Fair	No	X
737	15	Betula sp.	Birch	Fair	No	X
738	MS 12/11	Betula sp.	Birch	Fair	No	X
739	10	Betula sp.	Birch	Fair	No	X
740	MS 15/12	Acer sp.	Maple	Fair	No	X
741	6.5	Nyssa sylvatica	Black Gum	Fair	No	X
742	4	Betula sp.	Birch	Fair	No	X
743	5	Nyssa sylvatica	Black Gum	Fair	No	X
744	MS 14/7/7	Betula sp.	Birch	Poor	No	X
745	4	Nyssa sylvatica	Black Gum	Fair	No	X
746	4	Nyssa sylvatica	Black Gum	Fair	No	X
747	12	Nyssa sylvatica	Black Gum	Fair	No	X
748	4	Nyssa sylvatica	Black Gum	Fair	No	X
749	12	Betula sp.	Birch	Fair	No	X
750	5	Nyssa sylvatica	Black Gum	Fair	No	X
751	12.5	Nyssa sylvatica	Black Gum	Fair	No	X
752	8	Nyssa sylvatica	Black Gum	Fair	No	X
753	6	Nyssa sylvatica	Black Gum	Fair	No	X
754	5	Nyssa sylvatica	Black Gum	Fair	No	X
755	MS 14/12	Nyssa sylvatica	Black Gum	Fair	No	X
756	14.5	Nyssa sylvatica	Black Gum	Fair	No	X
757	14.5	Quercus sp.	Oak	Fair	No	X
758	12	Betula sp.	Birch	Fair	No	X
759	9	Quercus sp.	Oak	Dead	No	X
760	6	Quercus sp.	Oak	Fair	No	X
761	10	Quercus sp.	Oak	Fair	No	X
762	6.5	Nyssa sylvatica	Black Gum	Fair	No	X
763	14	Betula sp.	Birch	Fair	No	X
764	9	Nyssa sylvatica	Black Gum	Fair	No	X
765	18	Quercus sp.	Oak	Fair	No	X
766	12	Nyssa sylvatica	Black Gum	Fair	No	X
767	15	Betula sp.	Birch	Fair	No	X
768	5.5	Nyssa sylvatica	Black Gum	Fair	No	X
769	16	Quercus sp.	Oak	Fair	No	X
770	7.5	Nyssa sylvatica	Black Gum	Fair	No	X
771	11	Nyssa sylvatica	Black Gum	Fair	No	X
772	4.5	Nyssa sylvatica	Black Gum	Fair	No	X
773	MS 5.5/5.5	Nyssa sylvatica	Black Gum	Fair	No	X
774	5	Nyssa sylvatica	Black Gum	Fair	No	X
775	10	Nyssa sylvatica	Black Gum	Fair	No	X
776	MS 5/9	Nyssa sylvatica	Black Gum	Fair	No	X
777	6.5	Nyssa sylvatica	Black Gum	Fair	No	X
778	MS 14/7	Nyssa sylvatica	Black Gum	Fair	No	X
779	7	Nyssa sylvatica	Black Gum	Fair	No	X
780	MS 4.5/7	Nyssa sylvatica	Black Gum	Fair	No	X
781	8	Nyssa sylvatica	Black Gum	Fair	No	X
782	10	Nyssa sylvatica	Black Gum	Fair	No	X
783	18	Nyssa sylvatica	Black Gum	Fair	No	X
784	5	Nyssa sylvatica	Black Gum	Fair	No	X
785	11	Nyssa sylvatica	Black Gum	Fair	No	X
786	11.5	Nyssa sylvatica	Black Gum	Fair	No	X
787	9	Nyssa sylvatica	Black Gum	Fair	No	X
788	7	Nyssa sylvatica	Black Gum	Fair	No	X
789	4.5	Nyssa sylvatica	Black Gum	Fair	No	X
790	8.5	Nyssa sylvatica	Black Gum	Fair	No	X
791	8.5	Nyssa sylvatica	Black Gum	Fair	No	X
792	9	Nyssa sylvatica	Black Gum	Fair	No	X
793	MS 12/12	Populus sp.	Cottonwood	Fair	No	X
794	8	Nyssa sylvatica	Black Gum	Fair	No	X
795	9.5	Nyssa sylvatica	Black Gum	Fair	No	X
796	MS 13/5	Nyssa sylvatica	Black Gum	Fair	No	X
797	5	Nyssa sylvatica	Black Gum	Fair	No	X
798	7	Nyssa sylvatica	Black Gum	Fair	No	X
799	5.5	Nyssa sylvatica	Black Gum	Fair	No	X
800	5.5	Nyssa sylvatica	Black Gum	Fair	No	X
801	10	Nyssa sylvatica	Black Gum	Fair	No	X
802	11	Nyssa sylvatica	Black Gum	Fair	No	X
803	4.5	Nyssa sylvatica	Black Gum	Fair	No	X
804	6	Nyssa sylvatica	Black Gum	Fair	No	X
805	6.5	Nyssa sylvatica	Black Gum	Fair	No	X
806	4	Nyssa sylvatica	Black Gum	Fair	No	X
807	9	Nyssa sylvatica	Black Gum	Poor	No	X
808	15	Nyssa sylvatica	Black Gum	Fair	No	X
809	22	Nyssa sylvatica	Black Gum	Fair	No	X
810	13	Prunus sp.	Cherry	Fair	No	X
811	14	Nyssa sylvatica	Black Gum	Fair	No	X
812	4.5	Nyssa sylvatica	Black Gum	Fair	No	X
813	9.5	Nyssa sylvatica	Black Gum	Fair	No	X
814	13	Nyssa sylvatica	Black Gum	Fair	No	X
815	5	Nyssa sylvatica	Black Gum	Fair	No	X
816	7.5	Nyssa sylvatica	Black Gum	Fair	No	X
817	46	Acer sp.	Maple	Fair	No	X
818	MS 13/11	Nyssa sylvatica	Black Gum	Fair	No	X
819	16	Nyssa sylvatica	Black Gum	Fair	No	X
820	6.5	Nyssa sylvatica	Black Gum	Fair	No	X
821	10	Prunus sp.	Cherry	Fair	No	X
822	20	Nyssa sylvatica	Black Gum	Fair	No	X
823	MS 12/21	Nyssa sylvatica	Black Gum	Fair	No	X
824	7	Prunus sp.	Cherry	Poor	No	X
825	14	Prunus sp.	Cherry	Fair	No	X

Tree No.	DBH	Botanical Name	Common Name	Condition	Invasive Species	Removal = X
826	MS 6/12/11	Acer sp.	Maple	Fair	No	
827	12	Acer sp.	Maple	Fair	No	
828	26	Quercus sp.	Oak	Fair	No	
829	8	Platanus acerifolia	London Planetree	Fair	No	
830	MS 26/12	Acer sp.	Maple	Fair	No	
831	18	Nyssa sylvatica	Black Gum	Fair	No	
832	18	Nyssa sylvatica	Black Gum	Fair	No	
833	10	Prunus sp.	Cherry	Fair	No	
834	7	Nyssa sylvatica	Black Gum	Fair	No	
835	7	Prunus sp.	Cherry	Fair	No	
836	15	Quercus sp.	Oak	Fair	No	
837	MS 10/10	Nyssa sylvatica	Black Gum	Fair	No	
838	17	Prunus sp.	Cherry	Fair	No	
839	7	Robinia pseudoacacia	Black Locust	Fair	Yes	
840	MS 18/18	Robinia pseudoacacia	Black Locust	Fair	Yes	
841	7	Betula sp.	Birch	Fair	No	
842	12	Quercus sp.	Oak	Fair	No	
843	15	Nyssa sylvatica	Black Gum	Fair	No	
844	25	Nyssa sylvatica	Black Gum	Fair	No	
845	7	Nyssa sylvatica	Black Gum	Fair	No	
846	14	Nyssa sylvatica	Black Gum	Fair	No	
847	7	Nyssa sylvatica	Black Gum	Fair	No	
848	18	Nyssa sylvatica	Black Gum	Fair	No	
849	21	Acer platanoides	Norway Maple	Fair	Yes	
850	17	Acer sp.	Maple	Fair	No	
851	12	Robinia pseudoacacia	Black Locust	Fair	Yes	
852	MS 23/10	Acer sp.	Maple	Fair	No	
* 853	11	Robinia pseudoacacia	Black Locust	Fair	Yes	
* 854	7	Allanthus altissima	Tree of Heaven	Poor	Yes	
* 855	MS 9/10	Allanthus altissima	Tree of Heaven	Poor	Yes	
* 856	29	Prunus sp.	Cherry	Fair	No	
* 857	14	Populus sp.	Cottonwood	Fair	No	
858	13	Prunus sp.	Cherry	Fair	No	
859	15	Robinia pseudoacacia	Black Locust	Fair	Yes	
860	5.5	Robinia pseudoacacia	Black Locust	Fair	Yes	
861	4.5	Robinia pseudoacacia	Black Locust	Fair	Yes	
862	4	Allanthus altissima	Tree of Heaven	Poor	Yes	X
* 863	9	Prunus sp.	Cherry	Fair	No	
* 864	6.5	Salix sp.	Willow	Fair	No	
* 865	6.5	Betula sp.	Birch	Fair	No	
* 866	10	Betula sp.	Birch	Fair	No	
* 867	10	Betula sp.	Birch	Fair	No	
* 868	12	Betula sp.	Birch	Fair	No	
* 869	14	Nyssa sylvatica	Black Gum	Fair	No	
* 870	9	Betula sp.	Birch	Fair	No	
* 871	4	Betula sp.	Birch	Fair	No	
* 872	10	Betula sp.	Birch	Fair	No	
* 873	6.5	Nyssa sylvatica	Black Gum	Fair	No	
874	14	Robinia pseudoacacia	Black Locust	Fair	Yes	X
875	4	Robinia pseudoacacia	Black Locust	Fair	Yes	X
876	MS 18/18	Robinia pseudoacacia	Black Locust	Fair	Yes	X
877	7	Robinia pseudoacacia	Black Locust	Fair	Yes	X
878	8	Populus sp.	Cottonwood	Fair	No	X
879	8	Robinia pseudoacacia	Black Locust	Fair	Yes	X

Notes

General

- ALL MEASURES WILL BE REVIEWED AFTER INSTALLATION AND APPROVED BY LANDSCAPE ARCHITECT/ CERTIFIED ARBORIST REPRESENTING OWNER AND NASSAU COUNTY.
- ALL TREE PROTECTION MEASURES MUST BE IN PLACE PRIOR TO COMMENCEMENT OF DEMOLITION, SITE CLEARING OR CONSTRUCTION AND MAINTAINED THROUGHOUT CONSTRUCTION.
- REFER TO TREE INVENTORY & REMOVAL PLAN FOR SPECIFIC RECOMMENDATIONS FOR EACH TREE.
- CRITICAL ROOT ZONE (CRZ) IS DEFINED AS A ONE FOOT RADIUS FROM THE BASE OF THE TREE'S TRUNK FOR EACH ONE INCH OF TREE'S DIAMETER AT 4.5 FEET ABOVE GRADE (DBH). EXAMPLE FOR 40" DBH THE CRZ IS 40" RADIUS. MINIMIZE ALL IMPACT TO CRZ FOR TREES TO REMAIN TO ESSENTIAL CONSTRUCTION OPERATIONS. NOTE THAT 85% OF THE TREE ROOT MASS IS LOCATED WITHIN THE CRZ AND MOST OF THE ROOTS ARE WITHIN THE TOP 18 INCHES OF SOIL.
- MINIMIZE CUTTING OR DISTURBING TREE ROOTS WITHIN CRZ. WHERE TREE ROOTS MUST BE CUT, IT IS TO BE WITH CLEAN SHARP HAND HELD PRUNER OR PRUNING SAW TO MAKE SHARP CLEAN CUTS TO ENCOURAGE WOUND CLOSURE (NOT TORN, RIPPED, OR GRUBBED). PRUNE AWAY JAGGED ROOTS WHERE REQUIRED. COVER EXPOSED ROOTS WITH WET BURLAP TO PREVENT THEM FROM DRYING OUT IN HOT DRY CONDITIONS. NOTE THAT INJURY CAN OCCUR WITHIN THIRTY MIN