

FIGURE A
 LAND & TAX MAP
 SECTION 42 BLOCK A

HAZEN AND SAWYER | **ARCADIS**
 Environmental Engineers & Scientists | Infrastructure Water Environment Buildings
 a joint venture

DATE: MAY 2014



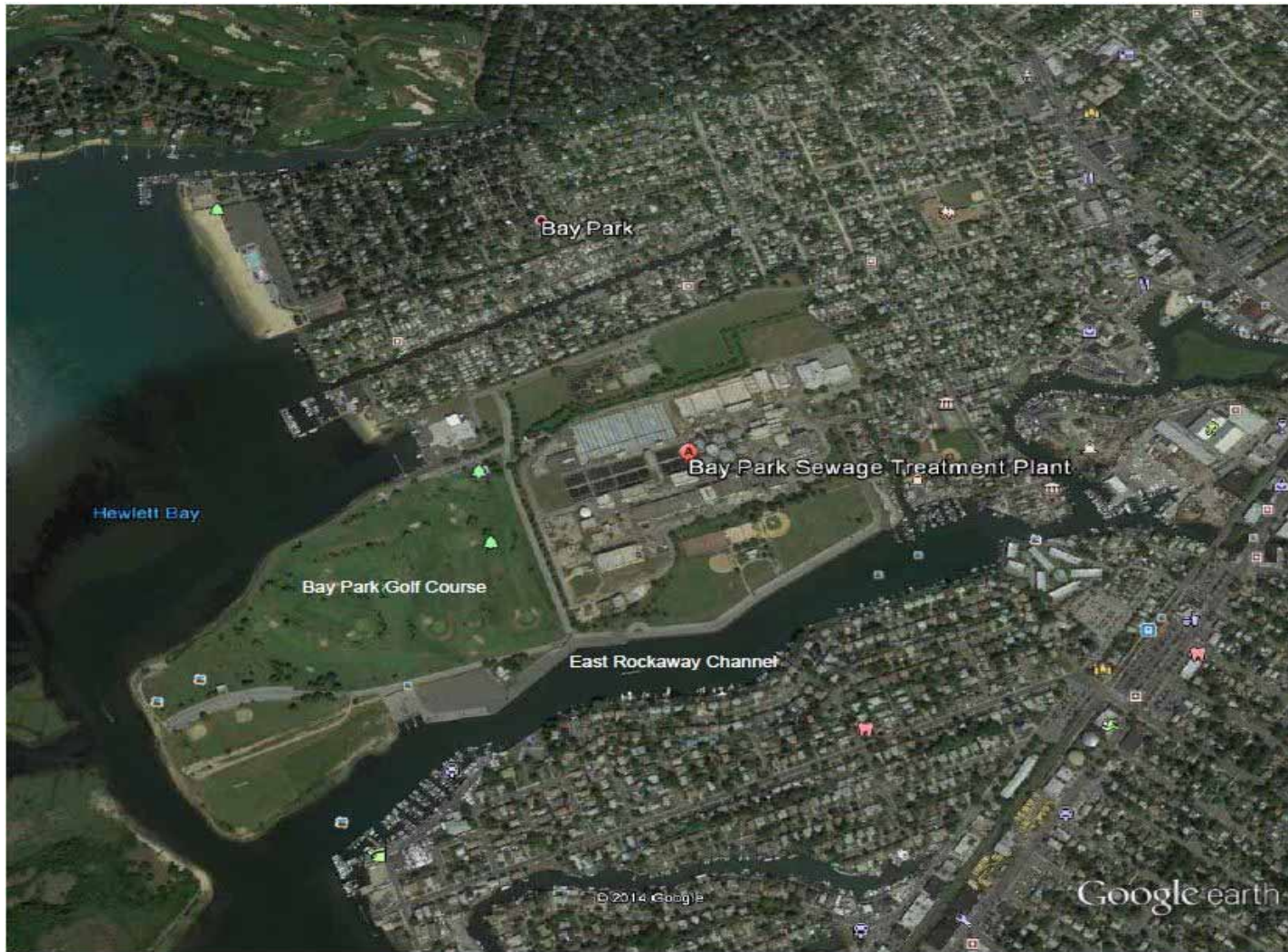


FIGURE B
BAY PARK SEWAGE TREATMENT PLANT
AERIAL VIEW





FIGURE C
PROPOSED ALTERNATIVE – PERIMETER FLOOD
PROTECTION BERM AND FLOOD WALL
PROPOSED SITE LAYOUT





FIGURE C1
EXISTING CONDITIONS: 2nd Avenue





FIGURE C2
RENDERING: 2ND Avenue
with Proposed Levee and Swale





FIGURE C3
EXISTING CONDITIONS: 3rd Avenue





FIGURE C4
RENDERING: 3rd Avenue
with Proposed Hybrid Levee and Swale





FIGURE C5
EXISTING CONDITIONS: North Gate and Guard House





FIGURE C6
RENDERING: Proposed North Gate





FIGURE C7
RENDERING: Proposed North Gate
Interior Plant View with Guard House





FIGURE C8
EXISTING CONDITIONS: South Gate





FIGURE C9
RENDERING: Proposed Floodwall and South Gate





FIGURE C10
Map of APE and Viewsheds



Buildings and Structures

1. NCDPW Testing Laboratory
2. Power Generation Facility
3. Sludge Pump Control Center
4. Sludge Control Building
5. Tunnel Access Structure
6. Sludge Thickening Facility
7. Plant Maintenance Building
8. Sewer Maintenance Building
- 8a. Sewer Maintenance Storage Building
9. Effluent Screening and Disinfection Building
10. Fire Protection Building
11. Sludge Dewatering Facility
12. Unit Substation No. 3
13. Effluent Pumping Facility
14. Operations Building
15. Aeration Building No. 2
16. Aeration Building No. 1
17. Return Activated Sludge Building
- 18a. Primary Pump Station No. 1
- 18b. Primary Pump Station No. 2
- 18c. Primary Pump Station No. 3
19. Primary Odor Control Building
20. Grit Building
21. Scavenger Waste/Septage Receiving Facility
- 21a. Bar Screen Facility
- 21b. Miscellaneous Odor Control Facility
22. Main Building - Central Heating Facility
23. Main Building - Personnel Area
- 23a. Main Building - Plant Administrative Offices
24. Fourth Avenue Gatehouse
25. Construction Administration Building
26. West Central Warehouse
27. East Central Warehouse
- 28a. Interim Storage Building
- 29a. Primary Effluent Building (PSTs 1-4)
- 29b. Primary Effluent Building (PSTs 5-8)
30. West Interim Heating Facility
31. Primary Influent Distribution Structure
32. Aeration Tanks (Nos. 1-5)
33. Final Settling Tanks (Nos. 1-10)
34. Aeration Tanks Odor Control Building
35. Fire Protection Water Storage Tank
36. Potable Water Meter House
37. SSDF Interim Heating Facility
38. Unit Substation No. 6
39. Sludge Digestion System MCC Building
40. Primary Sludge Digesters (Nos. 1-4)
41. Secondary Sludge Digesters (Nos. 1-2)
42. Sludge Storage Tanks (Nos. 1-2)
43. Digest Gas Storage Sphere
44. Electrical Sub-Station
45. Unit Substation No. 5
46. Primary Settling Tanks (Nos. 1-8)
47. Waste Gas Burner Structure
48. Fifth Avenue gatehouse
49. Propane Storage Area
50. Cold Storage Building

Legend

Flood Walls/Elevation of Critical Equipment

Dry Flood Proofing



FIGURE D
 ALTERNATIVE 3 – MITIGATE ALL SYSTEMS
 AND EQUIPMENT INDIVIDUALLY
 PROPOSED SITE LAYOUT



DATE: MAY 2014

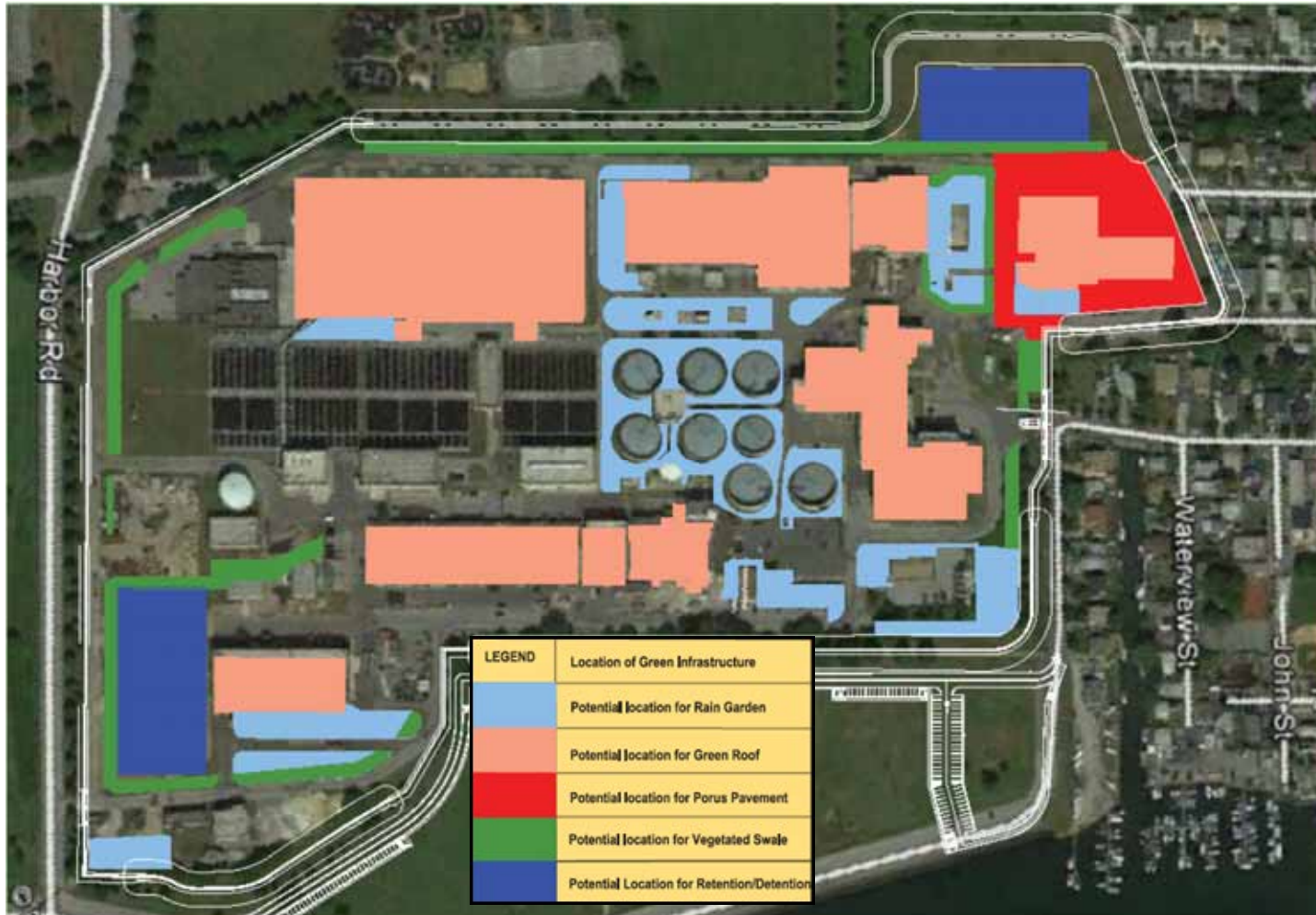


FIGURE E
PROPOSED GREEN INFRASTRUCTURE





U.S. Fish and Wildlife Service
National Wetlands Inventory

Bay Park STP

Sep 24, 2013



Wetlands

-  Freshwater Emergent
-  Freshwater Forested/Shrub
-  Estuarine and Marine Deepwater
-  Estuarine and Marine
-  Freshwater Pond
-  Lake
-  Riverine
-  Other

User Remarks:

This map is for general reference only. The US Fish and Wildlife Service is not responsible for the accuracy or currentness of the base data shown on this map. All wetlands related data should be used in accordance with the layer metadata found on the Wetlands Mapper web site.

FIGURE F
NATIONAL WETLANDS INVENTORY



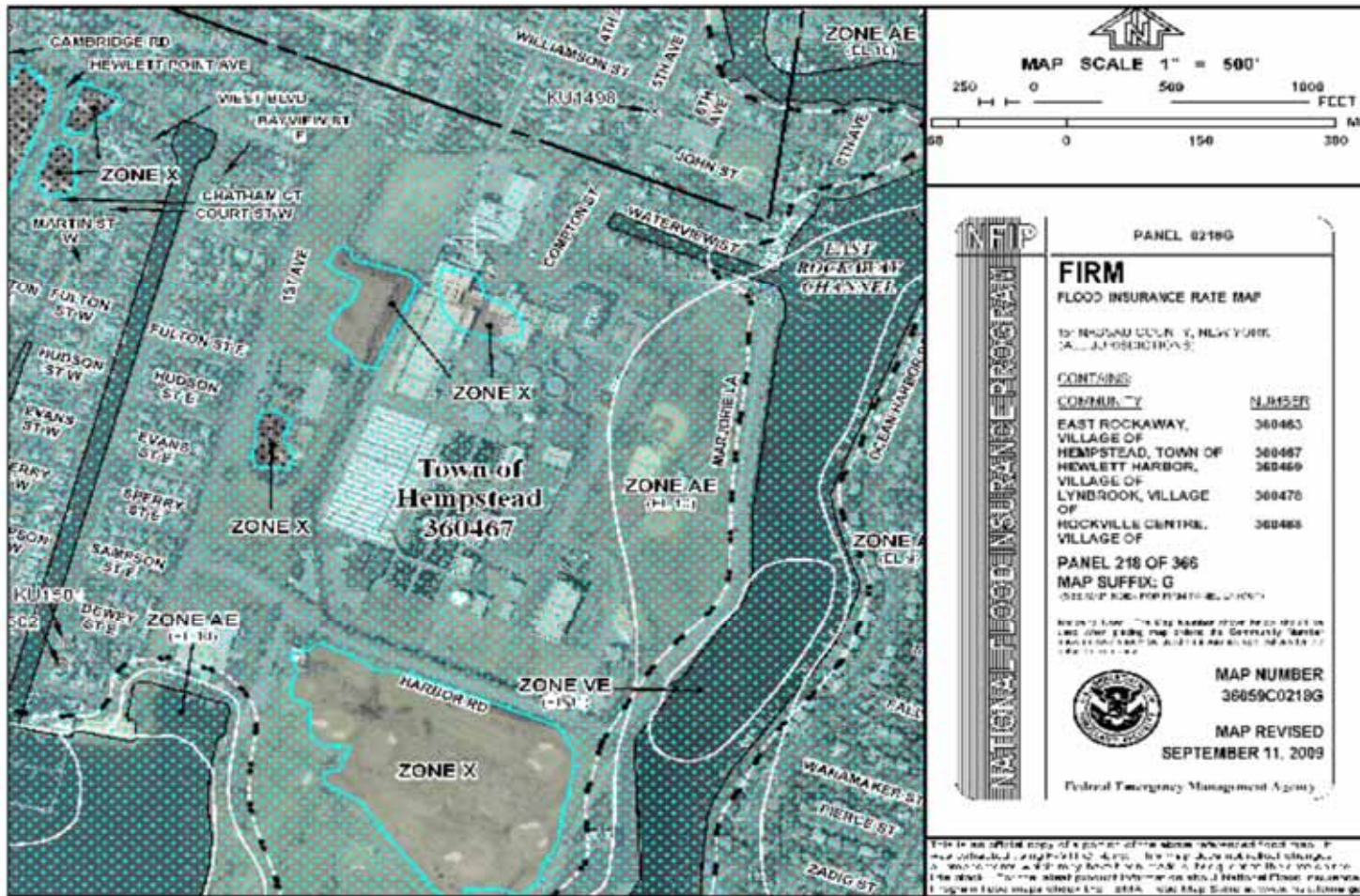
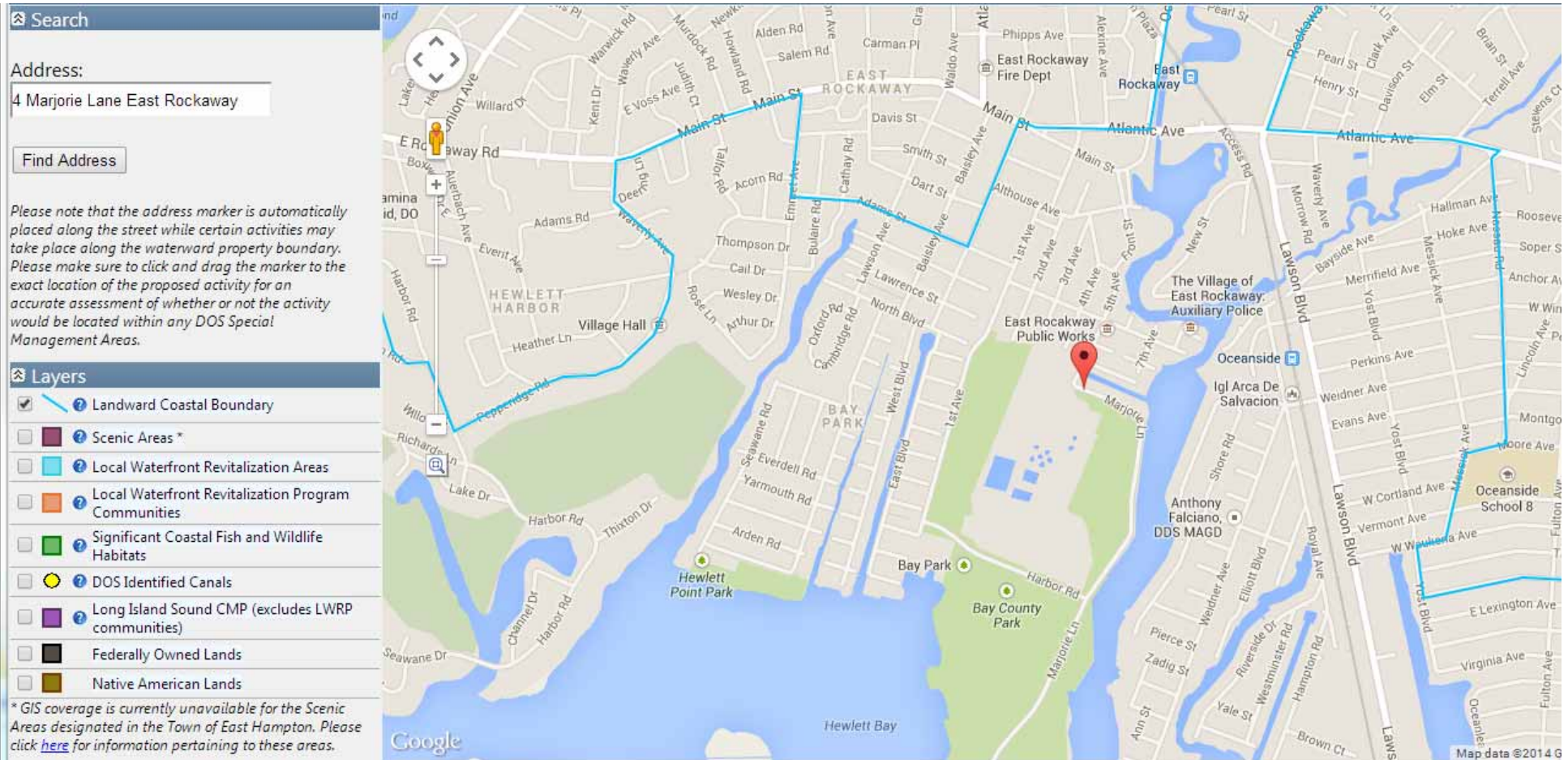


FIGURE G
FLOOD INSURANCE RATE MAP



DATE: MAY 2014



Source: NYS DOS Communities & Waterfronts http://appext20.dos.ny.gov/coastal_map_public/map.aspx

FIGURE H
REGULATED COASTAL ZONE



DATE: MAY 2014

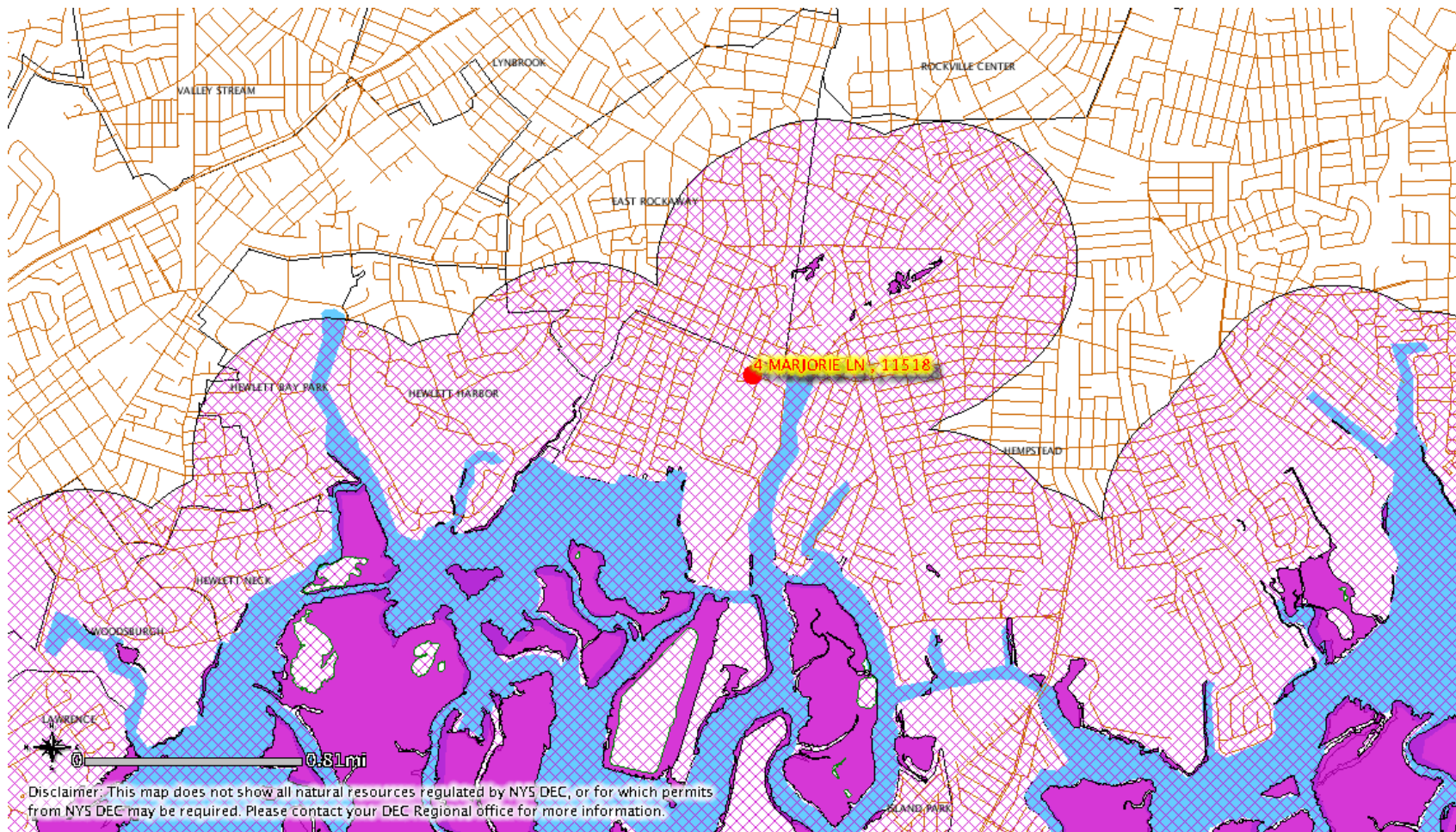
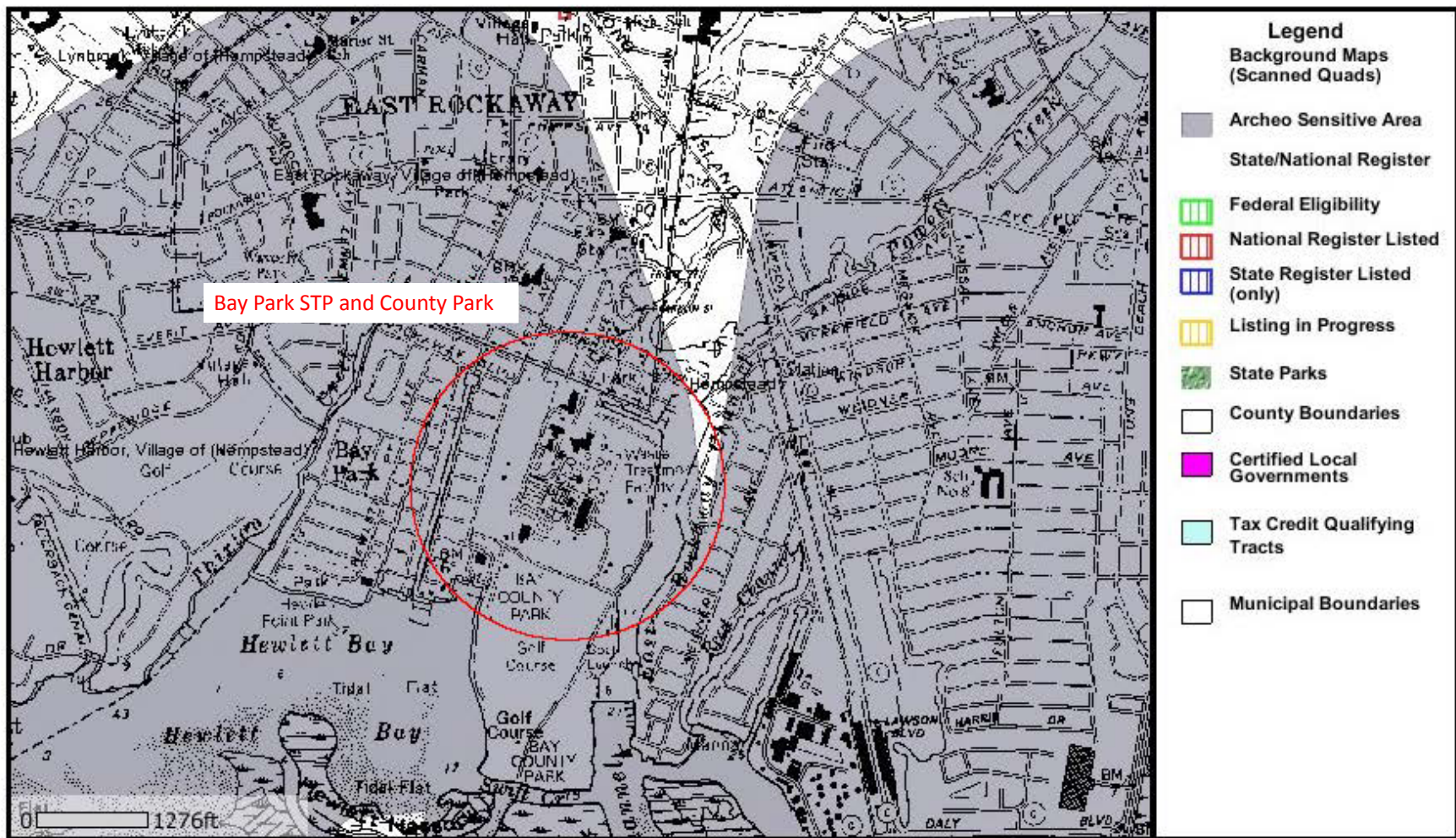


FIGURE I
SIGNIFICANT NATURAL COMMUNITIES AND NATURAL
COMMUNITIES VICINITY MAP





Disclaimer: This map was prepared by the New York State Parks, Recreation and Historic Preservation National Register Listing Internet Application. The information was compiled using the most current data available. It is deemed accurate, but is not guaranteed.

FIGURE J
NY STATE HISTORIC PRESERVATION OFFICE (SHPO)
ARCHAEOLOGICAL SITES



DATE: MAY 2014



FIGURE K
LAND USE MAP





FIGURE L
MAP LOCATION OF RHAME AVENUE ELEMENTARY SCHOOL



FIGURE M
MAP WITH STREET NAMES IN VICINITY OF BAY PARK STP



DEPARTMENT OF ENVIRONMENTAL CONSERVATION



Bulk Storage Database Search Details

Facility Information

Site No.: 1-000236
Status: Active
Expiration Date: 07/25/2015
Site Type: CBS
Site Name: BAY PARK SEWAGE TREATMENT PLANT
Address: 2 MARJORIE LANE
Locality: EAST ROCKAWAY
State: NY
Zipcode: 11518
County: NASSAU

Owner(s) Information

Facility Owner: COUNTY OF NASSAU, D.P.W.
 1194 PROSPECT AVE . WESTBURY, NY. 11590-2723

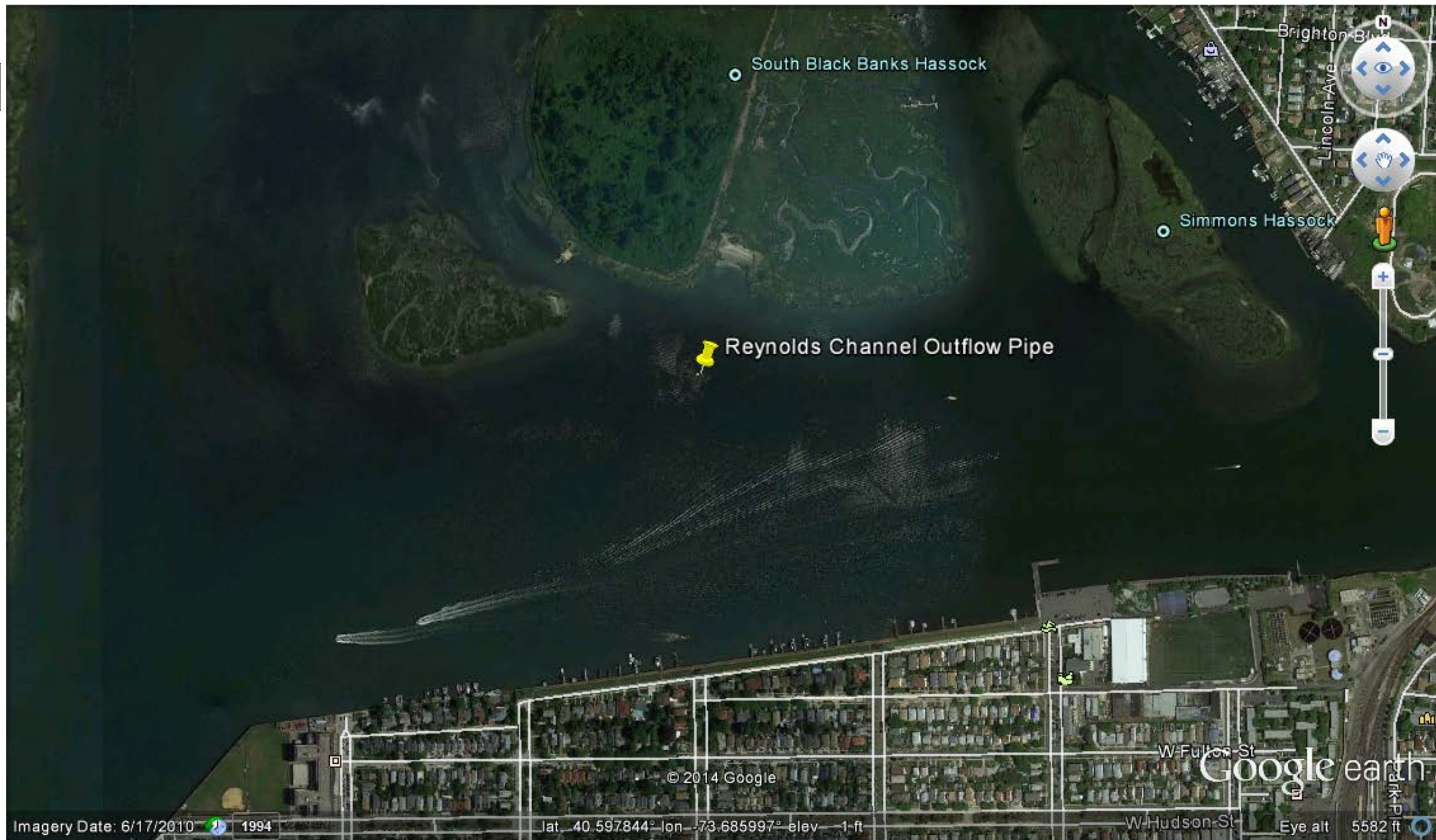
Tank Information

*Tank Information withheld (not releaseable under Freedom of Information Law)
 in accordance with Public Officers Law Sections 86.5, 87.2(f), 89.5(a)(1)(1-a)*

Source: NYS DEC Bulk Storage Database Search Details <http://www.dec.ny.gov/cfm/extapps/derexternal/abs/details.cfm>



FIGURE N
BULK STORAGE REGISTRATION



Source: Google Earth



FIGURE O
Reynolds Channel Outflow Pipe Location