

Nassau County Department of Public Works

Beech Street / Park Street Complete Streets and Drainage Improvements

Pre-Proposal Conference and
Networking Session



Welcome

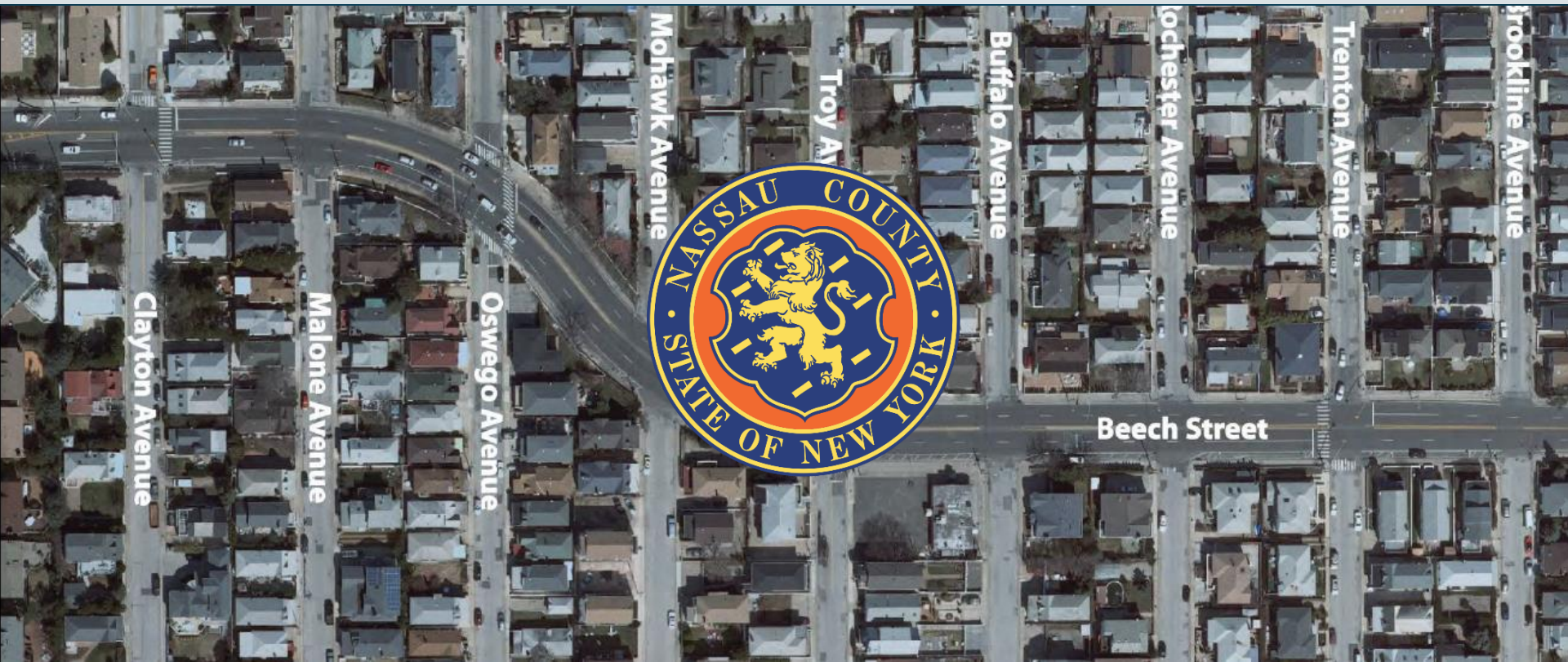
Introductions

- Dr. Phillip Elliot, Deputy County Executive, Nassau County of Minority Affairs
- Sean Sallie, Planning Division Supervisor, Nassau County DPW
- Nancy Lesakowski, Senior Advisor, 3PL Consulting
- Eric Boehning, Project Manager, 3PL Consulting

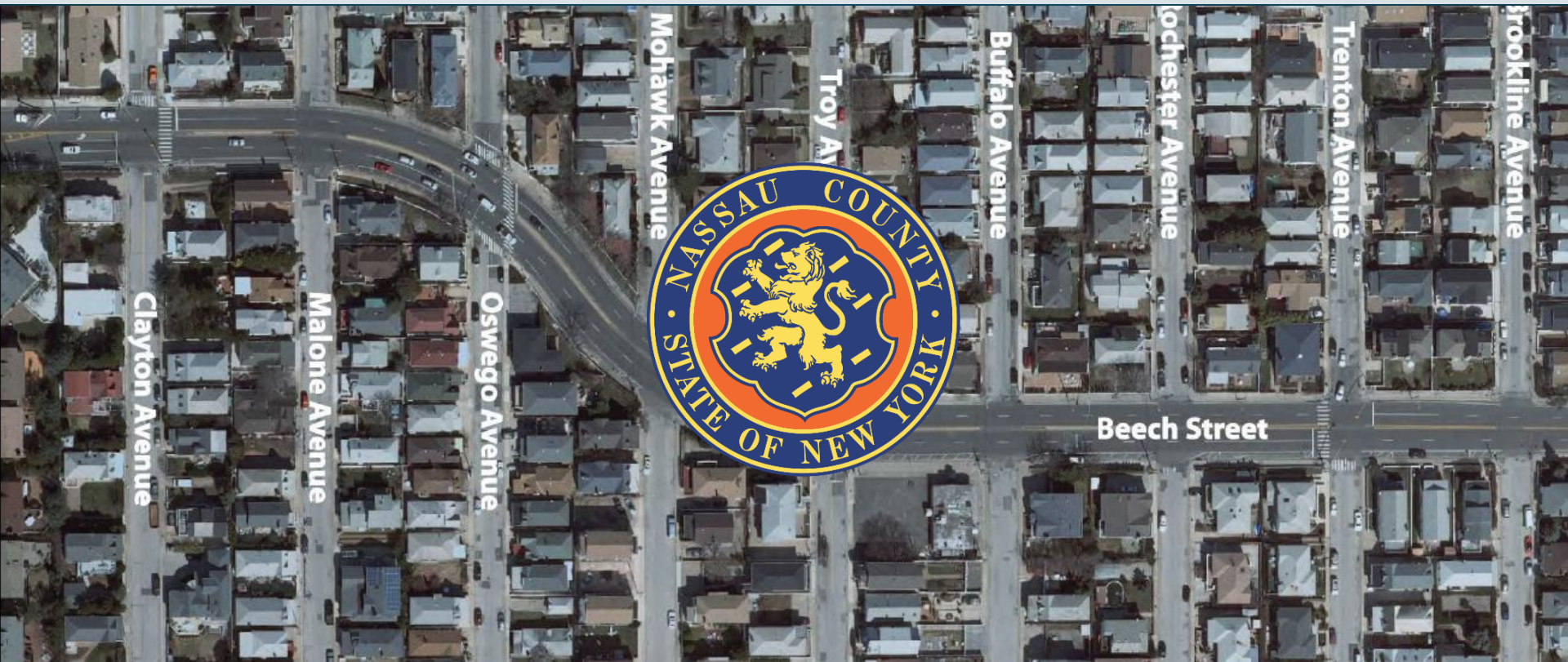
Meeting Overview

- Sign-in sheets
- Project overview
- Technical scope of work
- CDBG-DR and ESD funding requirements
- Closing Remarks
- Questions and Answers
- Networking session for MWBE and Section 3 Businesses

Dr. Phillip Elliot
Deputy County Executive
Nassau County
Office of Minority Affairs



Sean Sallie
Planning Division Supervisor
Nassau County
Department of Public Works



Funding Sources

NY Rising Community Reconstruction Program: CDBG-DR

- Nassau County has entered into a Community Development Block Grant - Disaster Recovery (CDBG-DR) Sub-Recipient Agreement (SRA) with the New York State Governor's Office of Storm Recovery (NYS GOSR).
- The SRA allows for the dispersal of CDBG-DR funds to the County for undertaking certain disaster recovery projects.
- One such set of projects is the Community Reconstruction (CR) Projects. CR projects were developed in collaboration with local communities to provide rebuilding and resiliency assistance.

Funding Sources (continued)

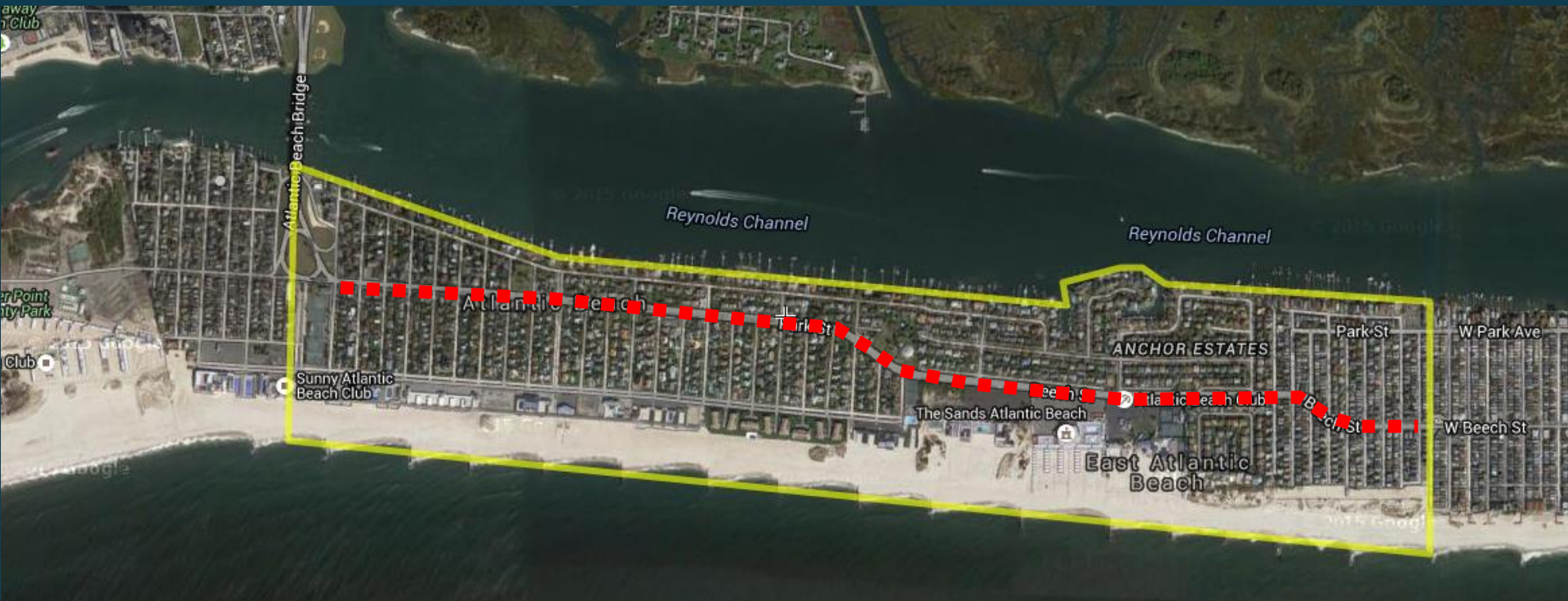
Empire State Development: Capital Projects Grant

- County awarded funding from ESD (2014 CFA)
- This program offers financial assistance for projects that promote the economic health of New York State by facilitating the creation and or retention of jobs or the increase of business activity in the State. This program offers financial assistance for projects that promote the economic health of New York State by facilitating the creation and or retention of jobs or the increase of business activity in the State.

Beech Street / Park Street Complete Streets and Drainage Improvements

- RFP was **Re-Released** 03-15-16; Due Date 04-15-16
 - **Note:** RFP originally released in October, 2015; proposals were due on November 20, 2015.
 - RFP reissue includes a more robust scope and extends the project limits west on Park Street.
- Public Outreach and Agency Coordination
- Drainage and Traffic Calming Improvements
 - Park Street from Atlantic Beach Bridge in V of Atlantic Beach to Beech Street @ Nevada Street in the Hamlet of East Atlantic Beach
 - Traffic Calming and Safety Enhancements (ref: Beech Street Traffic Calming Study, 2014)
 - Enhance mobility/connectivity through pedestrian, bicycle infrastructure improvements
 - ADA Compliance
 - Drainage improvements and Green Infrastructure for Park Street and Beech Street
- Tasks: Technical Design Report → Final Design

Study Area Limits



The study area is from Park Street at the East Atlantic Beach Bridge to Beech Street at Nevada Avenue.

Design Services

- Overview and Technical Design Report (TDR)
- Horizontal Control
- Vertical Control
- Base Map
- Detail Map
- Right-of-Way Maps
- Design Plans
- Soils Investigations and Reports
- Coordination with Public and Private Utilities
- Final Detailed Drawings and Specifications

Services During Construction

- General Construction Support
- Field Inspection Services are not included in this Agreement
- Note: Construction Management (CM) is not part of this solicitation.

Nancy Lesakowski Senior Advisor Overview of Supplementary Conditions for Contracts



Supplementary Conditions for Contracts

- Supplementary Conditions for Contracts
 - Sub-Recipient Agreement between GOSR and Nassau County
 - MWBE
 - EEO
 - Davis Bacon
 - is mentioned, but only applies to construction projects
 - Additional Civil Rights Obligations
 - Section 3

Minority and Women Business Enterprises (M/WBE) Thresholds

- Contract value
 - >\$25,000 - Labor, services, equipment, material, or any combination;
OR
 - >\$100,000 - Real property renovations and construction
- GOSR MWBE Participation Goal
 - 30% (15% MBE and 15% WBE) of the contract value
- ESD MWBE Participation Goal
 - 35% (18% MBE and 17% WBE) of the contract value
 - This requirement controls
- MWBE Utilization Plan
 - Completed form is submitted as part of the proposal

MWBE Outreach Strategies

- Outreach to MWBE subs can be accomplished by:
 - Complete a search and solicit MWBE firms on ESD's website
 - (<https://ny.newnycontracts.com/FrontEnd/VendorSearchPublic.asp?TN=ny&XID=6478>)
 - Post procurement opportunities on Architectural and Engineering (A and E) or Planning Firm's website(s)
 - Advertise on the NYS Contract Reporter <https://www.nyscr.ny.gov/>
 - MWBE's pending certification are also encouraged to bid

MWBE Outreach Strategies (continued)

- Host “Meet the Prime” vendor outreach forums
- Nassau County Office of Minority Affairs
 - Shelley Brazley
 - dsbrazley@nassaucountyny.gov
 - 1 West Street, 1st Floor, Mineola, NY 11501
 - 516-572-2240
- Reach out to local MWBE or professional organizations (LIACC, PWC, WEDLI)
 - Utilize the M/WBE list, compiled from various sources
 - MWBE list will be included in Addenda 01
 - MWBEs must be ESD certified

Equal Employment Opportunity (EEO) Thresholds

- Required for all Contracts
- Equal Employment Opportunity
 - Forms completed in Elation Systems upon contract execution

Additional Civil Rights Obligations

- Federal Fair Housing Act
- Title VI of the Civil Rights Act of 1964
- The Americans with Disabilities Act
- The Pregnancy Discrimination Act
- The Equal Pay Act of 1963
- The Age Discrimination in Employment Act of 1967
- The Genetic Information Nondiscrimination Act of 2008

Section 3 Thresholds

- 30% of total new hires should be Section 3 residents

AND

- 10% of the total dollar amount of all construction contracts should be awarded to Section 3 businesses

AND

- 3% of the total dollar amount of all non-construction contracts should be awarded to Section 3 businesses

Overview of Terms

- Section 3 Resident:
 - A public housing resident or individual who resides in the metro area or non-metropolitan county in which the Section 3 assistance is expended and who is considered to be a low to very-low income person or family house income
- Section 3 Business:
 - At least 51 percent or more of your owner's gross income meets the income guidelines of a Section 3 resident or individual
 - If 30% of your employees are Section 3 residents or individuals
 - If you do not meet either of the above, but you can provide evidence of a firm commitment to subcontract a minimum of 25% of the total dollar amount of contracts to a business that meets the criteria listed above

Overview of Terms (continued)

- If you qualify as a Section 3 Business you can self-certify on HUD's website at:

<https://portalapps.hud.gov/Sec3BusReg/BRegistry/RegisterBusiness.action>

- It is recommended that users perform due diligence before awarding contracts to firms that have self-certified on this registry by ensuring that they meet the definition of a Section 3 business concern as defined by the Department's regulations at 24 CFR 135.5

Uncapped Low Income Limits for Nassau and Suffolk Counties (FY-2015)

- Individual Low Income

- 1 \$61,050

OR

- Family Size Low Income

- 1 \$61,050
- 2 \$69,800
- 3 \$78,500
- 4 \$87,200
- 5 \$94,200
- 6 \$101,200
- 7 \$108,150
- 8 \$115,150

Section 3 Certification

Section 3 Residents

- Copy of lease
- Copy of receipt of public assistance
- Copy of evidence of participation in a public assistance program
- Or meet the income thresholds of a family of one; or family size of two to eight.
- Use the Section 3 Resident Self Certification Form
 - Included as part of Nassau County's GOSR-Approved Section 3 Plan ²³

Section 3 Certification (cont.)

Nassau County's Section 3 Plan

- Approved by GOSR in January 2015 , revised July 2015
 - Available for review:
 - Electronically on the DPW's website at:
(<http://www.nassaucountyny.gov/1865/Public-Works>)
 - Hard Copy at the Office of Minority Affairs
 - 1 West Street, Mineola, NY 11501
 - 516 572 2240

A Section 3 Business Concern is Defined as One That:

- Is 51% or more owned by Section 3 Residents; or
- Whose permanent, full-time staff is comprised of at least 30% Section 3 Residents; or
- Has committed 25% of the dollar amount of its subcontracts to Section 3 Businesses

Section 3 Business Self Certification

- A Section 3 Business may Register for Section 3 Self Certification with the U.S. Department of Housing and Urban Development website at:
(<https://portalapps.hud.gov.gov/Sec3BusReg/BRegistry/RegisterBusiness.action>)
- It is recommended that vendors/users perform due diligence before awarding contracts to firms that have self-certified on this registry by ensuring that they meet the definition of a Section 3 business concern as defined by the Department's regulations at 24 CFR 135.5

Section 3 Outreach

- To be done for new hires by the selected firm
- In coordination with the GOSR, ESD, and Nassau County

Section 3 Outreach Strategies

The selected firm will collaborate with state and local organizations to identify Section 3 Residents and Section 3 Businesses

- New York State

- NYS Division of Employment and Workforce Solutions (<http://labor.ny.gov/dews-index.shtm>)
- GOSR's Local Workforce Opportunities portal (<https://www.nystormrecoveryopps.com/>)
 - Has a Section 3 Database
 - Requires use of signed Confidentiality and Non-Disclosure Certificate
- GOSR's monthly Section 3 Information Events
- NY Department of Labor (<http://www.labor.ny.gov/home/businesses.php>)

Section 3 Outreach Strategies (cont.)

Nassau County

- Nassau County Section 3 Database
 - Compiled using GOSR Section 3 Outreach Events in the Community and at Nassau County's Department of Social Services (NC DSS)
 - Requires use of signed Confidentiality and Non-Disclosure Certificate
 - Contact Sean Sallie for Access to this database

Section 3 Outreach Strategies (cont.)

Nassau County

- Nassau County Department of Social Services (DSS)
- Nassau County Job Development Center
- Nassau County Community College
- Nassau County United Way
 - YouthBuild Program
- Nassau County Housing Authorities

Section 3 Outreach Strategies (cont.)

Post notices of available positions at venues near the job site where workers are likely to gather

- Train Stations
- Laundromats
- Libraries
- Grocery Markets
- Places of Worship
- Home Depot and/or Lowes

Section 3 Reporting

- Subrecipient and selected Firm Report Quarterly from Elation Systems:
 - Section 3 Workforce, a.k.a. New Hire Report
 - Section 3 Subcontracting, a.k.a. Project Summary Report
 - HUD Form 60002
- All firms and sub-consultants involved in these projects will be required to:
 - Input information into Elation Systems on a weekly, monthly basis and/or quarterly basis as determined by each required form

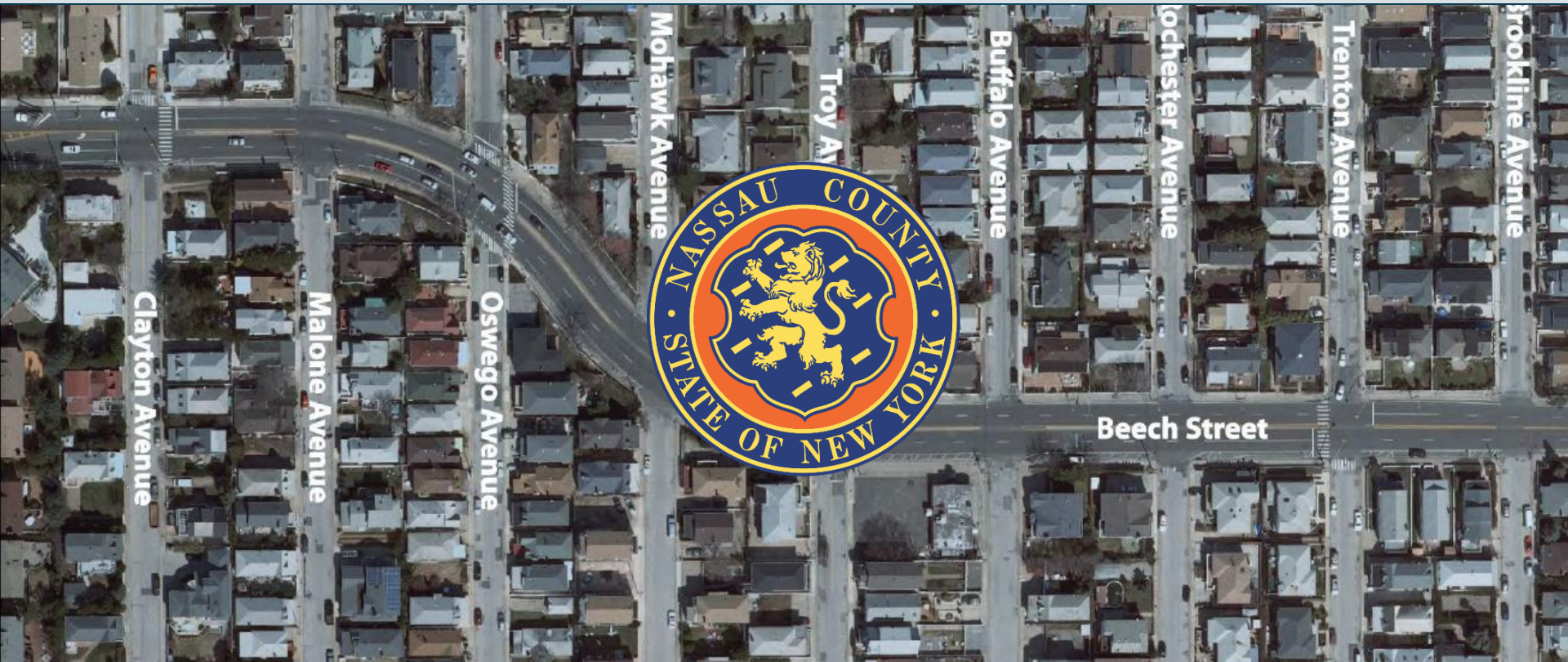
Reporting Requirements

- M/WBE Utilization Plan
 - Required to be submitted with proposal
- Elation Systems, Inc.
 - GOSR-adopted web-based compliance management System for MWBE, Davis Bacon and Section 3 reporting requirements
 - GOSR requires all parties receiving federal funds through GOSR programs to use the Elation Systems application to make reporting requirements easier, faster and simpler to complete
 - All Firms and their subcontractors involved in these projects must register with Elation Systems and attend an online training session on the use of this tool.

Eric Boehning Project Manager Closing Remarks



Questions and Answers



Networking

