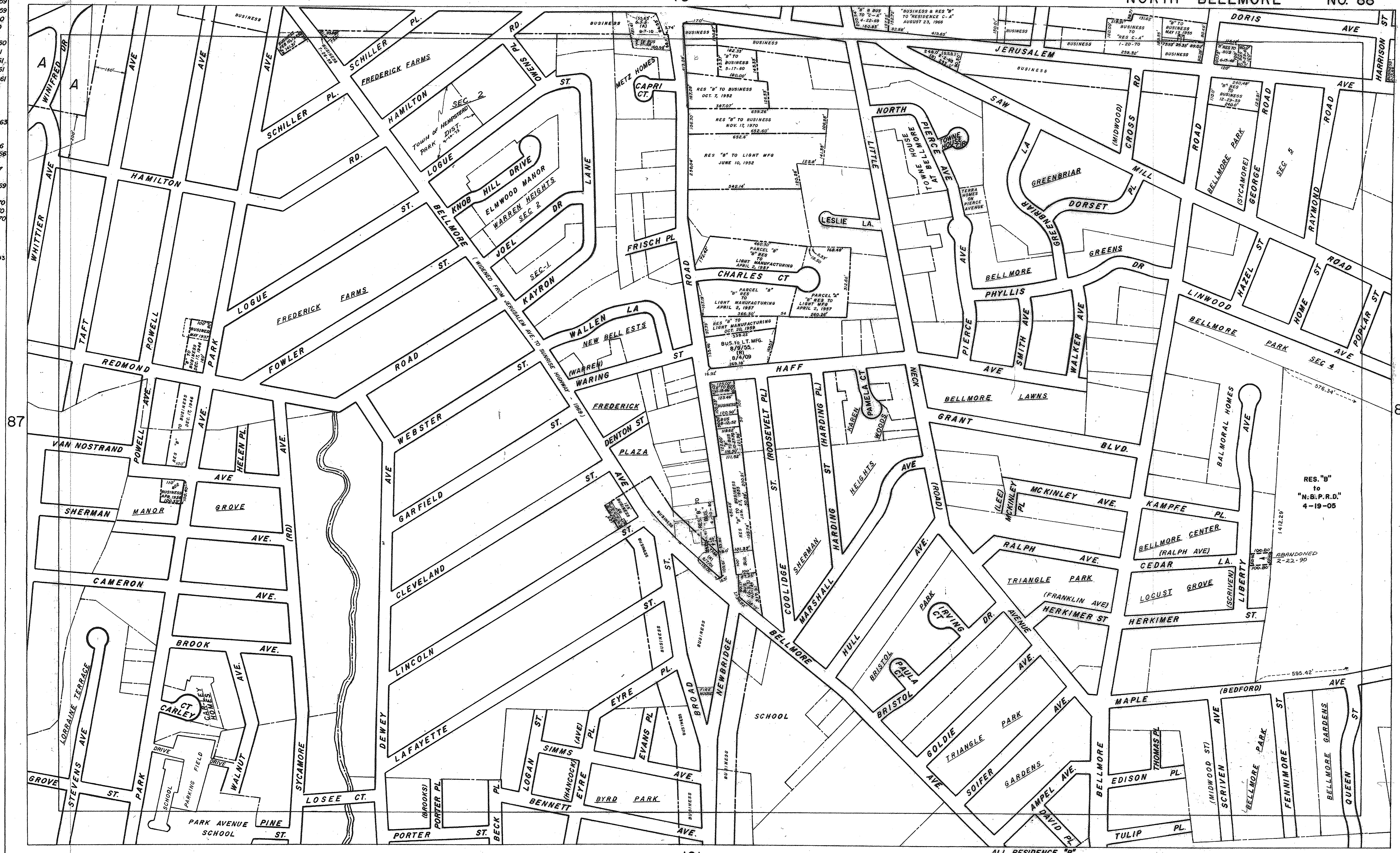


APRIL 28, 1959
 AMENDED MAY 13, 1959
 NOVEMBER 4, 1959
 DECEMBER 14, 1959
 JANUARY 5, 1960
 APRIL 22, 1960
 MAY 19, 1960
 NOVEMBER 7, 1960
 JANUARY 5, 1961
 JANUARY 13, 1961
 JANUARY 16, 1961
 FEBRUARY 27, 1961
 MARCH 24, 1961
 MARCH 25, 1961
 APRIL 5, 1961
 JULY 11, 1962
 DECEMBER 16, 1963
 MAY 7, 1964
 JUNE 7, 1966
 AUGUST 23, 1966
 NOVEMBER 15, 1966
 MAY 9, 1967
 AUGUST 17, 1967
 MAY 21, 1968
 JANUARY 30, 1969
 APRIL 22, 1969
 JANUARY 20, 1970
 OCTOBER 27, 1970
 NOVEMBER 17, 1970
 MAY 19, 1972
 JUNE 10, 1980
 APRIL 11, 1989
 FEB. 22, 1990
 JULY 21, 1992
 FEBRUARY 2, 1993
 AUGUST 7, 2001
 FEBRUARY 5, 2002
 APRIL 19, 2003
 AUGUST 4, 2009
 SEPTEMBER 7, 2010



2-15-92
 REDRAWN BY R.Z.
 CHECKED BY R. Z.

ALL RESIDENCE "B" EXCEPT AS OTHERWISE NOTED PREPARED BY HEMPSTEAD PLANNING BOARD

THE OFFICIAL TOWN OF HEMPSTEAD ZONING MAP WAS ESTABLISHED AND ADOPTED IN 1929 BY THE TOWN OF HEMPSTEAD ZONING COMMISSION AND PLANNING BOARD. THIS SHEET MAY NOT ACCURATELY REFLECT HIGHWAY ACQUISITION AND PROPERTY ALIGNMENT AND MAY BE SUBJECT TO ANY STATEMENT OF FACT AN ACCURATE SURVEY MIGHT REVEAL.

THE NOTATION (R) HAS BEEN ADDED TO THE ZONING SHEETS AS OF 10/15/88, TO DENOTE THAT DECLARATION, RESTRICTIONS OR COVENANTS HAVE BEEN MADE PART OF THE REZONING. REZONINGS PRIOR TO THAT DATE ARE NOT SO DESIGNATED AND MAY OR MAY NOT HAVE CONDITIONS OR RESTRICTIONS IMPOSED ON THEIR USE. THE ACTUAL REZONING DOCUMENTS SHOULD BE EXAMINED AT THE TOWN CLERK'S OFFICE TO DETERMINE IF ANY C & R'S ENCUMBER THE USE OF APPLICABLE PROPERTY.