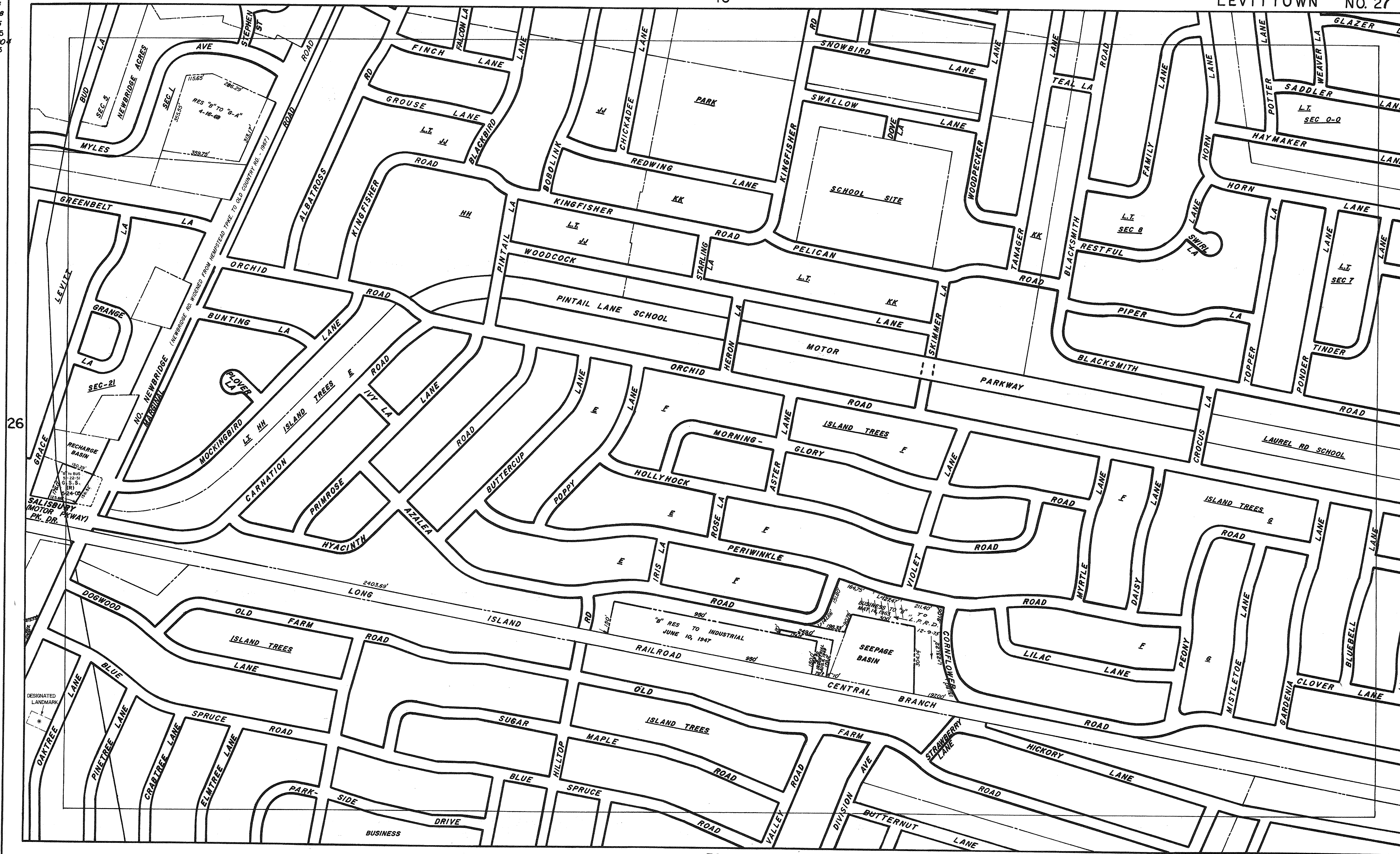


AMENDED APRIL 28, 1955
 JUNE 22, 1960
 JUNE 3, 1963
 APRIL 16, 1968
 L.P.R.D. - DEC. 9, 1975
 OCT. 17, 1995
 JAN. 23, 2000
 MAY 24, 2005



DATE, OCTOBER 1972
 DRAWN BY R.Z.
 CHECKED BY R.Y.

THE OFFICIAL TOWN OF HEMPSTEAD ZONING MAP WAS ESTABLISHED AND ADOPTED IN 1929 BY THE TOWN OF HEMPSTEAD ZONING COMMISSION AND PLANNING BOARD. THIS SHEET MAY NOT ACCURATELY REFLECT HIGHWAY ACQUISITION AND PROPERTY ALIGNMENT AND MAY BE SUBJECT TO ANY STATEMENT OF FACT AN ACCURATE SURVEY MIGHT REVEAL.

THE NOTATION (R) HAS BEEN ADDED TO THE ZONING SHEETS AS OF 10/15/88, TO DENOTE THAT DECLARATION, RESTRICTIONS OR COVENANTS HAVE BEEN MADE PART OF THE REZONING. REZONINGS PRIOR TO THAT DATE ARE NOT SO DESIGNATED AND MAY OR MAY NOT HAVE CONDITIONS OR RESTRICTIONS IMPOSED ON THEIR USE. THE ACTUAL REZONING DOCUMENTS SHOULD BE EXAMINED AT THE TOWN CLERK'S OFFICE TO DETERMINE IF ANY C & R'S ENCUMBER THE USE OF APPLICABLE PROPERTY.