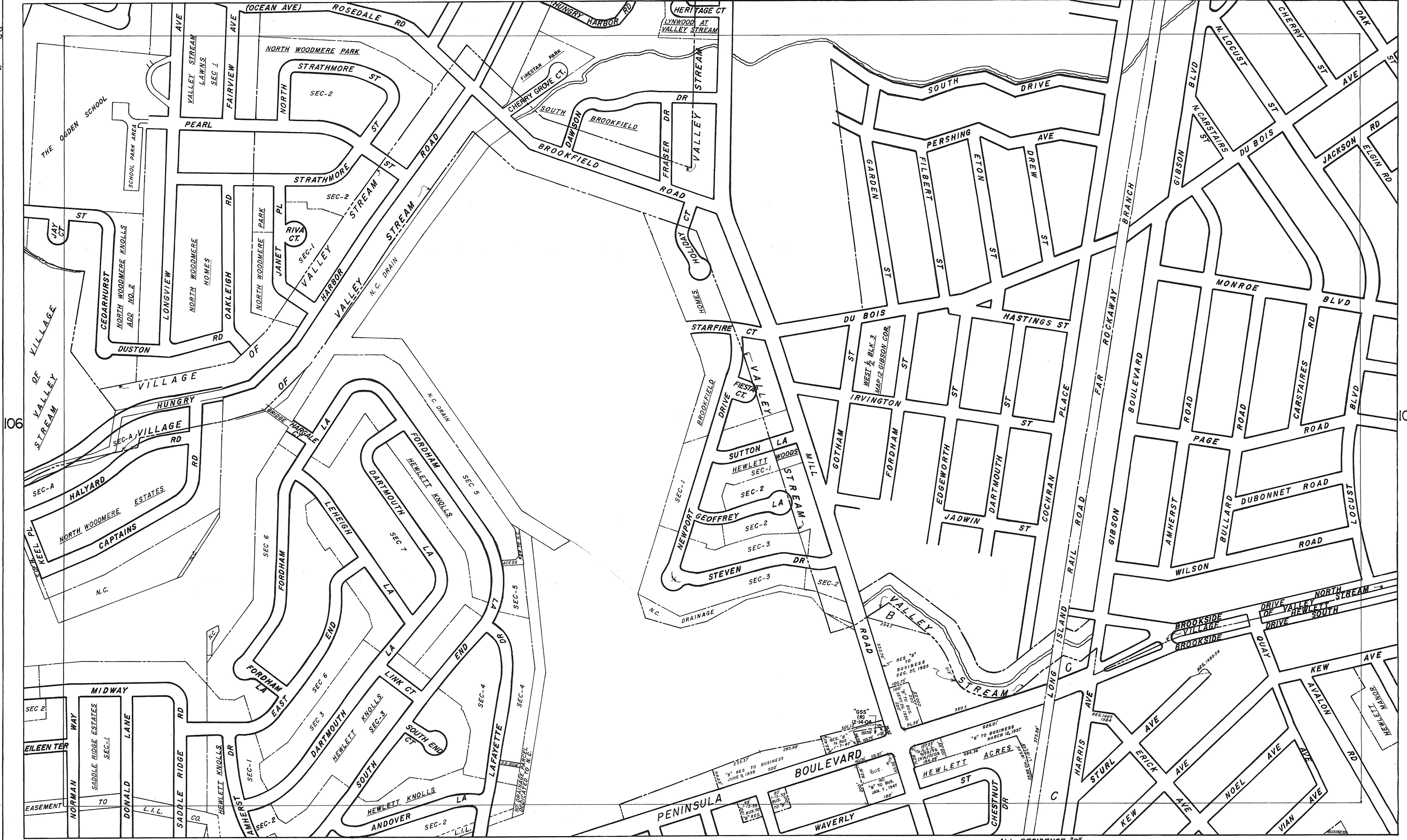


APRIL 28, 1959
 AMENDED
 JUNE 16, 1959
 AUGUST 13, 1959
 JULY 21, 1960
 SEPTEMBER 12, 1960
 SEPTEMBER 23, 1960
 APRIL 3, 1961
 MAY 21, 1963
 DECEMBER 19, 1966
 SEPTEMBER 28, 1976
 APRIL 10, 1989
 MARCH 31, 1998
 DECEMBER 14, 2004
 JUNE 17, 2008
 JUNE 5, 2012



DATE MARCH 1972
 DRAWN BY R.Z.
 CHECKED BY R.V.

ALL RESIDENCE "B"
 EXCEPT AS OTHERWISE NOTED
 PREPARED BY HEMPSTEAD PLANNING BOARD

THE NOTATION (R) HAS BEEN ADDED TO THE ZONING SHEETS AS OF 10/15/88, TO DENOTE THAT DECLARATION, RESTRICTIONS OR COVENANTS HAVE BEEN MADE PART OF THE ZONING. REZONINGS PRIOR TO THAT DATE ARE NOT SO DESIGNATED AND MAY OR MAY NOT HAVE CONDITIONS OR RESTRICTIONS IMPOSED ON THEIR USE. THE ACTUAL REZONING DOCUMENTS SHOULD BE EXAMINED AT THE TOWN CLERK'S OFFICE TO DETERMINE IF ANY C & P'S ENCUMBER THE USE OF APPLICABLE PROPERTY.

THE OFFICIAL TOWN OF HEMPSTEAD ZONING MAP WAS ESTABLISHED AND ADOPTED IN 1929 BY THE TOWN OF HEMPSTEAD ZONING COMMISSION AND PLANNING BOARD. THIS SHEET MAY NOT ACCURATELY REFLECT HIGHWAY ACQUISITION AND PROPERTY ALIGNMENT AND MAY BE SUBJECT TO ANY STATEMENT OF FACT AN ACCURATE SURVEY MIGHT REVEAL.