

Early Intervention



Early Intervention (EI) is a voluntary developmental evaluation and services program offered by New York State and administered locally by the Nassau County Department of Health Office for Children with Special Needs. The County EIP is subject to NYS regulations (see State for more information). To be eligible for EI services, children must be under 3 years of age and have a confirmed disability or established developmental delay, as defined by New York State, in one or more of the following areas of development: physical, cognitive, communication, social-emotional, and/or adaptive. Evaluations are conducted to determine eligibility. A variety of therapeutic and support services are offered to eligible infants and toddlers with disabilities and their families. If a child is found not eligible, parents can request **developmental monitoring**.

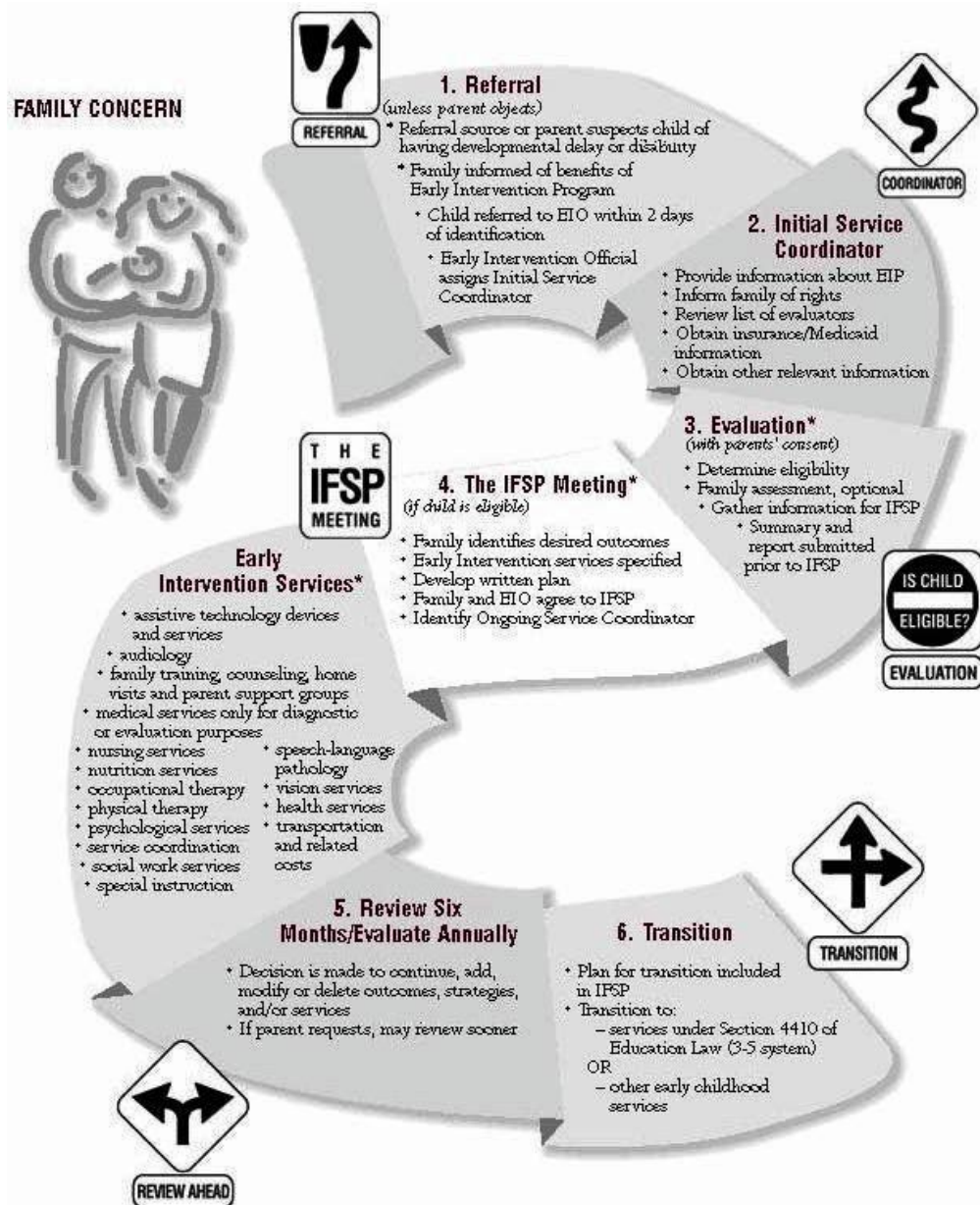
For more information call 516-227-8661.

Major provisions of the program include:

- Identification and referral of children at risk or suspected of disability by primary referral sources
- Periodic developmental screening and tracking of at risk children
- Service coordination for eligible children and families
- A multidisciplinary evaluation provided at no cost to parents to determine eligibility
- Individualized Family Service Plans (IFSPs) for eligible children and families
- Provision of early intervention services in the IFSP at no cost to parents
- Delivery of services in natural settings in the community where children of the same age are typically found, to the maximum extent appropriate



The Early Intervention Process



Baby Steps: Learn the Signs. Act Early.

Early recognition of developmental disabilities such as autism is key for parents and providers. CDC realized the impact on families and invested in a campaign to help parents measure their children's progress by monitoring how they play, learn, speak and act.

Take a few minutes to watch this video which describes how to recognize developmental milestones.

